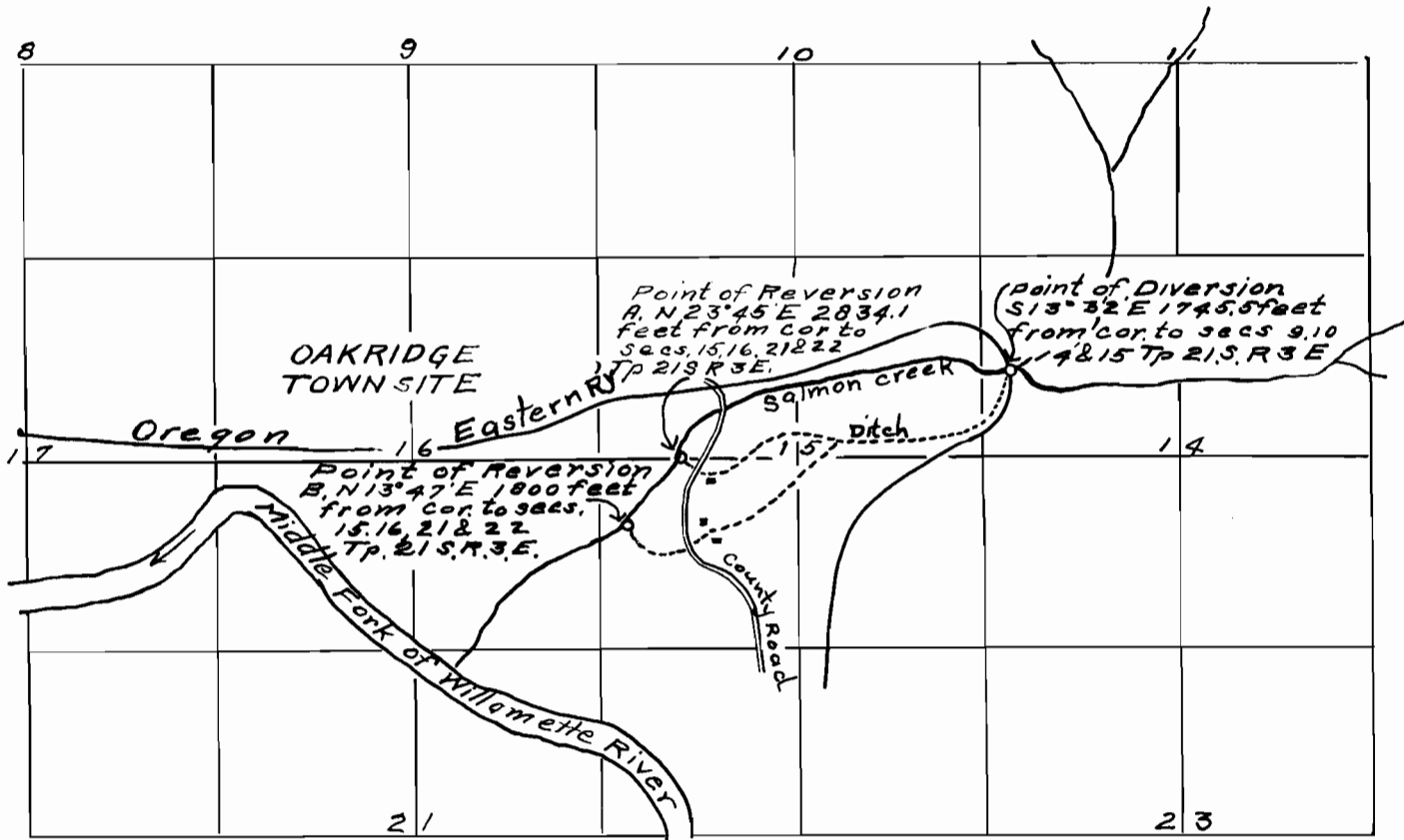


Tp. 21 S, R. 3 E.



I G. H. Waggoner, of Eugene, Oregon, hereby certify that this map was made by me from notes taken during an actual survey made by me on the 6th day of June 1924, and that it correctly represents the works described in the accompanying application together with the location of streams and other ditches in the immediate vicinity

G. H. Waggoner

Registered Professional Engineer

Oregon No 954

Date of Registration Dec 31st 1919

9627

9627  
7188