

OSBORN ROAD OR AVENUE

485.30'

H

56.70'

SANDY HIGHWAY

29.62'

195.36

E

D

Lot 7
4.7250 A

OSBORN PARK TRACT

OSBORN SPRING CREEK

365'

717.42'

Fish Pond

135'

251.46'

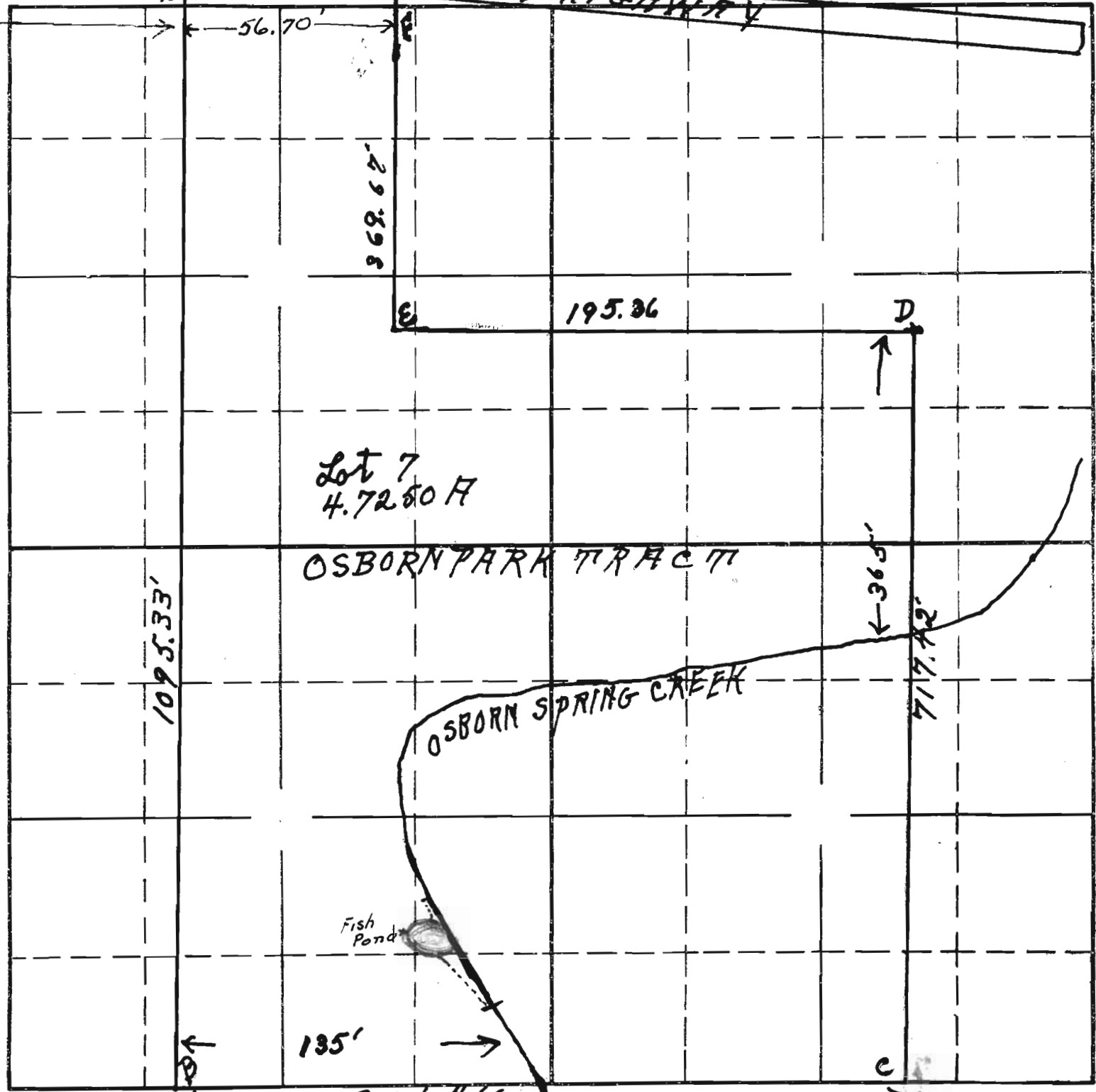
↑

→

↓

Sec 28
Lot #7
Osborn
Park
Tract
Tp. 1 N
R. 3 E

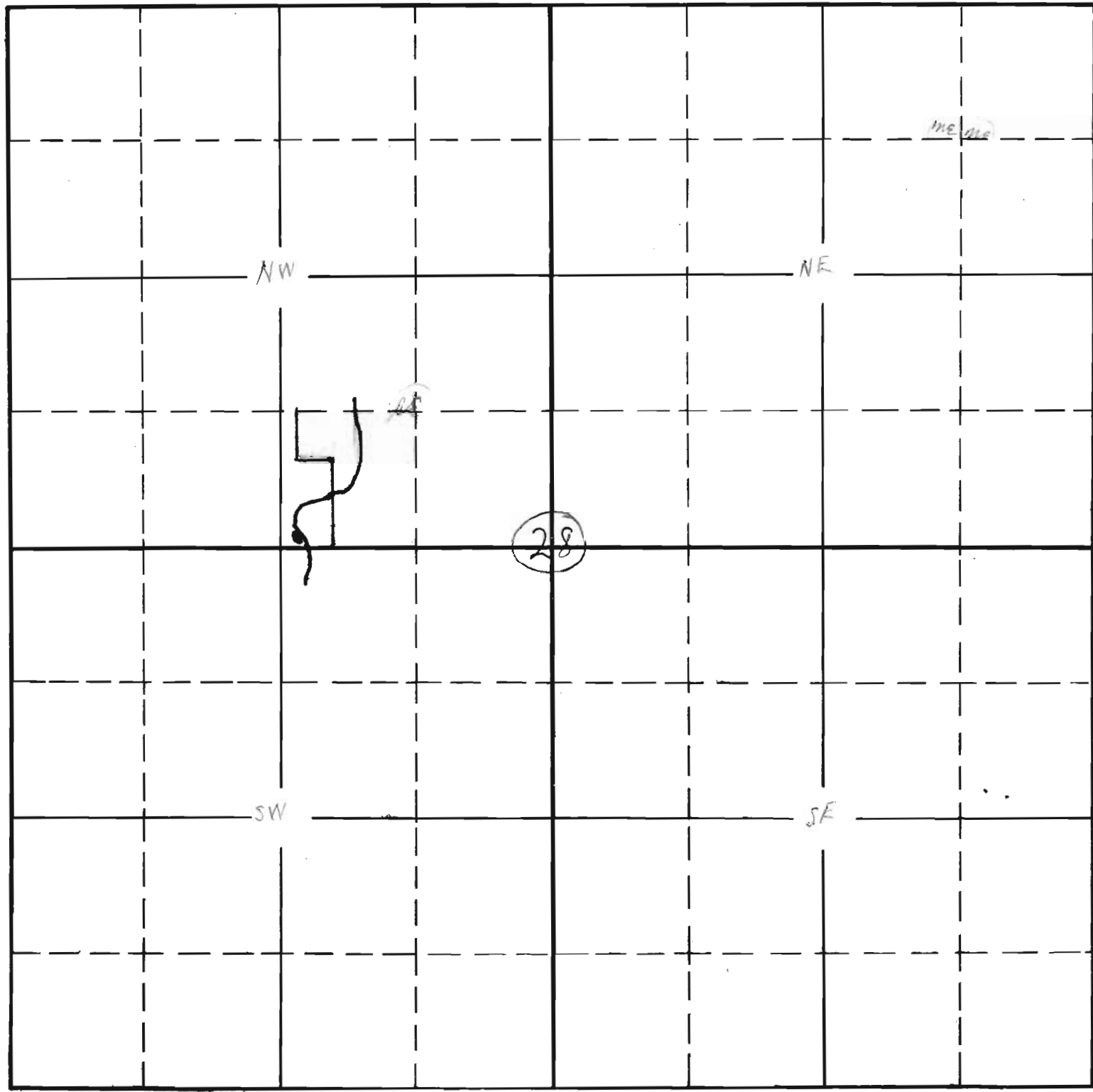
A. 10648
P. 7239



Sec. 28

Tp. 1-N

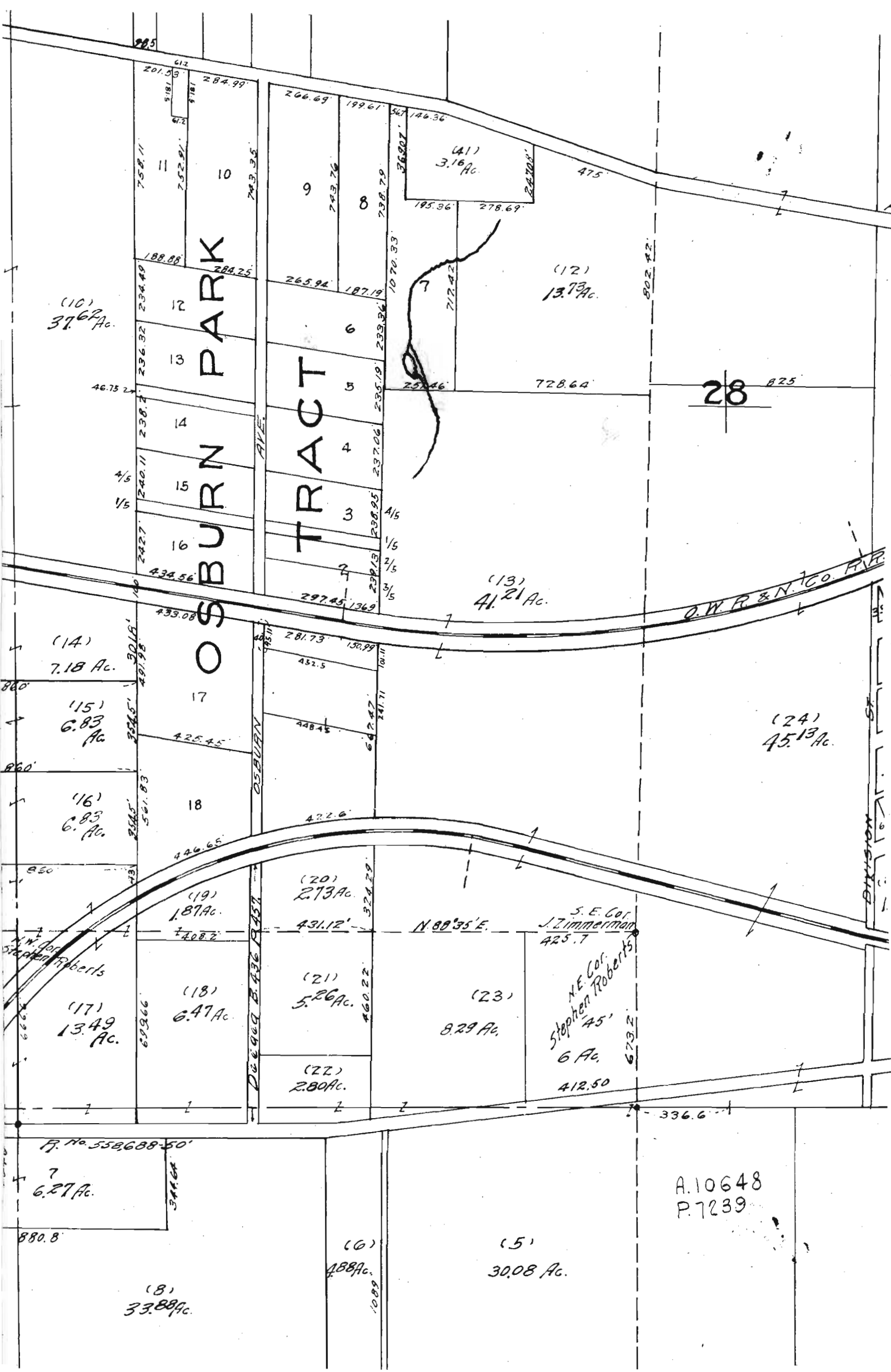
R. 3-E



A.10648
P.7239

One section = 10 acres to 1 square

OSBURN PARK TRACT



(10)
37.62 Ac.

(11)
3.16 Ac.

(12)
13.73 Ac.

(13)
41.21 Ac.

(14)
7.18 Ac.

(15)
6.83 Ac.

(16)
6.83 Ac.

(17)
13.49 Ac.

(18)
6.47 Ac.

(19)
1.87 Ac.

(21)
5.26 Ac.

(23)
8.29 Ac.

(22)
2.80 Ac.

S.E. Cor.
J. Zimmerman
425.7
N.E. Cor.
Stephen Roberts
45'
6 Ac.
412.50

P. No. 558,688-50'
7
6.27 Ac.

A.10648
P.7239

(8)
33.88 Ac.

(6)
488 Ac.

(5)
30.08 Ac.

(24)
45.13 Ac.

28

Deegan Base

OSBURN

AVE.

D.W.R. & N. CO. F.V.P.

DIVISION ST

880.8

1089

336.6

502.42

1070.33

4/5
1/5
2/5
3/5

46.75

4/5
1/5

860

860

830

666

880.8

205

612

201.05

5181

5181

612

758.11

188.88

234.49

236.32

238.2

240.11

242.7

434.56

433.08

301.5

491.98

394.5

561.83

43

693.66

408.2

446.65

431.12

460.22

324.29

324.29

460.22

460.22

460.22

460.22

460.22

460.22

460.22

460.22

460.22

460.22

460.22

460.22

460.22

460.22

460.22

460.22

460.22

460.22

460.22

460.22

460.22

460.22

460.22

460.22

460.22

460.22

460.22

460.22

460.22

460.22

460.22

460.22

460.22

460.22

460.22

460.22

460.22

460.22

460.22

460.22

460.22

460.22

460.22

460.22

460.22

460.22

460.22

460.22

460.22

460.22

460.22

460.22

460.22

460.22

460.22

460.22

460.22

460.22

460.22

460.22

460.22

460.22

460.22

460.22

460.22

460.22

460.22

460.22

460.22

460.22

460.22

460.22

460.22

460.22

460.22

460.22

460.22

460.22

460.22

460.22

460.22

460.22

460.22

460.22

460.22

460.22

460.22

460.22

460.22

460.22

460.22

460.22

460.22

460.22

460.22

460.22

460.22

460.22

460.22

460.22

460.22

460.22

460.22

460.22

460.22

460.22

460.22

460.22

460.22

460.22

460.22

460.22

460.22

460.22

460.22

460.22

460.22

460.22

460.22

460.22

460.22

460.22

460.22

460.22

460.22

460.22

460.22

460.22

460.22

460.22

460.22

460.22

460.22

460.22

460.22

460.22

460.22

460.22

460.22

460.22

460.22

460.22

460.22

460.22

460.22

460.22

460.22

460.22

460.22

460.22

460.22

460.22

460.22

460.22

460.22

460.22

460.22

460.22

460.22

460.22

460.22

460.22

460.22

460.22

460.22

460.22

460.22

460.22

460.22

460.22

460.22

460.22

460.22

460.22

460.22

460.22

460.22

460.22

460.22

460.22

460.22

460.22

460.22

460.22

460.22

460.22

460.22

460.22

460.22

460.22

460.22

460.22

460.22

460.22

460.22

460.22

460.22

460.22

460.22

460.22

460.22

460.22

460.22

460.22

460.22

460.22

460.22

460.22

460.22

460.22

460.22

460.22

460.22

460.22

460.22

460.22

460.22

460.22

460.22

460.22

460.22

460.22

460.22

460.22

460.22

460.22

460.22

460.22

460.22

460.22

460.22

460.22

460.22

460.22

460.22