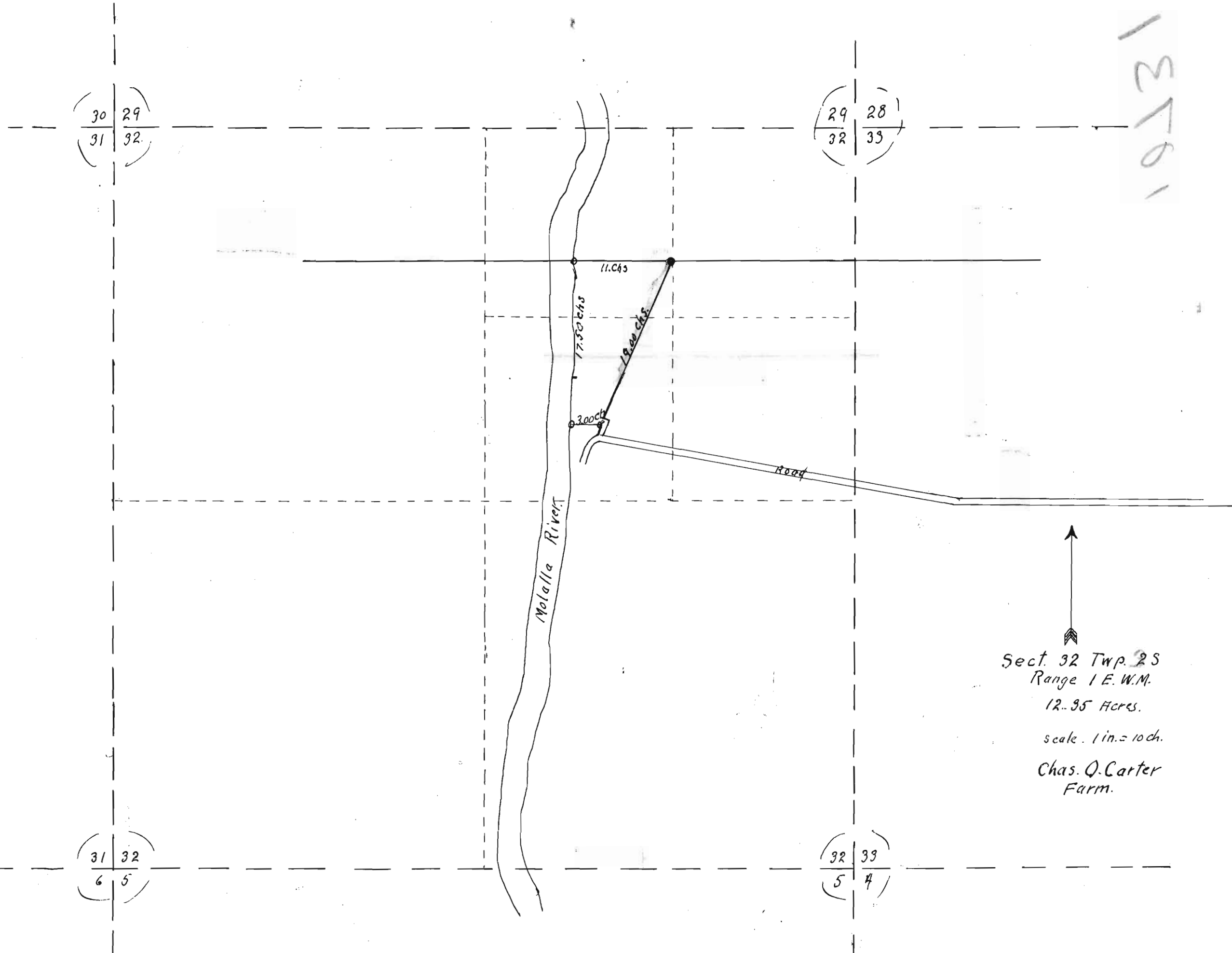


10731



↑
Sect. 32 Twp. 2S
Range 1 E. W.M.
12.35 Acres.
scale. 1 in. = 10 ch.
Chas. Q. Carter
Farm.

Application No. 10731
Permit No. 7327

10731

18561

11 Chains

17.5 Chains

Pipe Line

19 Chains

Pump

Molalla River

3 Chains

Road

NW 1/4	NE 1/4
NE 1/4	NE 1/4
SW 1/4	SE 1/4
NE 1/4	NE 1/4

Application No. 10731
Permit No. 7327



12.35 Acres
Sect. 32. TWP. 25R. 1E.
Scale 1 in = 100 ft.

10731

18561

29 28
32 33

Champing Pendleton D.L.C. No 58.

11.00 Ch.

17.50 ch.

19.00 ch.

3.00 ch.

Wesley Joselyn D.L.C. N
Twp. 2 S R 1 E
Scale 1 in. = 10 ch.

Road

Molalla River

Application No. 10731
Permit No. 7327

32 33
51 4

18704