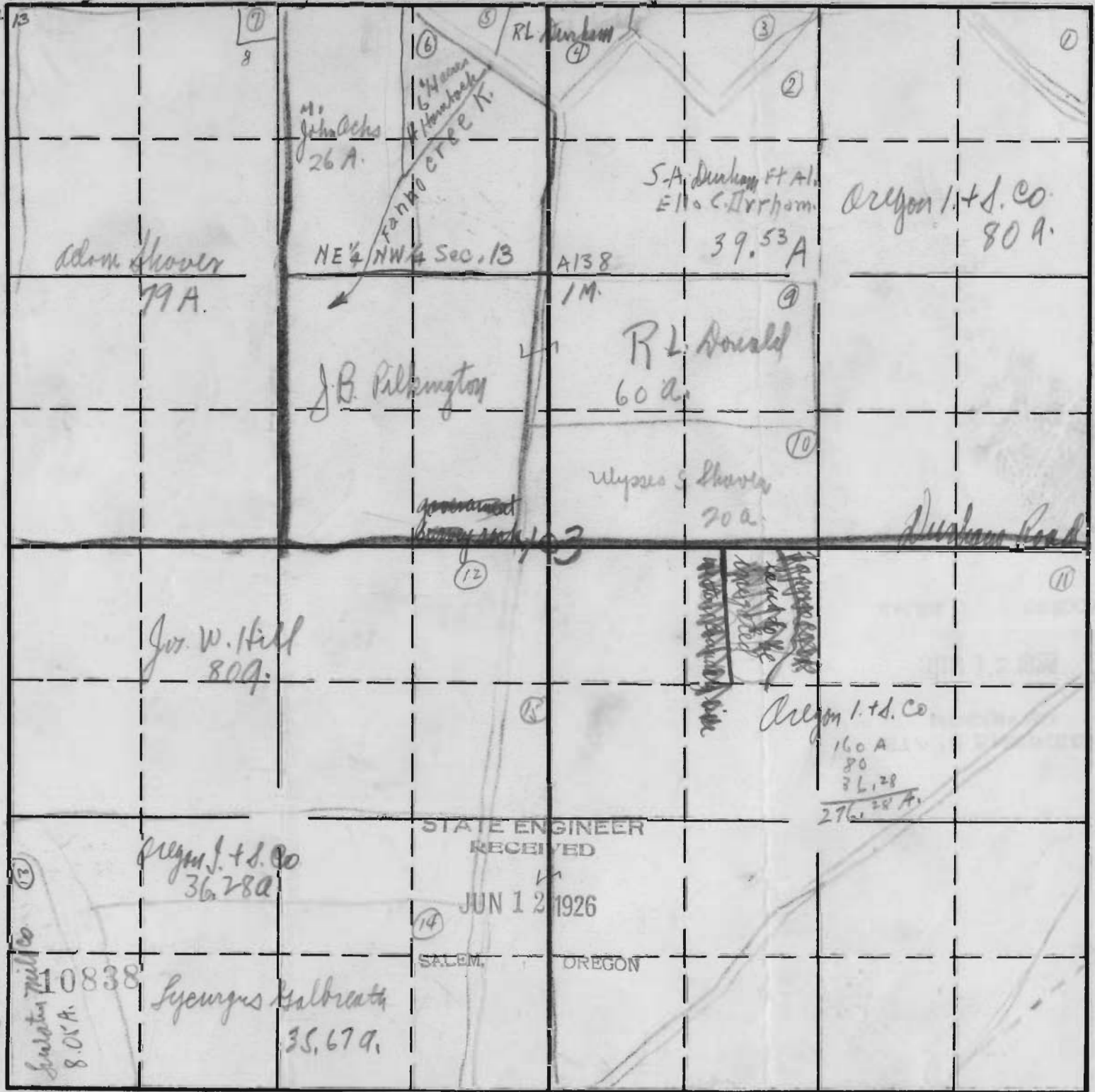


Sec. 13 11 12
14 13

North Boundary Line of Sec. 13

Sec 13



Sec. 11
12
13
14

Tr. 2

R. 1st of W.M.

STATE ENGINEER
RECEIVED
JUN 12 1926
SALEM, OREGON

Application No.
Permit No. 7417

10838
8.0 A.

Lyeurgus Kalbreath
35, 67 A.