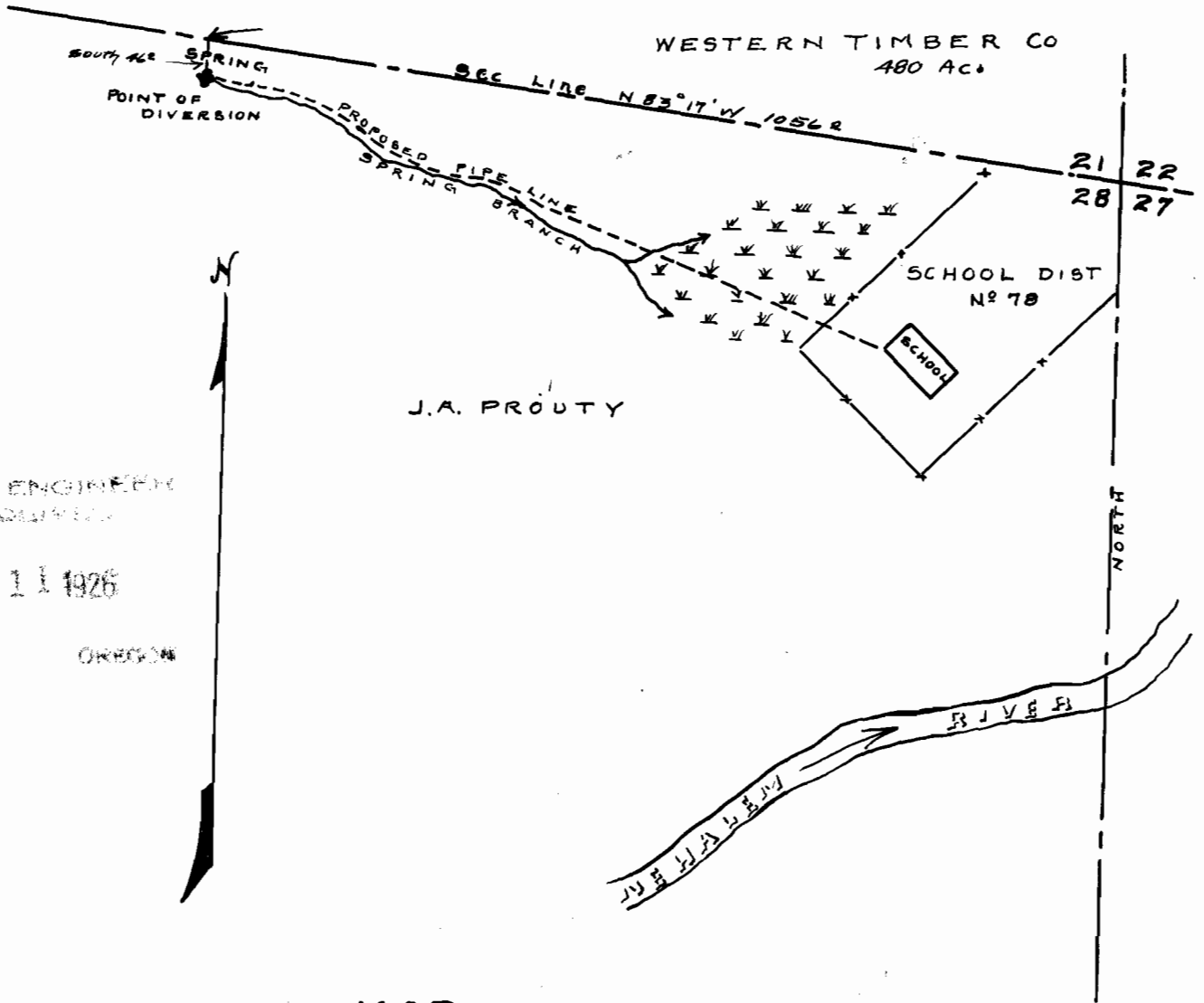


T. 3 N. R. 5 W.



STATE ENGINEER
RECEIVED

AUG 11 1926

SALEM OREGON

MAP
OF

Proposed location of point of diversion and pipe line
as described in accompanying application. Made from
measurements taken during an actual survey made
July 12 1926

Scale 1" = 200'

By E. H. Hobbs
County Surveyor
Washington County, Oregon

Application No.

11,500

Record No.

7523