

SPRING IN SEC. 22,
NW 1/4 NW 1/4 TP 3S, R. 40E, W. 1M.

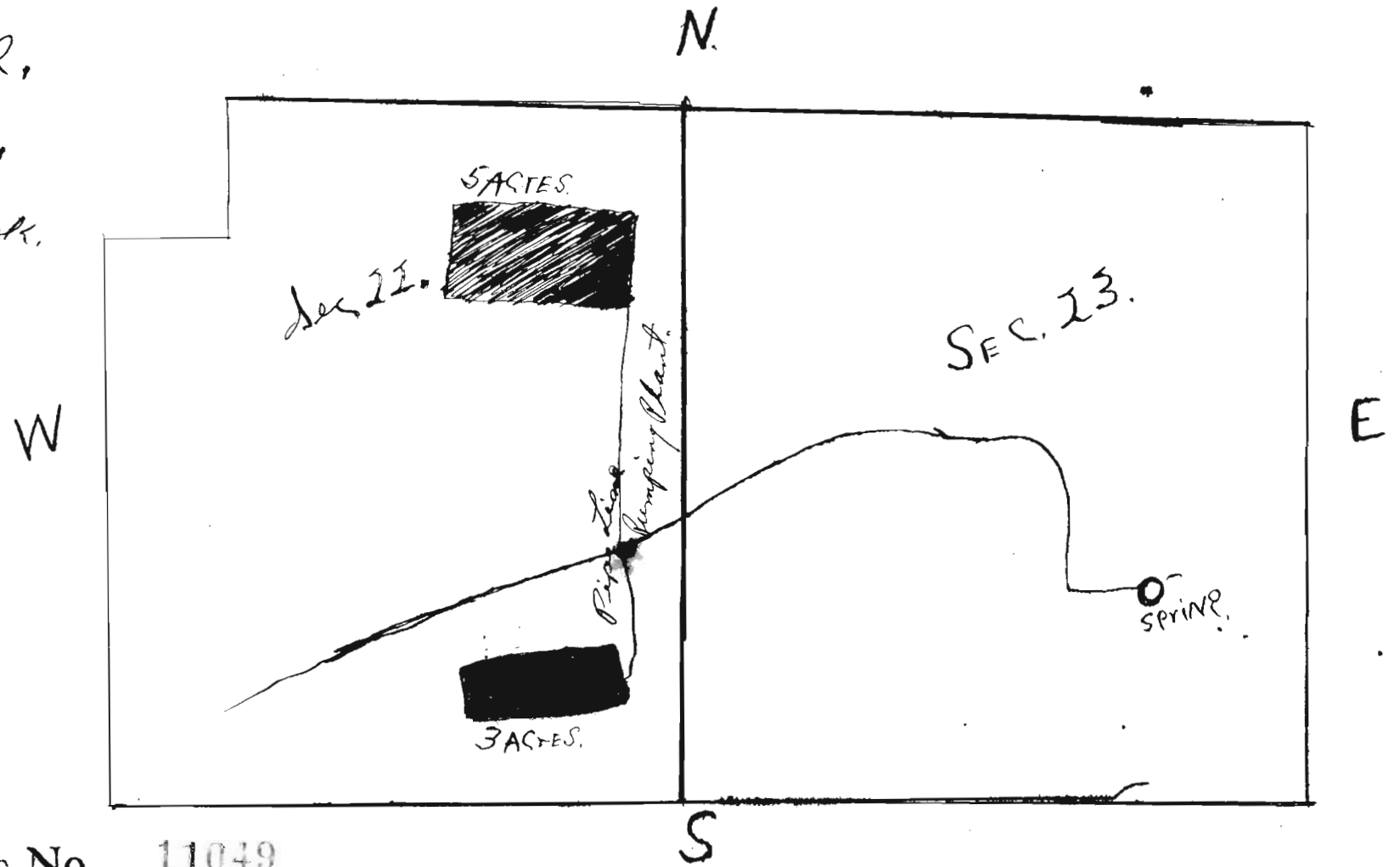
STATE ENGINEER
RECEIVED

AUG 24 1926

SALEM, OREGON

LAND TO BE IRRIGATED IN
SEC. 22,
NE 1/4 NE 1/4, TP. 3S, R. 40E, W. 1M.

S. E. Bell,
Cove, Oregon,
Sub. of Mill Creek.



Application No. 11049
Permit No. 7545