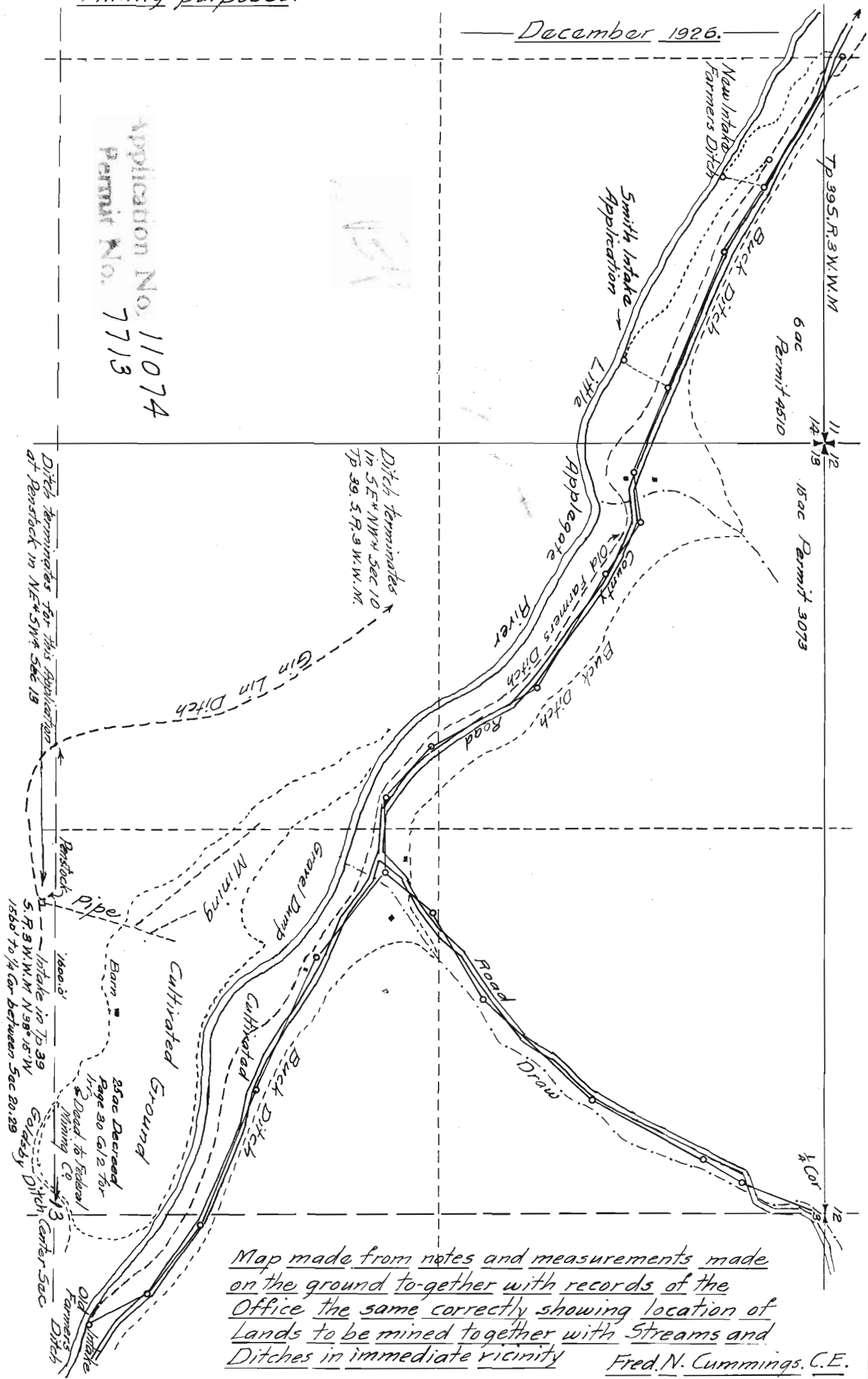


— MAP —

Accompanying application of THE FEDERAL MINING COMPANY of SALEM, MARION COUNTY, OREGON for Permit to the waters of Little Applegate River, Jackson County, Oregon for Placer Mining purposes.

— December 1926. —



Map made from notes and measurements made on the ground together with records of the Office the same correctly showing location of Lands to be mined together with Streams and Ditches in immediate vicinity Fred. N. Cummings, C.E.