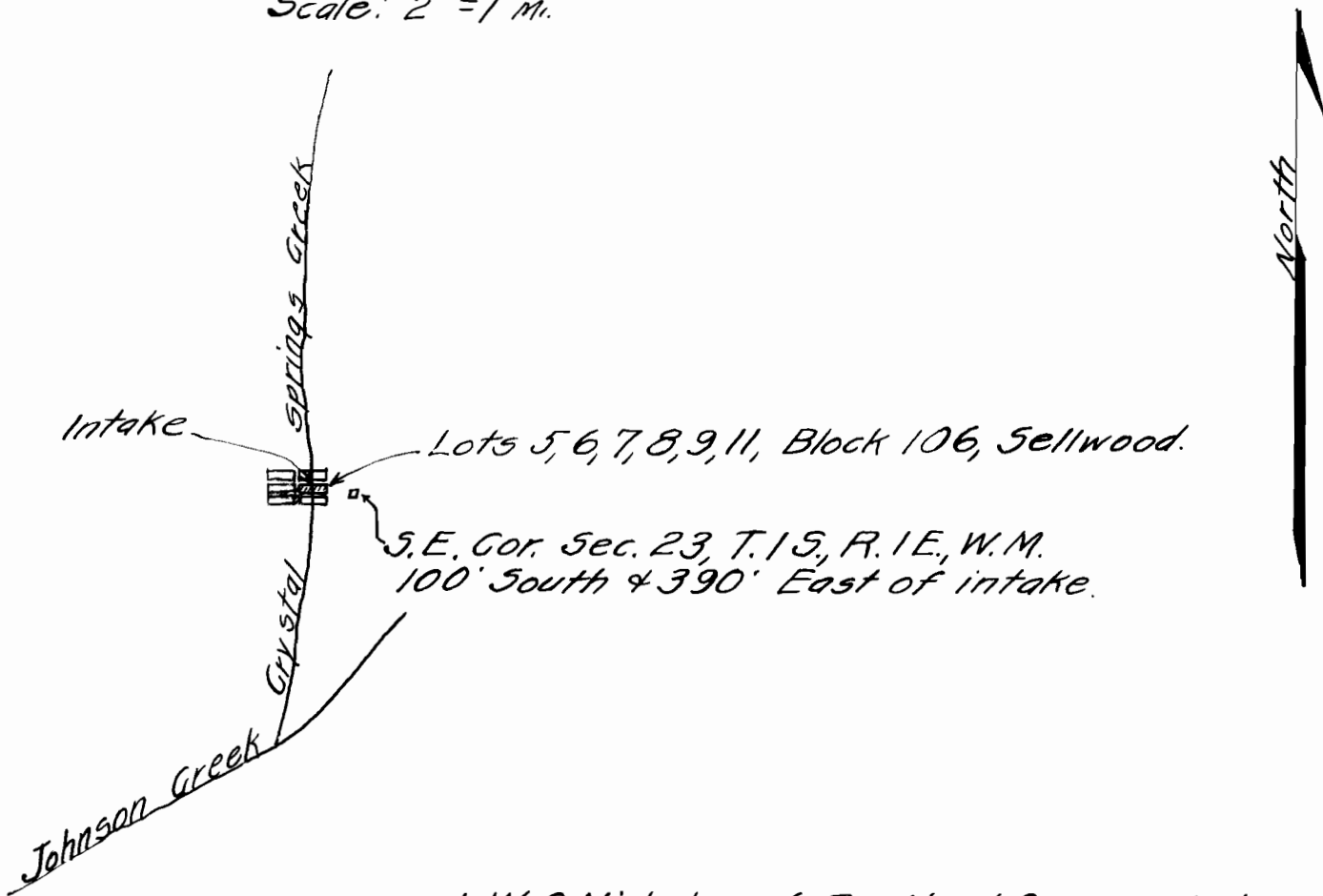


MAP ACCOMPANYING APPLICATION TO APPROPRIATE WATER.

Scale: 2" = 1 mi.



I, W.C. Nicholas, of Portland, Oregon, do hereby certify that this map correctly represents the works described in the accompanying application, together with the location of streams and other ditches in the immediate vicinity.

M. C. Nicholas

Registered Prof. Engr.

No. 153

Nov. 8, 1919.

11260

7774