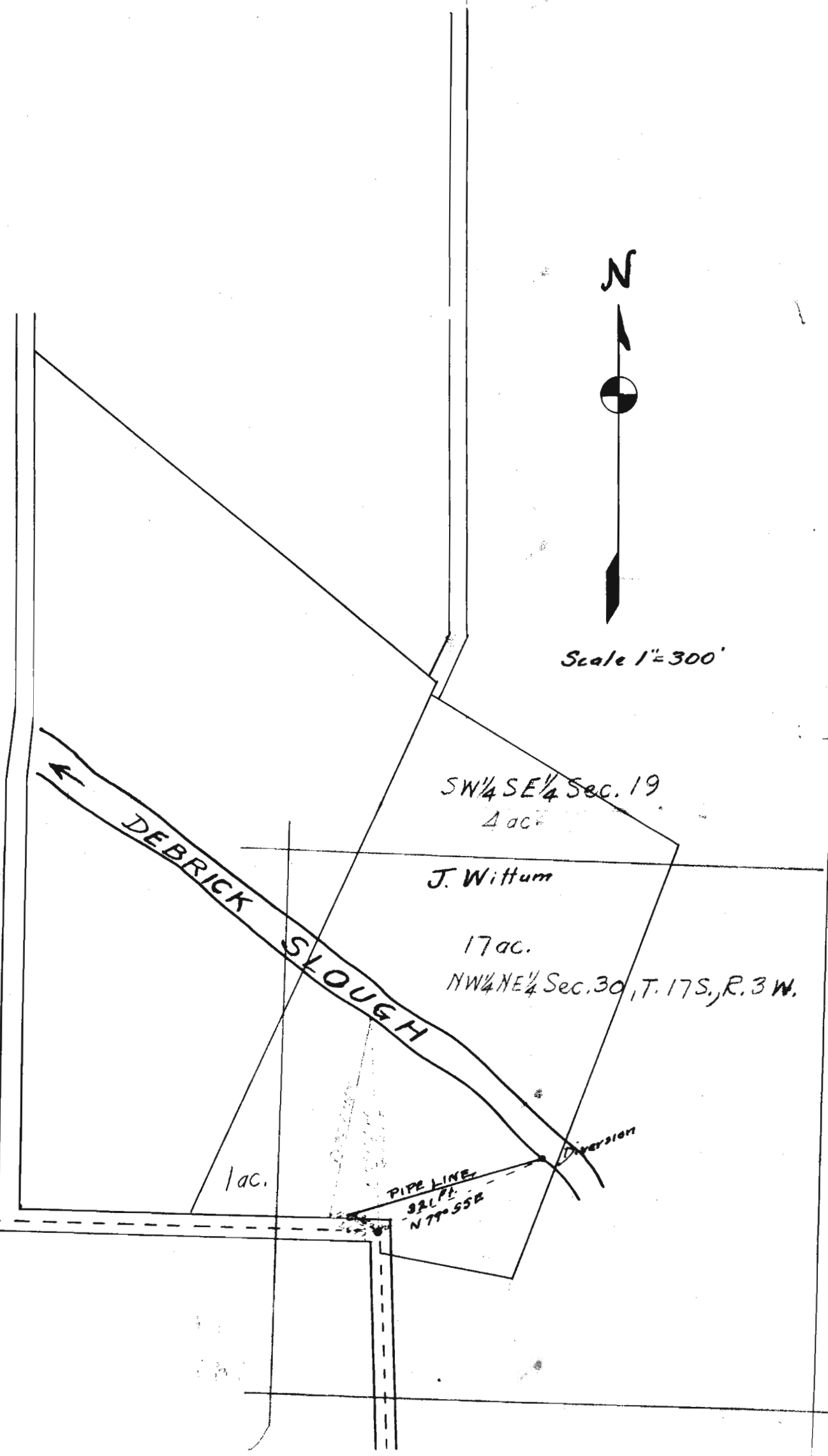


1133



SKETCH showing location of Pumping  
 Plant of J. Wittum on Debrick Slough  
 Point of Diversion  $N 79^{\circ} 55' E - 321 \text{ ft.}$  } from  
 End of Pipe Line  $N 74^{\circ} 08' W - 76 \text{ ft.}$  }  
 Corner in angle on South Line of  
 Jacob Gillespie D.L.C. No 70  
 T. 17S. R. 3W. W.M.

W.L. Seward.

Application No. 11324  
 District No. 7803