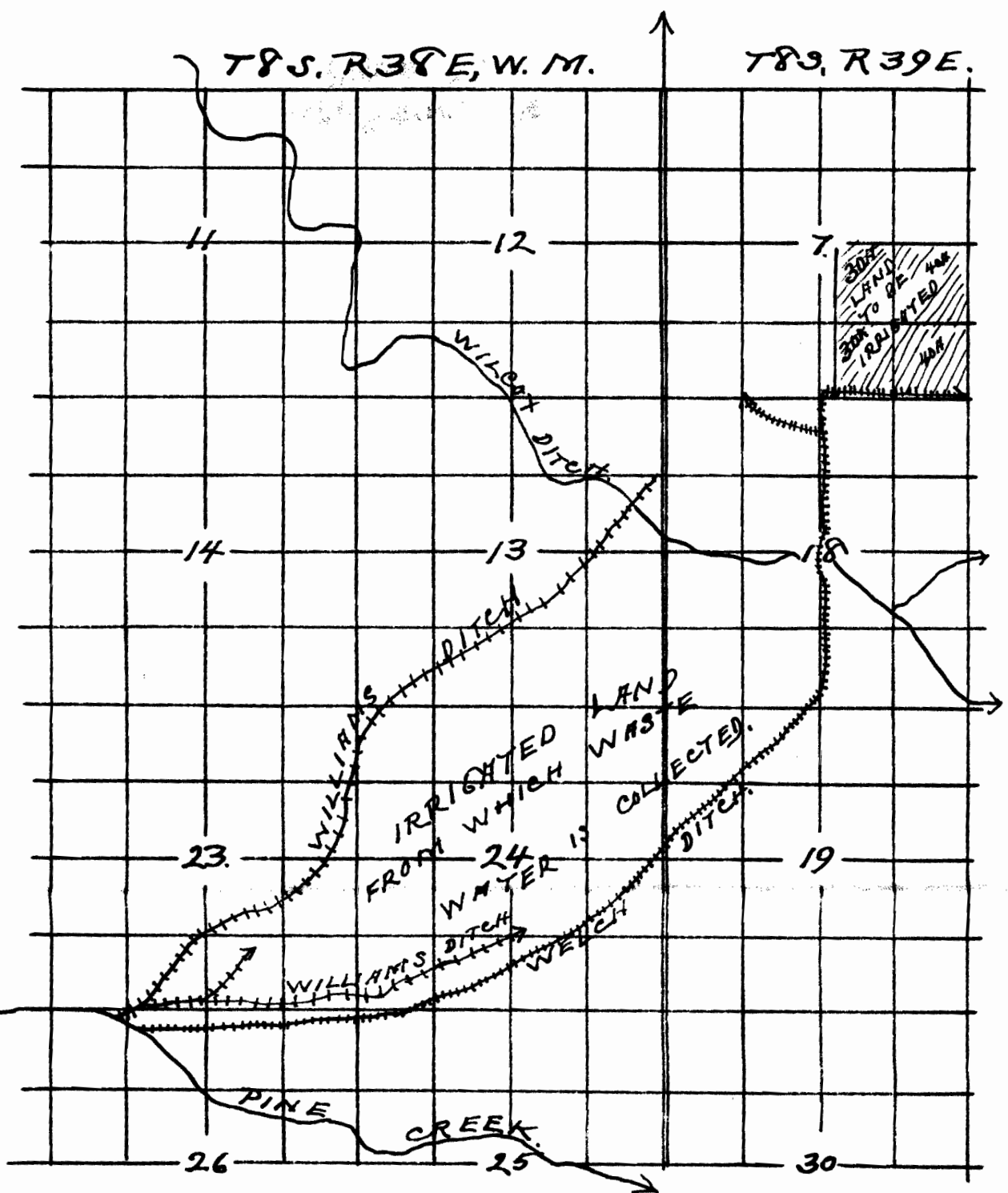


17571

N.



SKETCH

SHOWING

THE LOCATION OF LANDS
 IRRIGATED BY H.P. COLVIN
 ET AL IN SEC. 7, T8S, R39E,
 W.M., BAKER CO. OREGON.
 SCALE, ONE INCH = 40 CHS.
 DRAWN, JUNE 25, 1927.

Ira L. Hoffman
 County Surveyor.

CERTIFICATE.

I, IRA L. HOFFMAN of BAKER,
 ORE. DO HEREBY CERTIFY THAT
 THIS SKETCH WAS MADE FROM
 DATA COPIED FROM "THE POND-
 ER RIVER ADJUDICATION MAP
 AND FROM DATA FURNISHED
 BY THE APPLICANT AND THAT
 IT CORRECTLY REPRESENTS THE
 DATA SHOWN THEREON.

Ira L. Hoffman
 County Surveyor.
 REG. PROF. ENGINEER,
 ORE. N° 90, Nov. 8, 1919.

Application No. 10000

Permit No.