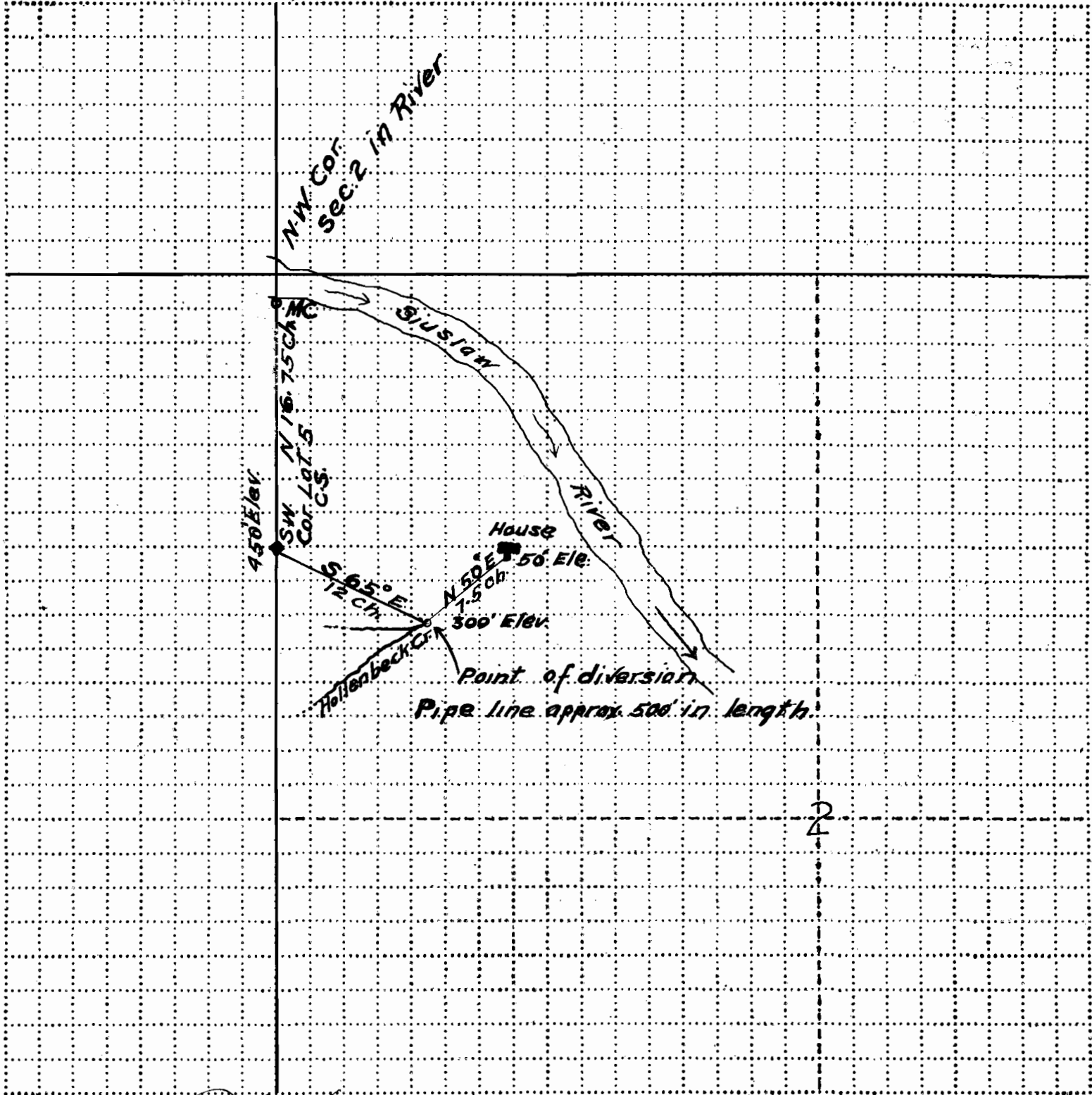


Mapleton Admin. Site (Water Supply) Land District. Mag. Declin. 22°30' Area Acres  
(Case designation) SW 1/4 NW 1/4 S. 2 T. 18 S. R. 10 W. Mer. Scale 8 inches = 1 mile  
(Subdivision and section)



Field work by E. S. Kerby Date 7/22/27 Platted by E. S. Kerby  
Remarks: \_\_\_\_\_

Approved \_\_\_\_\_, 1927

(Approving officer.)