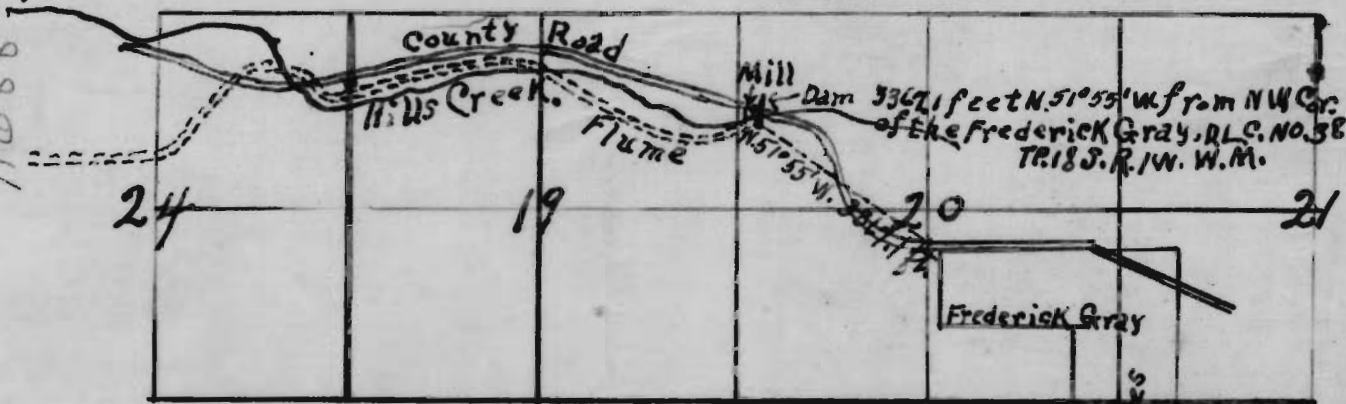


Hills Creek Lumber Co. Log Pond.

TP. 18 S. R. 2 W.

TP. 18 S. R. 1 W.

11688



Mill Dam 3362.1 feet N. 51° 55' W. from NW Cor. of the Frederick Gray, D.L.C. NO. 38 TP. 18 S. R. 1 W. W.M.

24

19

20

21

Frederick Gray

Claim 38
159.66 Acres

Application No 11688
Permit No 8130