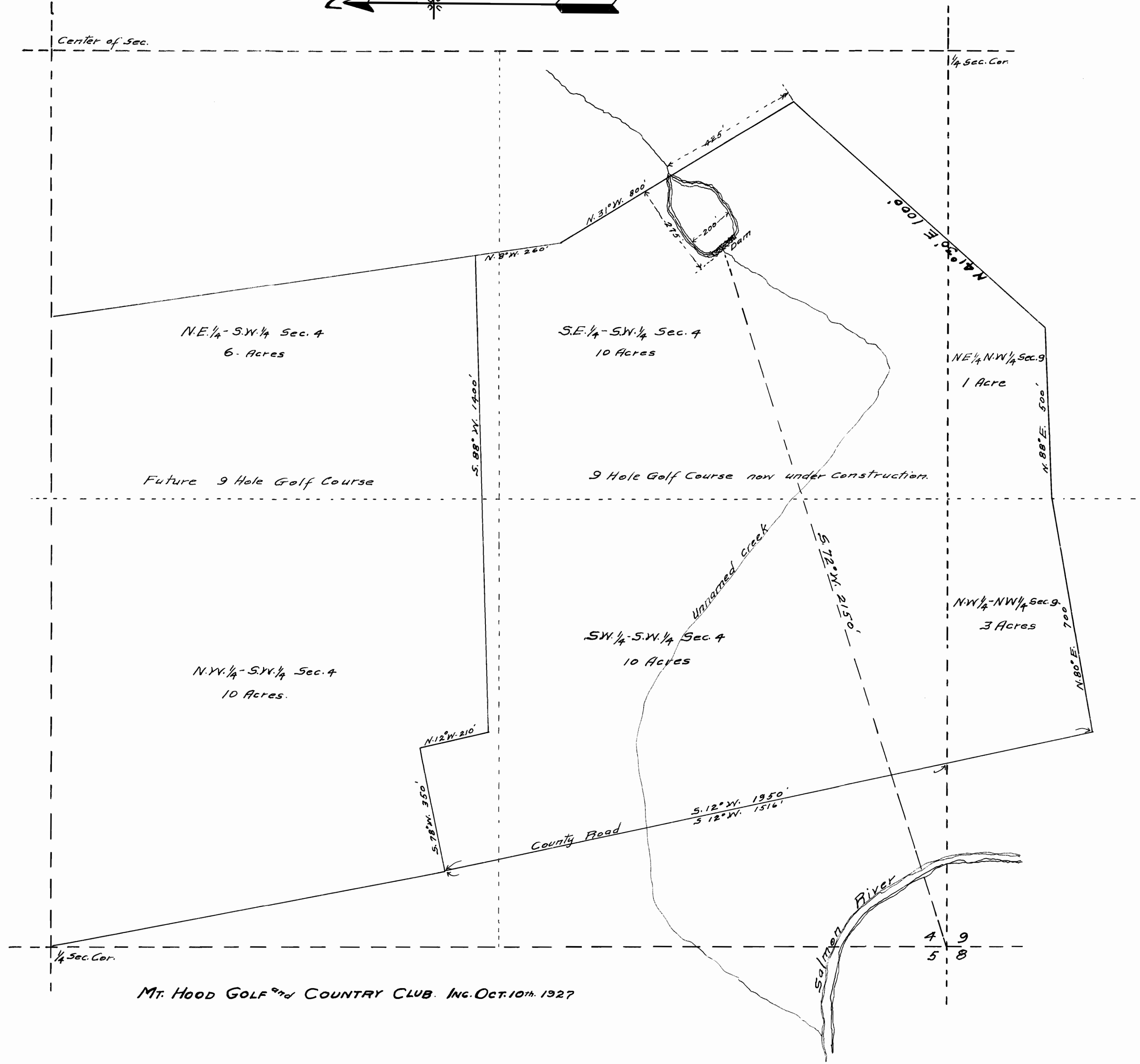
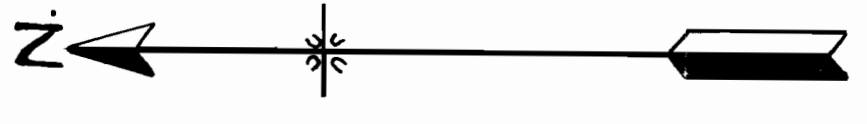


MAP OF
UNNAMED CREEK FLOWING THROUGH THE
S. 1/4 OF SEC. 4 - T. 3 S. R. 7 E. W. 1/4 M.
 SHOWING ACREAGE TO BE IRRIGATED
CLACKAMAS COUNTY OREGON

SCALE - 1 in. = 200 ft. MARCH 14 - 1928.



MT. HOOD GOLF AND COUNTRY CLUB. INC. OCT. 10th. 1927