

West

North

22
21
20
19
18
17
16
15
14
13
12
11
10
9
8
7
6
5
4
3
2
1
corner
Sec

26
23
T.3 S. R. 3 W.
Yamhill County
Oregon.

APP 10931
P. 8388

East

1/4 Sec Corner

Cornelia J. S. Greer

Clark Noble

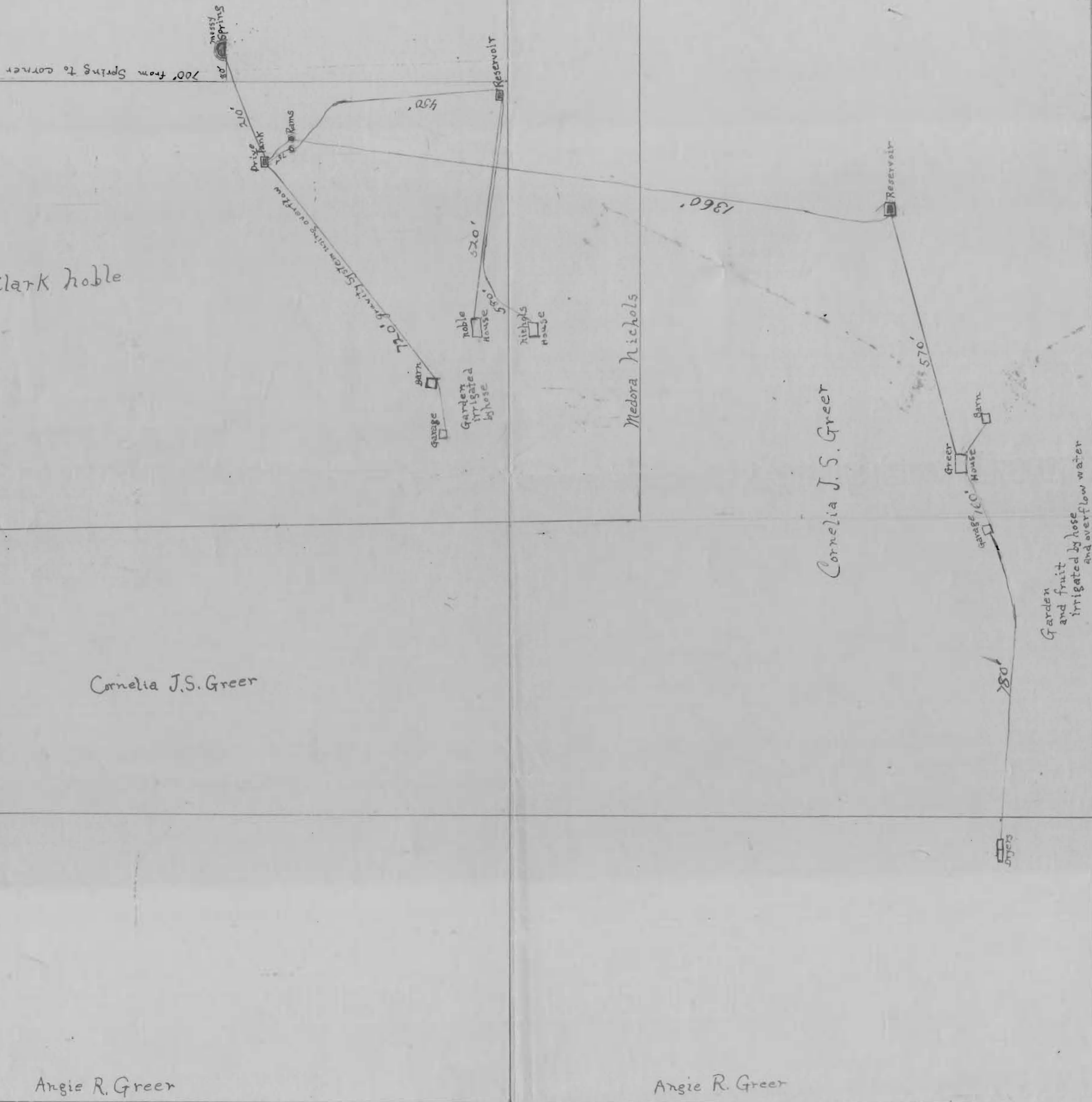
Cornelia J. S. Greer

Angie R. Greer

Angie R. Greer

Medora Nichols

Cornelia J. S. Greer



Application No. 10931
Permit No. 8388

Greer - Noble - Nichols
Water system shown in red ink.

South