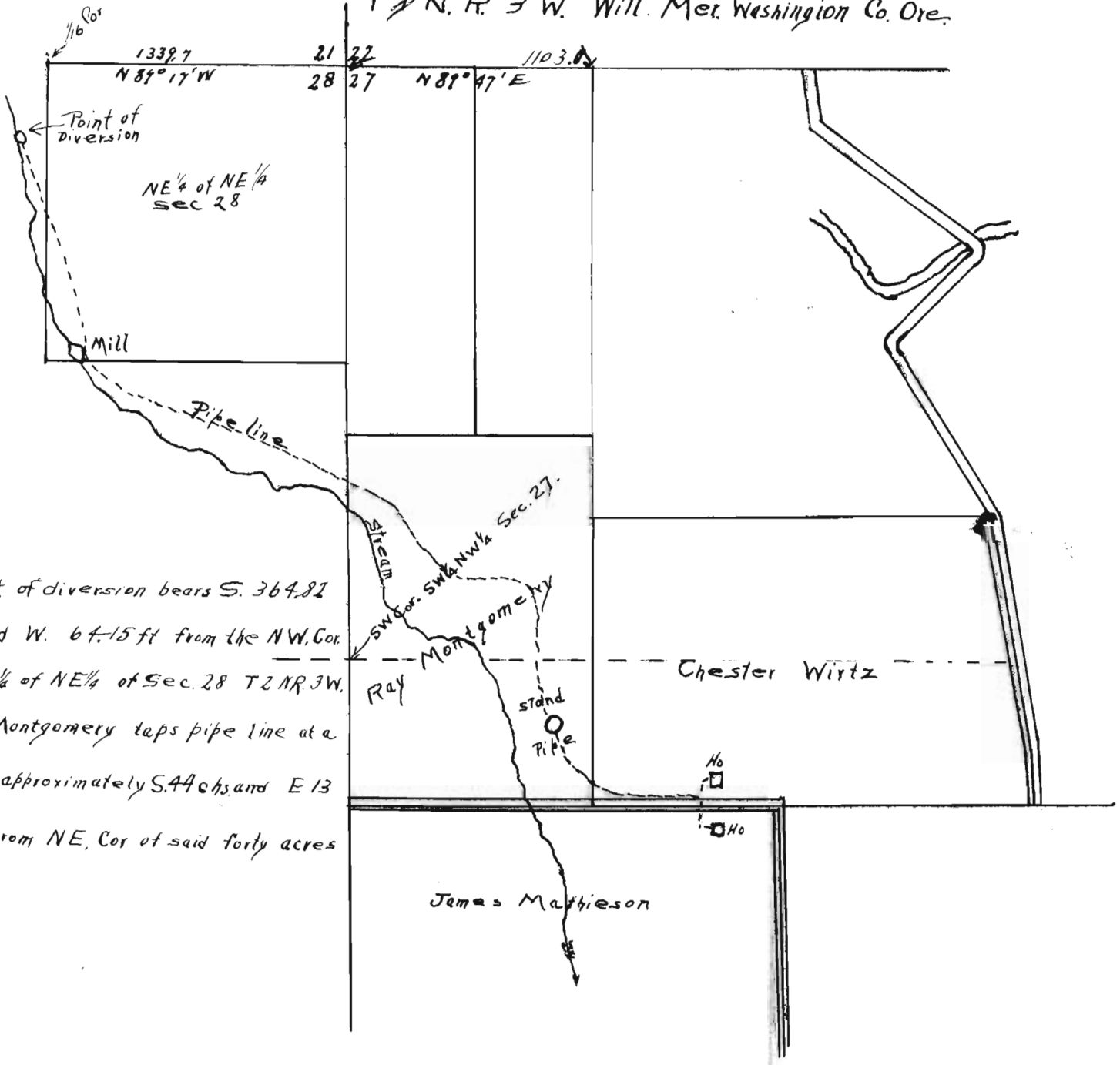


L. M. GRAHAM
 ATTORNEY AT LAW
 FOREST GROVE, OREGON

T² N. R. 3 W. Will. Mer. Washington Co. Ore.



Point of diversion bears S. 364.82
 ft. and W. 64.15 ft. from the NW. Cor.
 of NE 1/4 of NE 1/4 of Sec. 28 T² N. R. 3 W.
 Ray Montgomery taps pipe line at a
 point approximately S. 44 chs and E 13
 chs from NE. Cor of said forty acres

Application No. 12279
 Permit No. 18667

Application No 12279 Ray W. Montgomery