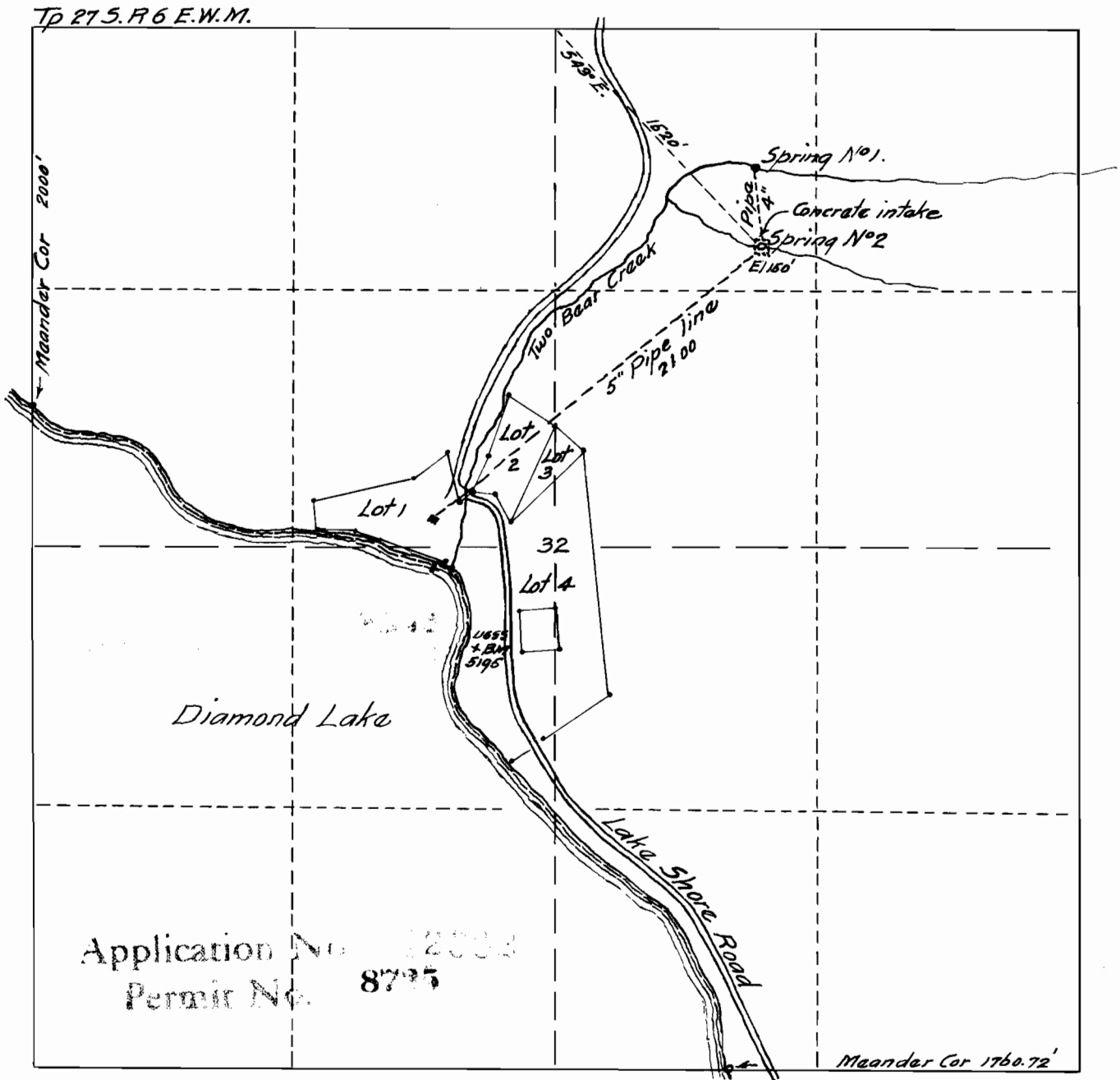


—MAP—

Accompanying application of DIAMOND LAKE IMPROVEMENT CO
of Medford, Jackson County, Oregon. for permit to the waters
of Two Springs tributary to Two Bear Creek tributary to
Diamond Lake Douglas County Oregon. for Domestic and
Public use at Camp Resort. — Oct 4th 1928. —



Map made from plat of Survey made by Donald N. Matthews
the same correctly showing the property of the Diamond Lake
Improvement Company, the place of use and location of Springs
compiled by.

— Fred N. Cummings. C.E. —