

SEE INSET FOR ADDITIONAL ACRES SECTIONS 17 & 8

T. 9S. R.4W., W.M.
PLATT DAIRY
 SECTIONS 8, 16, 17, 20, 21, 22 AND 28
 POLK COUNTY

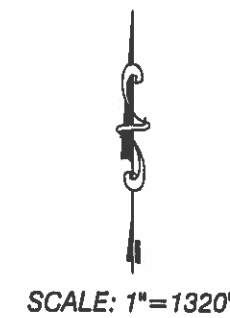
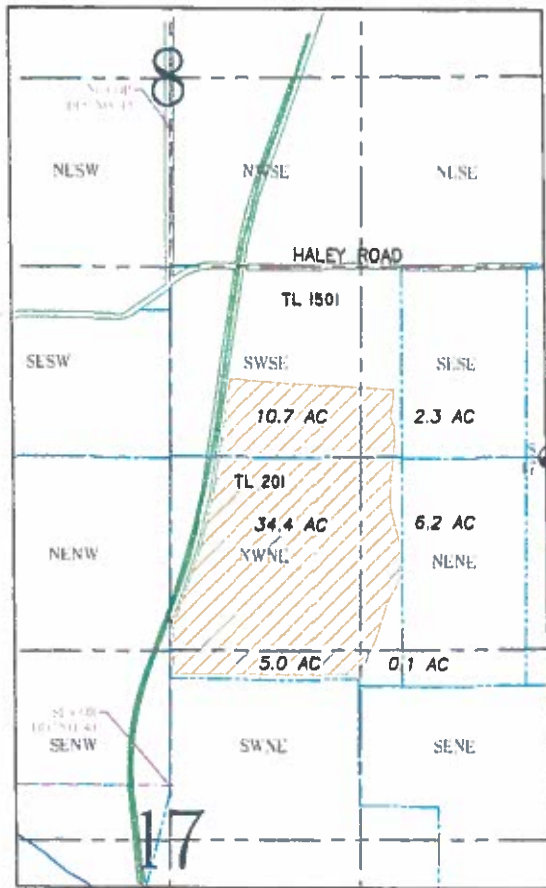
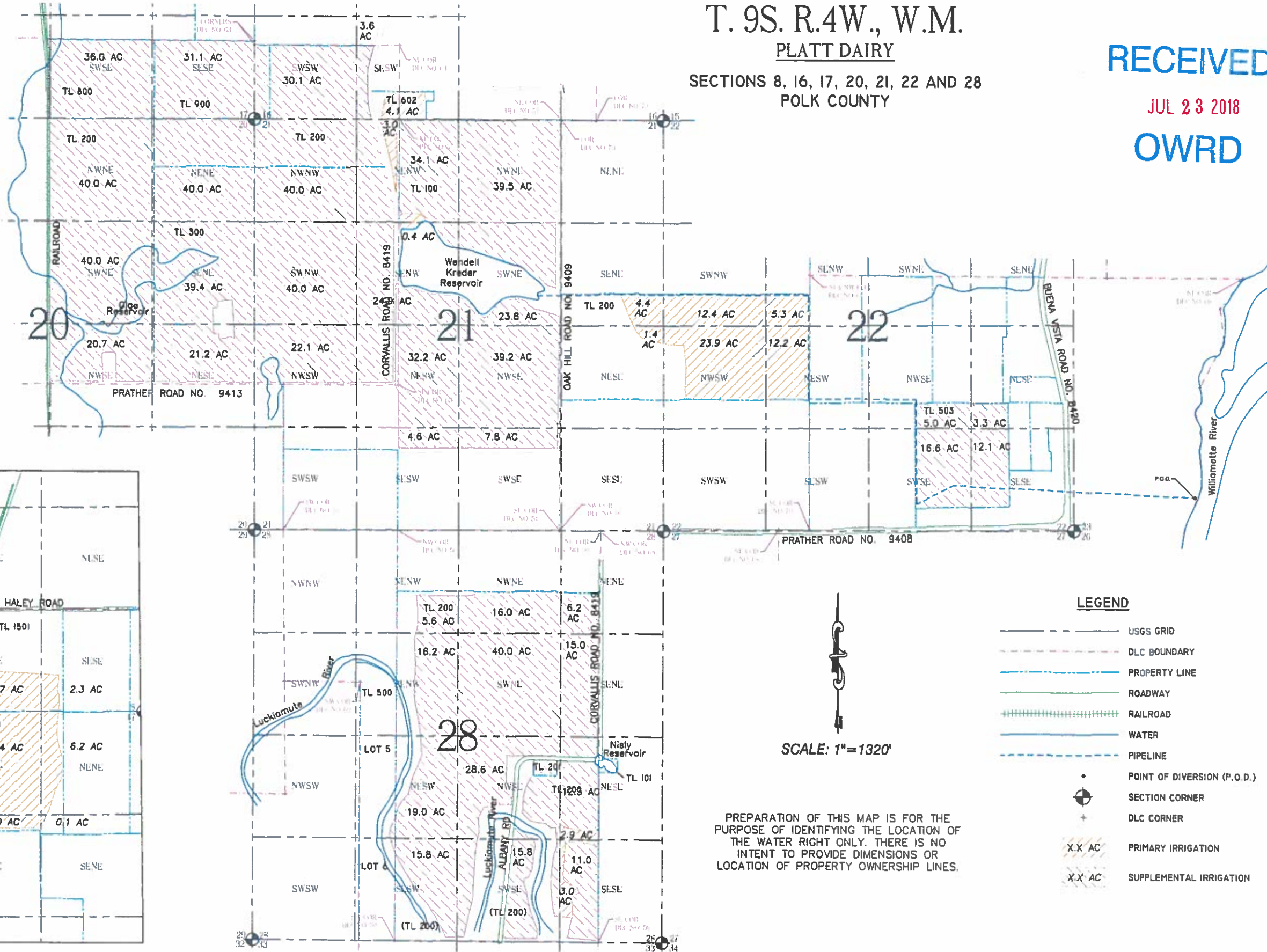
RECEIVED

JUL 23 2018

OWRD

NOTES:

P.O.D. IS LOCATED 430 FT NORTH AND 1550 FT EAST FROM THE SOUTHWEST CORNER OF SECTION 23.



LEGEND

- USGS GRID
- - - - - DLC BOUNDARY
- PROPERTY LINE
- ROADWAY
- RAILROAD
- WATER
- PIPELINE
- POINT OF DIVERSION (P.O.D.)
- ⊕ SECTION CORNER
- + DLC CORNER
- X.X AC PRIMARY IRRIGATION
- X.X AC SUPPLEMENTAL IRRIGATION

PREPARATION OF THIS MAP IS FOR THE PURPOSE OF IDENTIFYING THE LOCATION OF THE WATER RIGHT ONLY. THERE IS NO INTENT TO PROVIDE DIMENSIONS OR LOCATION OF PROPERTY OWNERSHIP LINES.

FILE PATH & NAME: C:\CONSULTING\BK\PLATT DAIRY\4\PLATT DAIRY 072318.dwg

BK WATER RIGHT CONSULTING
 PO Box 13434 Salem, Oregon 97309

Platt Dairy Irrigation Area Map

APPLICATION#: X-XXXXX PERMIT#: X-XXXXX AMENDMENT#: X-XXXXX SHEET 1 OF 1

S-88645

54988-5

IMPORTANT
This Map for Assessment
and Taxation Purposes
ONLY

SEC.8 T9S R4W WM
POLK COUNTY

Scale 1" = 400'

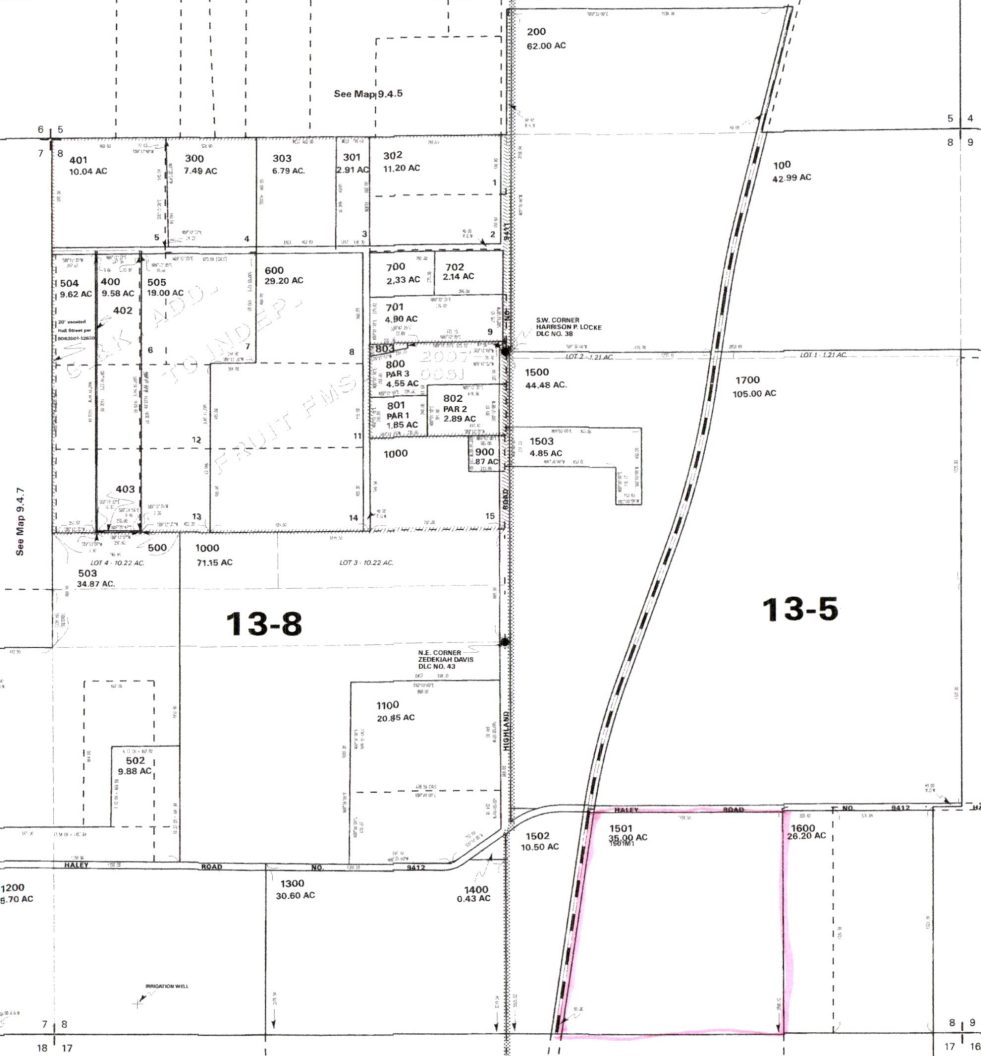
9.4.8

See Map 9.4.5

See Map 9.4.7

See Map 9.4.9

Canceled No.
501



13-8

13-5

OWPRD

JUL 23 2018

RECEIVED

06/02/17

See Map 9.4.17

9.4.8

5-8864

IMPORTANT
This Map for Assessment
and Taxation Purposes
ONLY

SEC.16 T9S R4W WM
POLK COUNTY
Scale 1" = 400'

See Map 9.4.10

9.4.16

Canceled No.

See Map 9.4.17

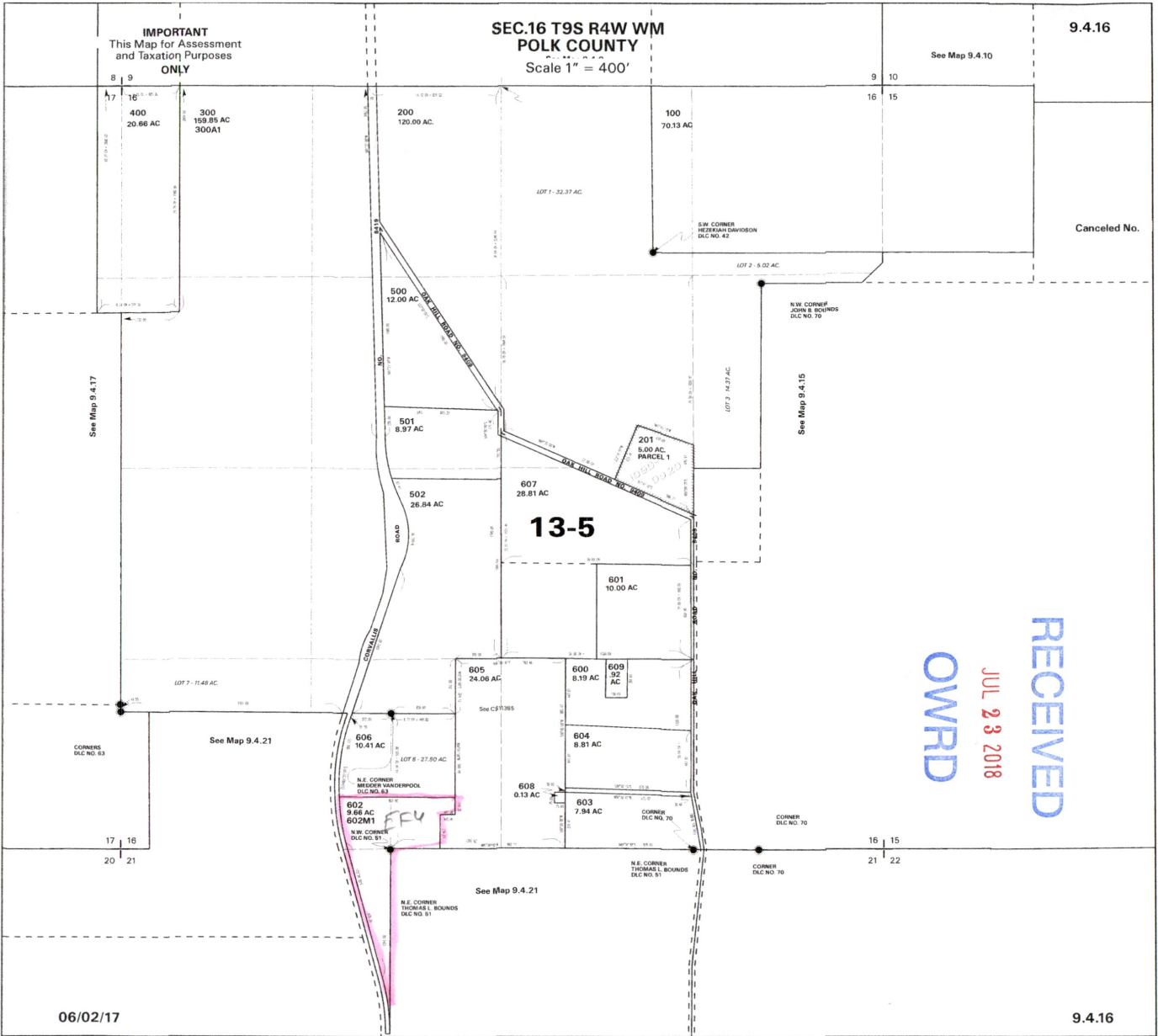
See Map 9.4.15

13-5

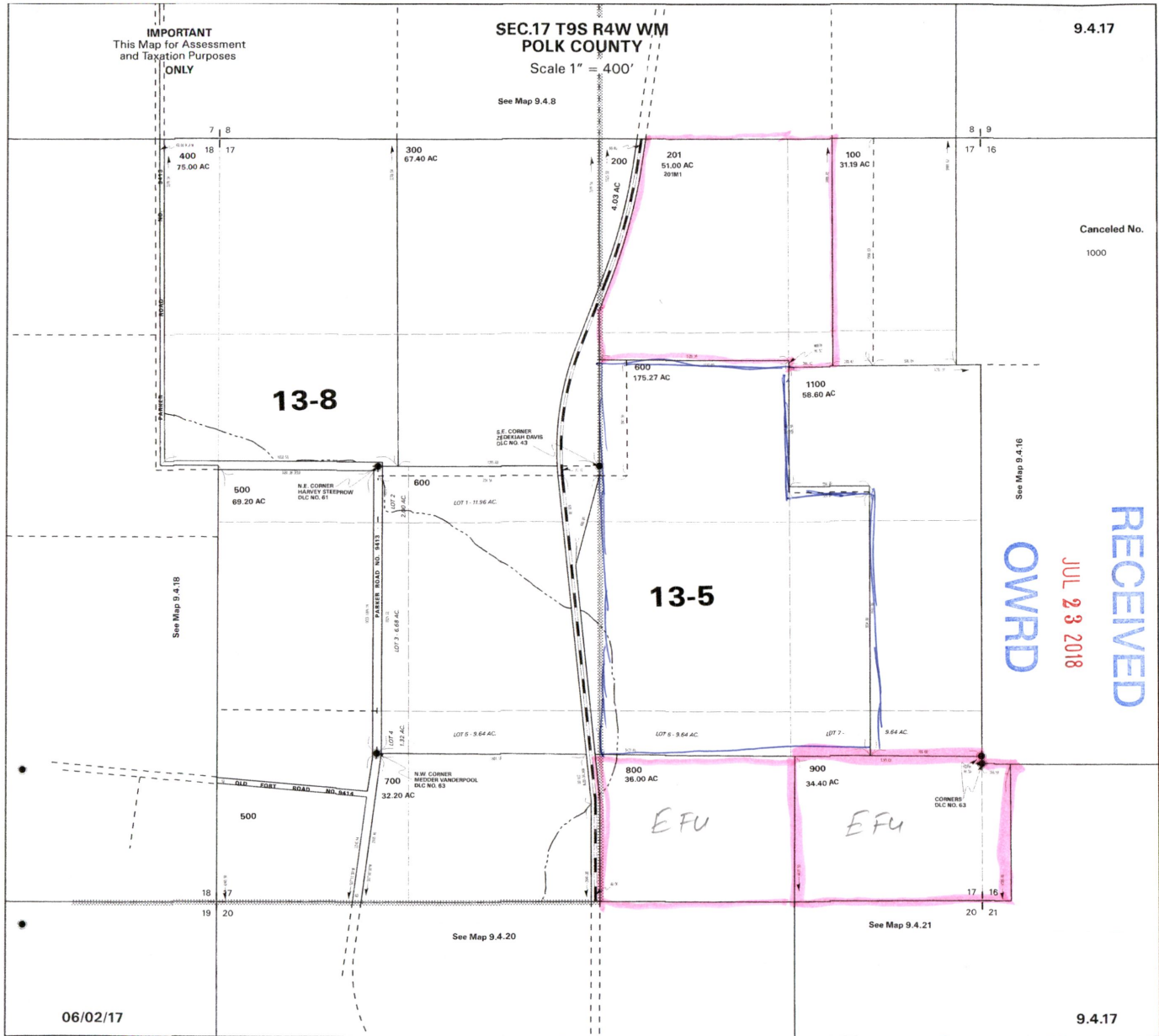
RECEIVED
JUL 23 2018
OWPRD

06/02/17

9.4.16



5-88645



IMPORTANT
This Map for Assessment
and Taxation Purposes
ONLY

SEC.17 T9S R4W WM
POLK COUNTY

Scale 1" = 400'

See Map 9.4.8

9.4.17

Canceled No.
1000

13-8

13-5

RECEIVED
JUL 23 2018
OWPRD
See Map 9.4.16

06/02/17

9.4.17

5-88645

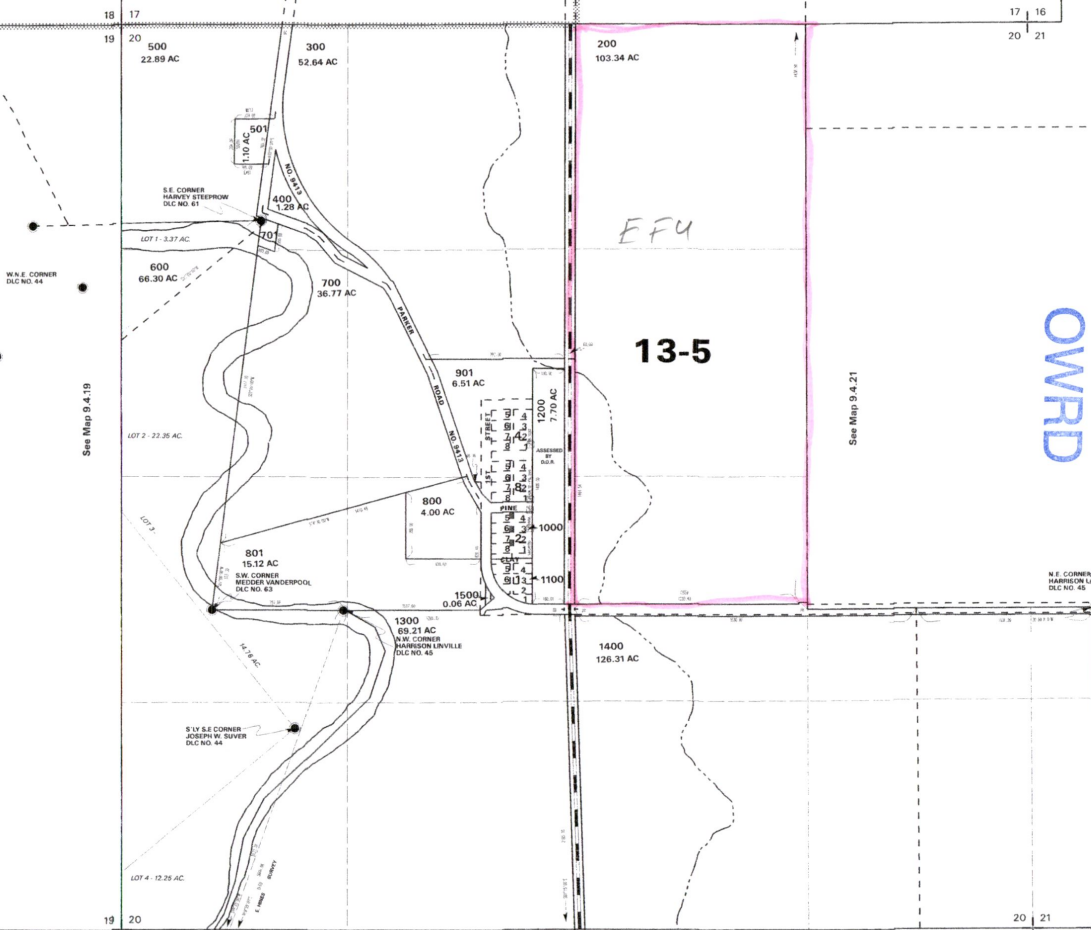
IMPORTANT
This Map for Assessment
and Taxation Purposes
ONLY

**SEC.20 T9S R4W WM
POLK COUNTY**

Scale 1" = 400'

9.4.20

See Map 9.4.17



Canceled No.

- 100
- 601
- 602
- 900
- 1301
- 1401
- 1402
- 1403
- 1501

RECEIVED
OWPRD
 JUL 23 2018

See Map 9.4.19

See Map 9.4.21

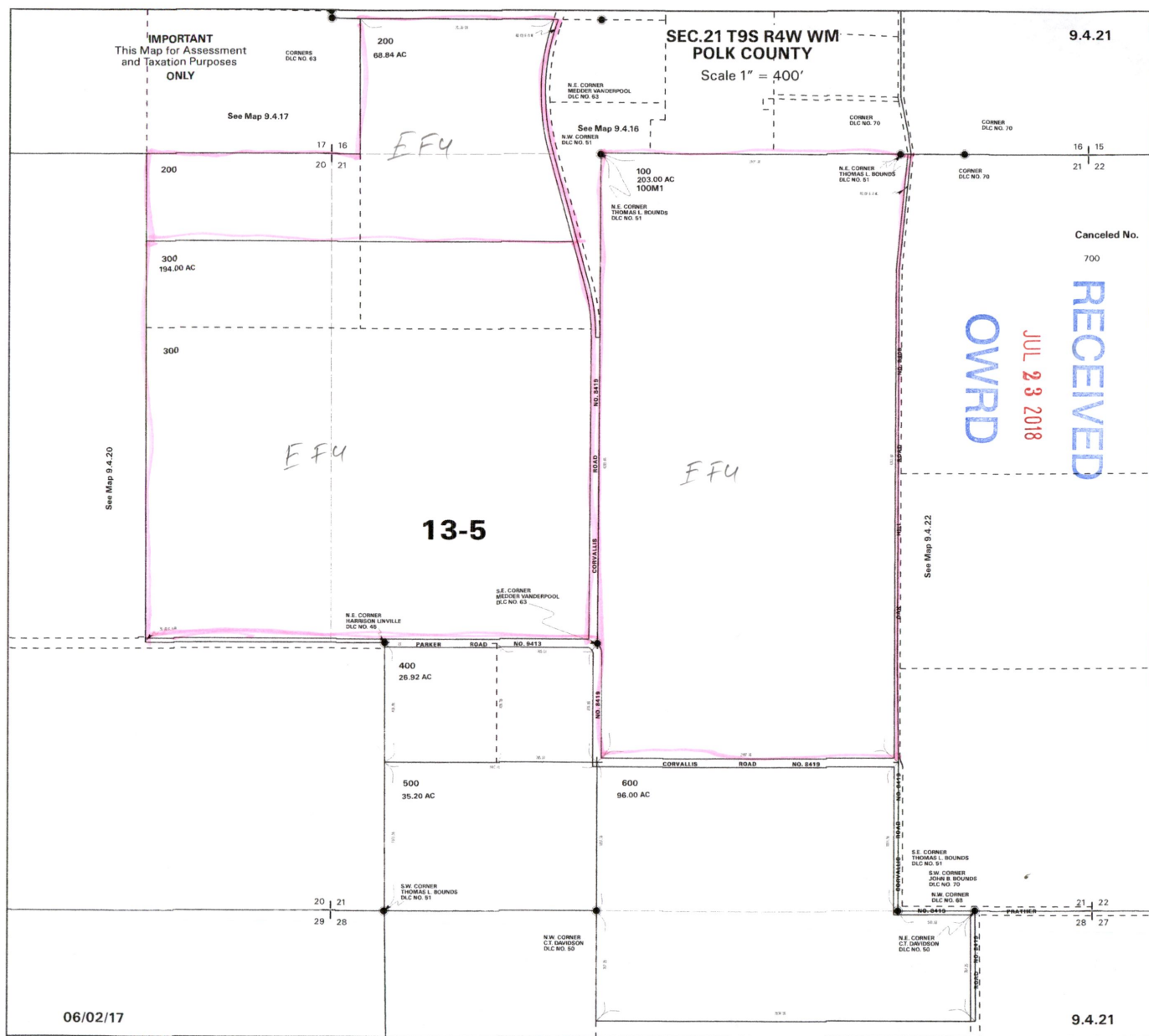
See Map 9.4.30

See Map 9.4.29

06/02/17

9.4.20

S-88645



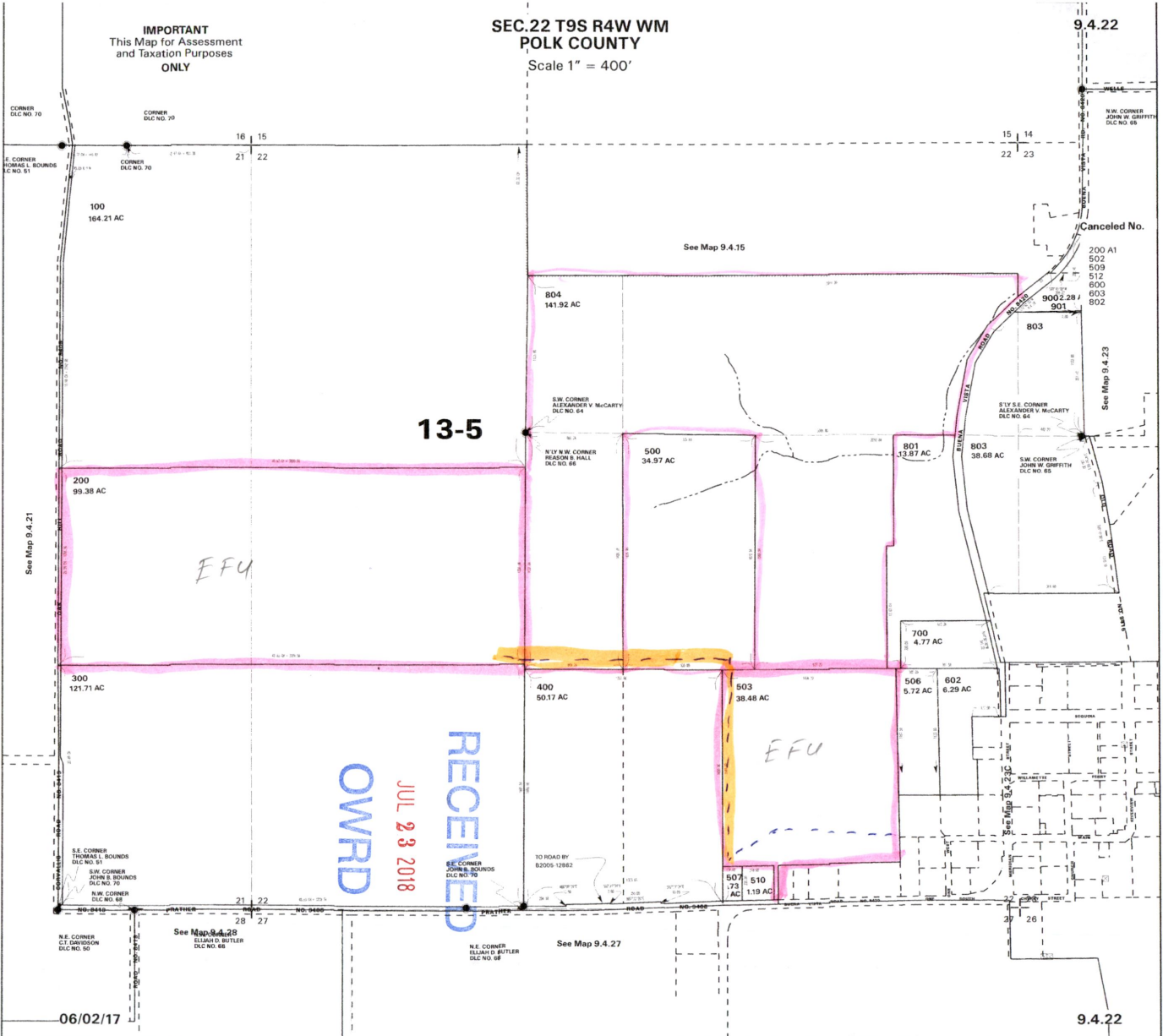
8864

IMPORTANT
This Map for Assessment
and Taxation Purposes
ONLY

SEC.22 T9S R4W WM
POLK COUNTY

Scale 1" = 400'

9.4.22



RECEIVED
OWRD
JUL 23 2018

06/02/17

9.4.22

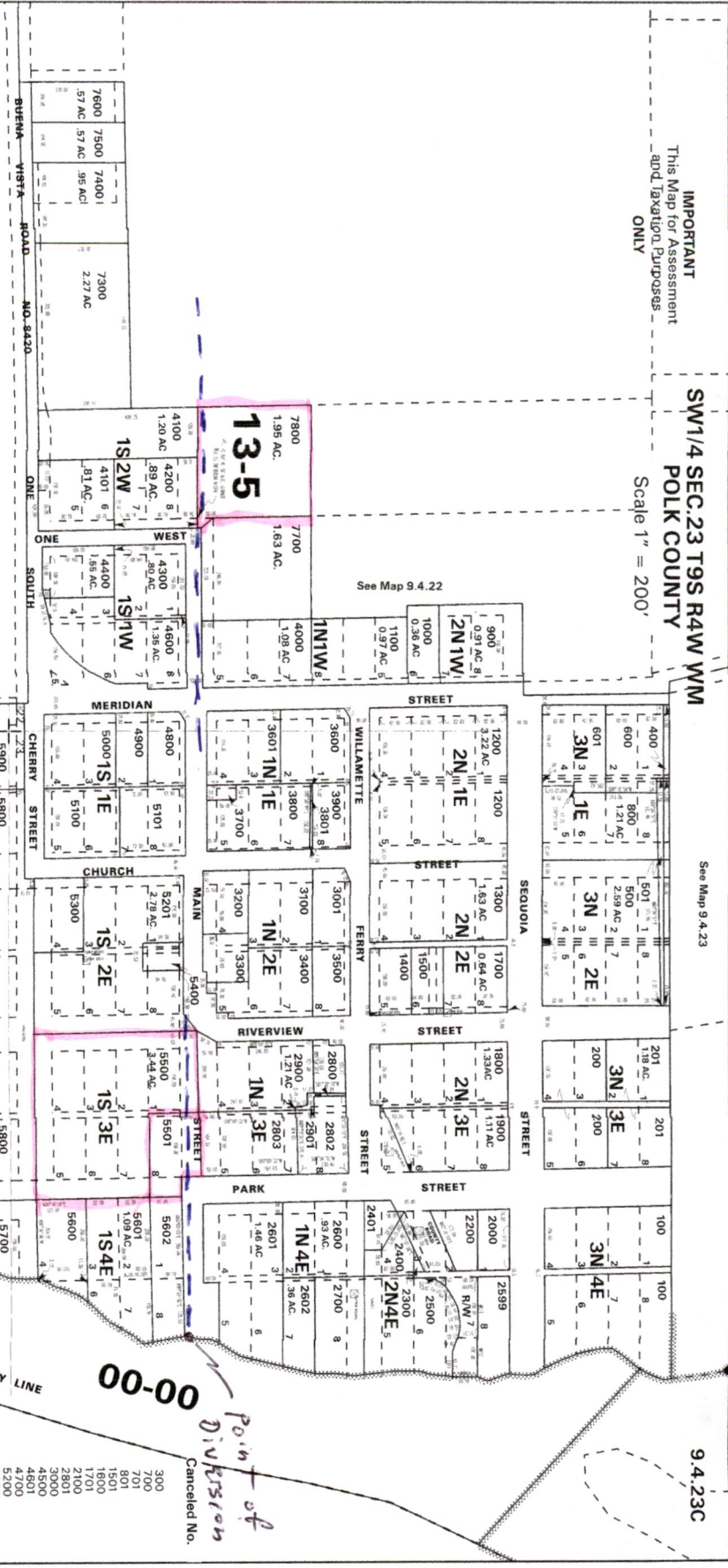
5-8645

IMPORTANT
This Map for Assessment
and Taxation Purposes
ONLY

SW1/4 SEC.23 T9S R4W WM
POLK COUNTY
Scale 1" = 200'

See Map 9.4.23

9.4.23C



See Map 9.4.27

See Map 9.4.22

See Map 9.4.27

300
700
701
801
1801
1802
1701
2100
2801
3000
4500
4700
5200
6000
6201
6202
6800
7100
7200

Cancelled No.

00-00
Point of
Division

RECEIVED
JUL 23 2018
OWRPD

06/02/17

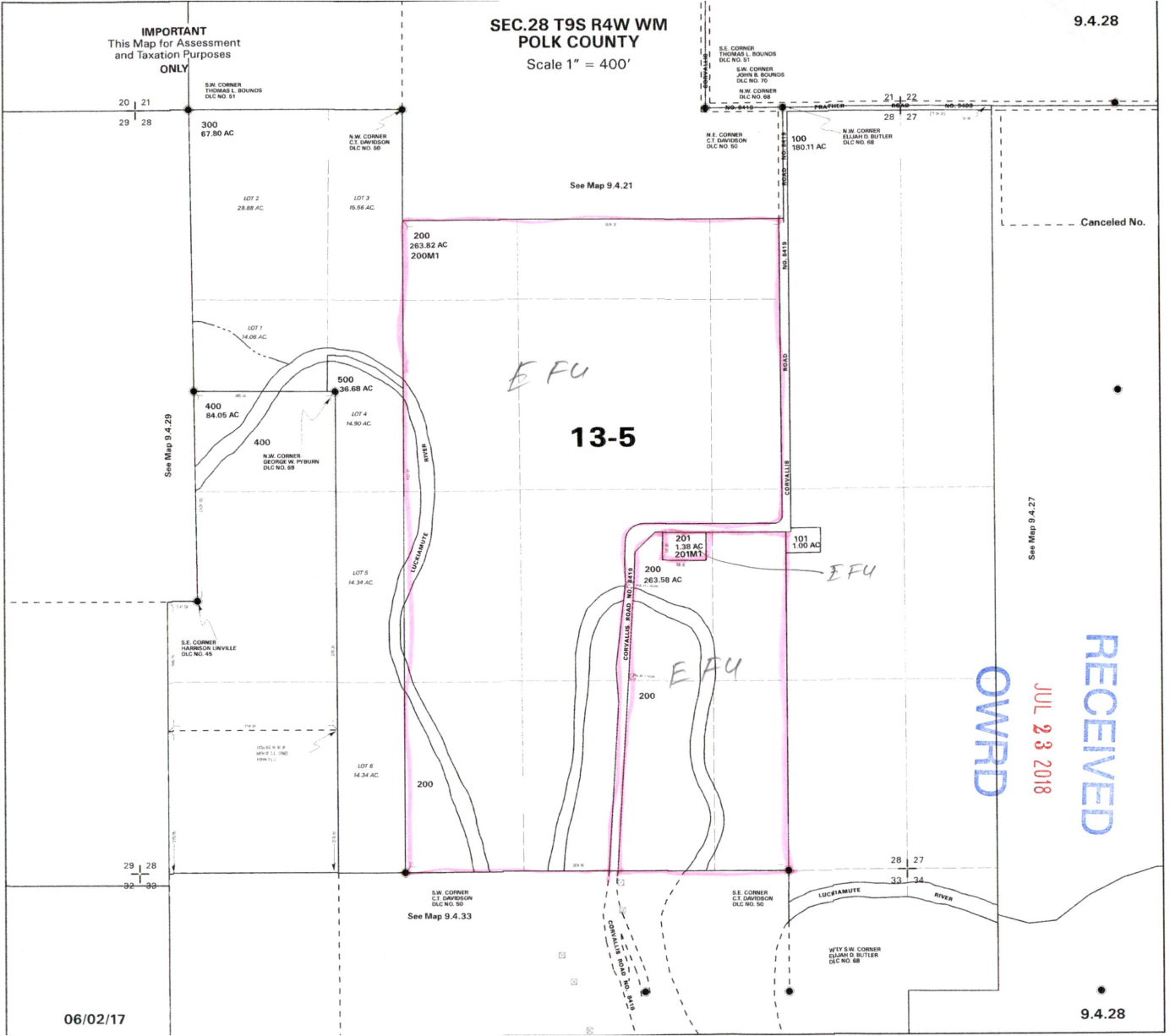
9.4.23C

57988-5

IMPORTANT
This Map for Assessment
and Taxation Purposes
ONLY

SEC.28 T9S R4W WM
POLK COUNTY
Scale 1" = 400'

9.4.28



06/02/17

9.4.28

RECEIVED
JUL 23 2018
OWRPD