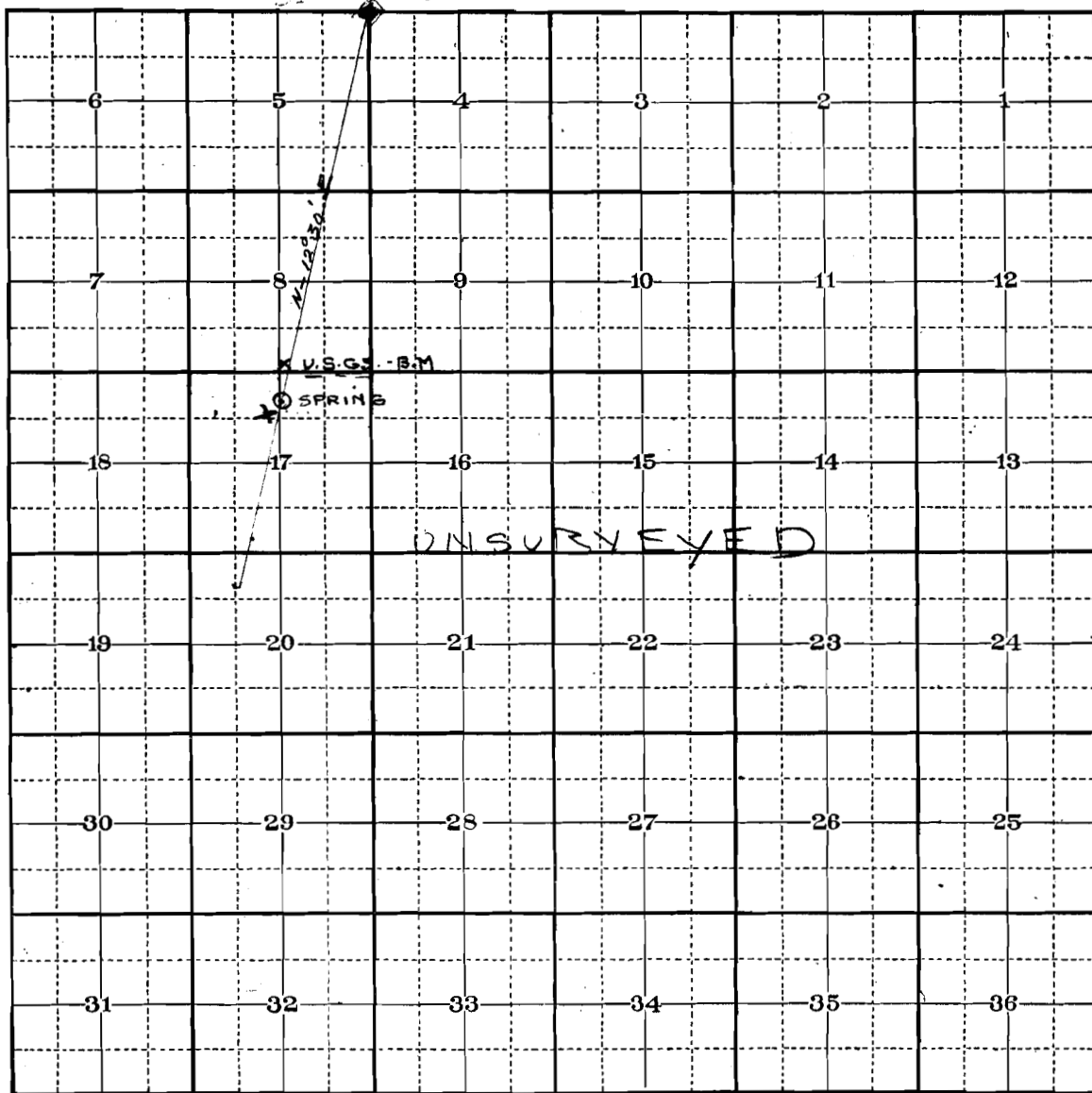


Application No. 12652

Permit No. 8994

Form 974.

T. 28S - R. 6E - UNSURVEYED Mos.



True Meridian.

THE SOUTH-CORNER common to Sections - 32 & 33 -
T 27S R 6E - bears N 12° 30' E - 2.2 MILES dist.
From SHORT CREEK SPRING