

1777

OFFICE OF STATE ENGINEER

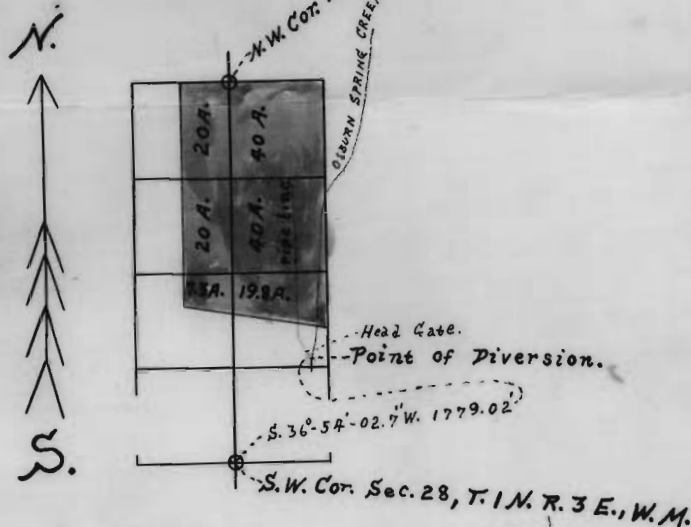
RECEIVED

OCT 13 1911

SALEM, OREGON

THE OSBURN PIPE LINE.

Scale of 40 Chains to 1 Inch.

By L. R. Lewis,
C. E.Application No. 1777
Permit No. 900

DESCRIPTION.

Beginning at a + cut into a Stone Boulder about 14"x12"x5", laid flat side down, on a gravel bed, in about the middle of Osburn Spring Creek; from which the S.W. Corner of Sec. 28, T. 1 N. R. 3 E., W. M., bears S. 36°-54'-02.7"W. 1779.02' distant; a + cut into the top of a large Stone Boulder bears N. 40°-10'-17.9"W. 14.54' distant; a + cut into the top of a large Stone Boulder bears N. 81°-25'-23.6"W. 13.15' distant; the center of about a 24" Cedar Tree bears N. 67°-34'-09.0"W. 52.82' distant; the center of about a 24" Fir Tree bears S. 89°-16'-18.8"E. 44.24' distant; the proposed point for the Eastern extremity of a concrete Dam bears S. 26°-20'-14.0"E. 22.79' distant; the proposed point for the Western extremity of said concrete Dam bears S. 48°-08'-53.5"W. 26.03' distant; and the proposed angle point of said concrete Dam and center of a 3.00' in width overflow channel or spill-way in the top of said concrete Dam bears N. 10°-54'-19.8"E. 3.00' distant.

Thence N. 23°-06'-02.3"W. 377.42' to a Point in "Osburn Avenue" for P. C.; from which the center of the proposed Curve of 30.00' radius bears N. 66°-53'-56.2"E. 30.00' distant. Thence curving to the Right and Northerly around the arc of said curve 12.61' distant to a Point in a Line Parallel to and distant Westerly 10.00' from the East Boundary Line of "Osburn Avenue"; from which the Center of said Curve bears S. 89°-00'-34.3"E. 30.00' distant. Thence N. 0°-59'-25.7"E., tracing said Line Parallel to and distant Westerly 10.00' from the East Boundary Line of "Osburn Avenue", 2101.43' to a Point for the proposed end of said "Osburn Pipe Line".

Lands to be irrigated are colored orange.