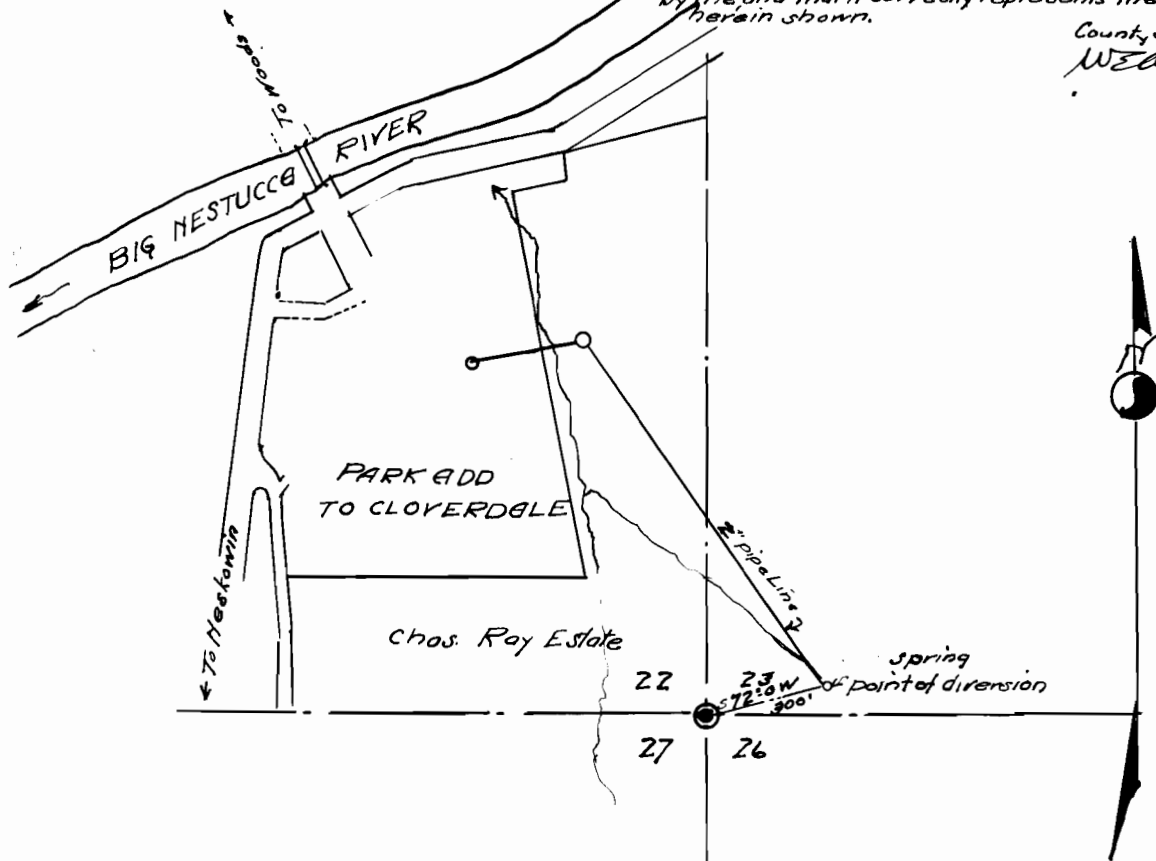


# SURVEYORS CERTIFICATE

I, W.E. Anderson of Tillamook, Oregon do here certify that this map was made from notes during an actual survey made by me, and that it correctly represents the works herein shown.

County Surveyor,  
W.E. Anderson



## WATER RIGHT.

FOR  
CLOVERDALE POWER & WATER CO.,  
SEC 22 & 23 T4S R10 W. M. 11  
T11N B1700k, Ore. Sec 61 & 600, 1979.

Application No. 12767

Project No. 9079