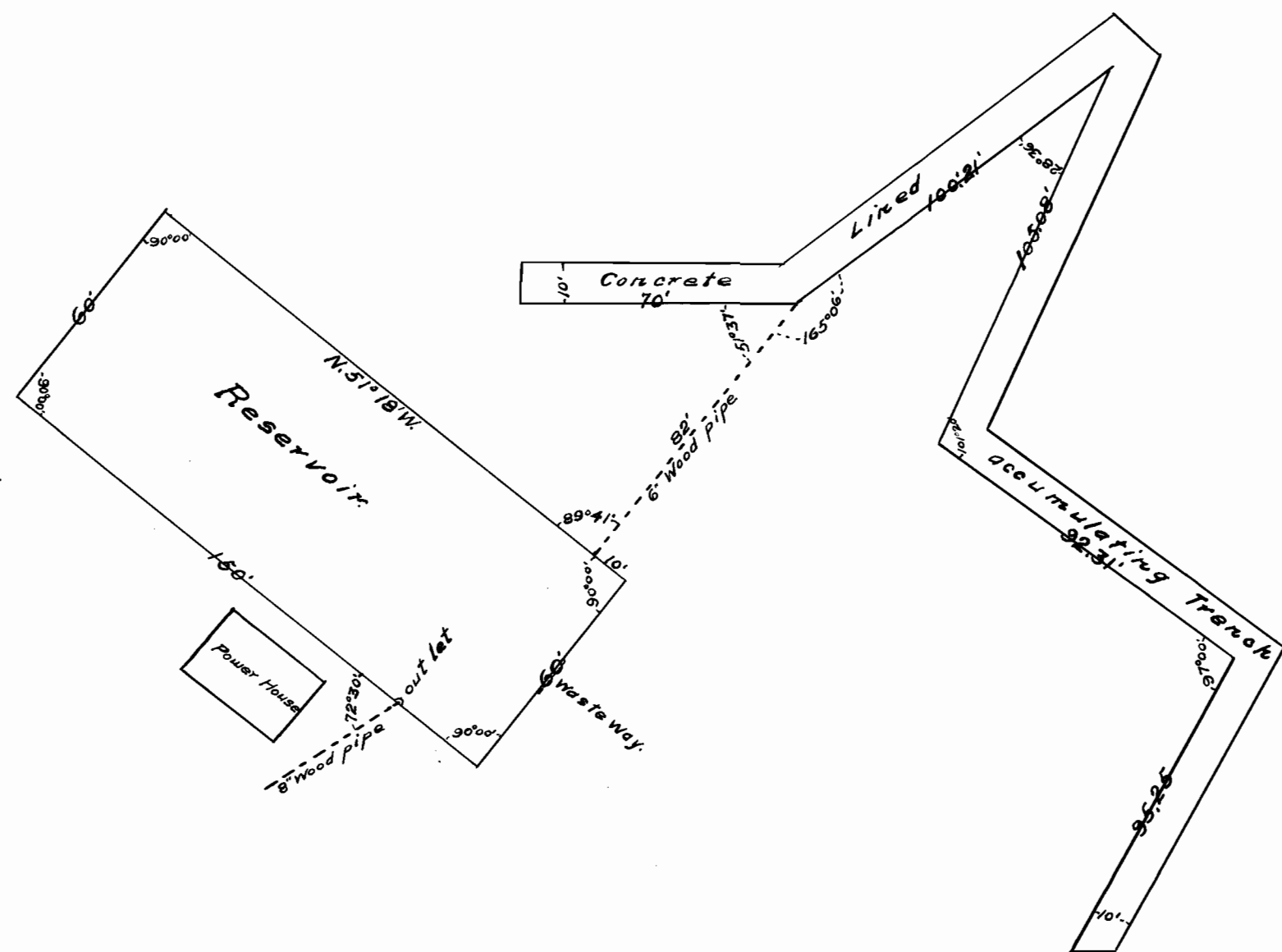
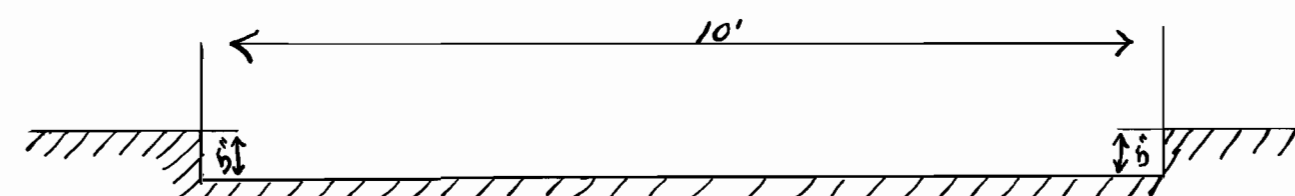
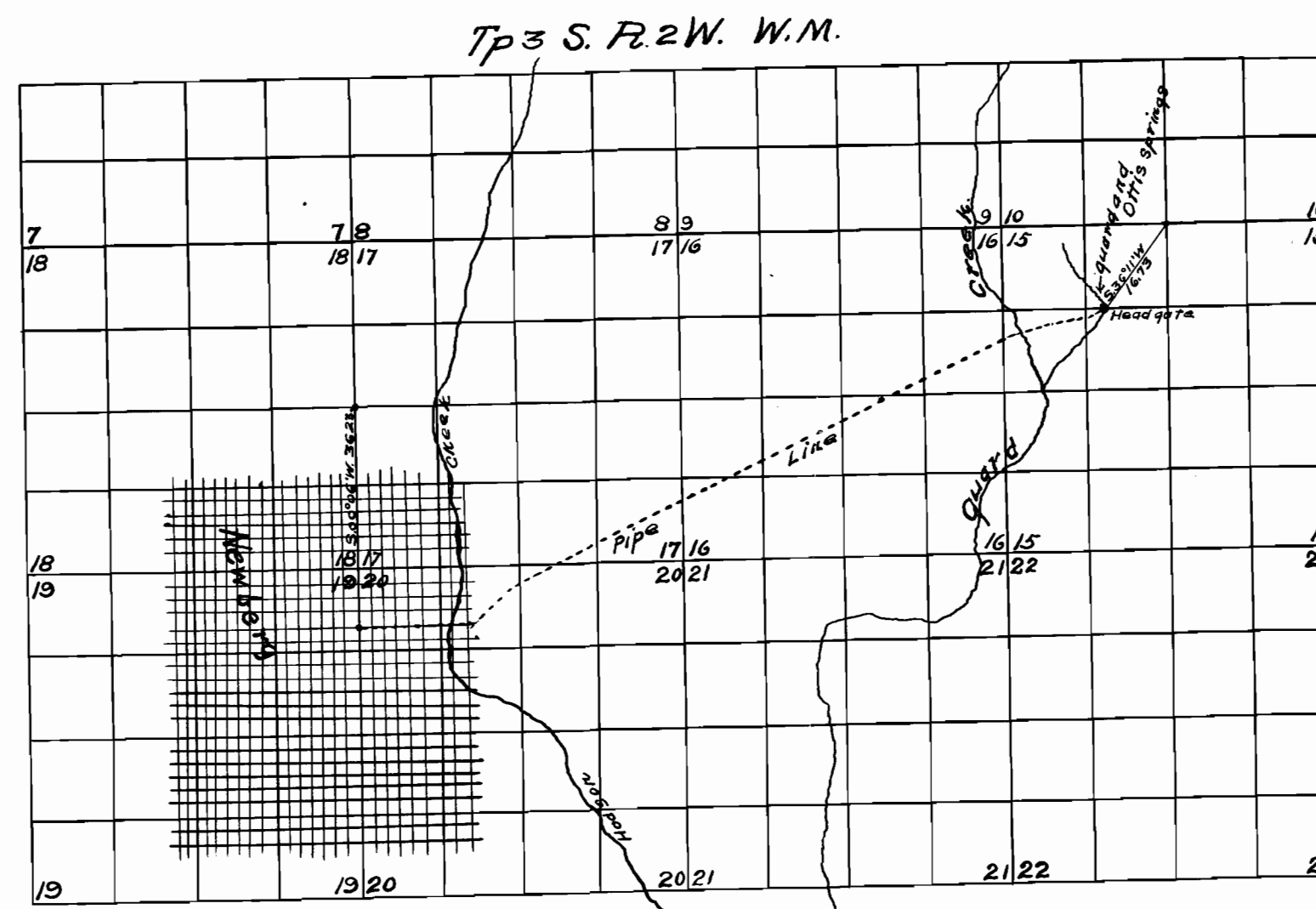


OFFICE OF STATE ENGINEERS
 RECEIVED
 SEP 7 1911
 SALEM OREGON

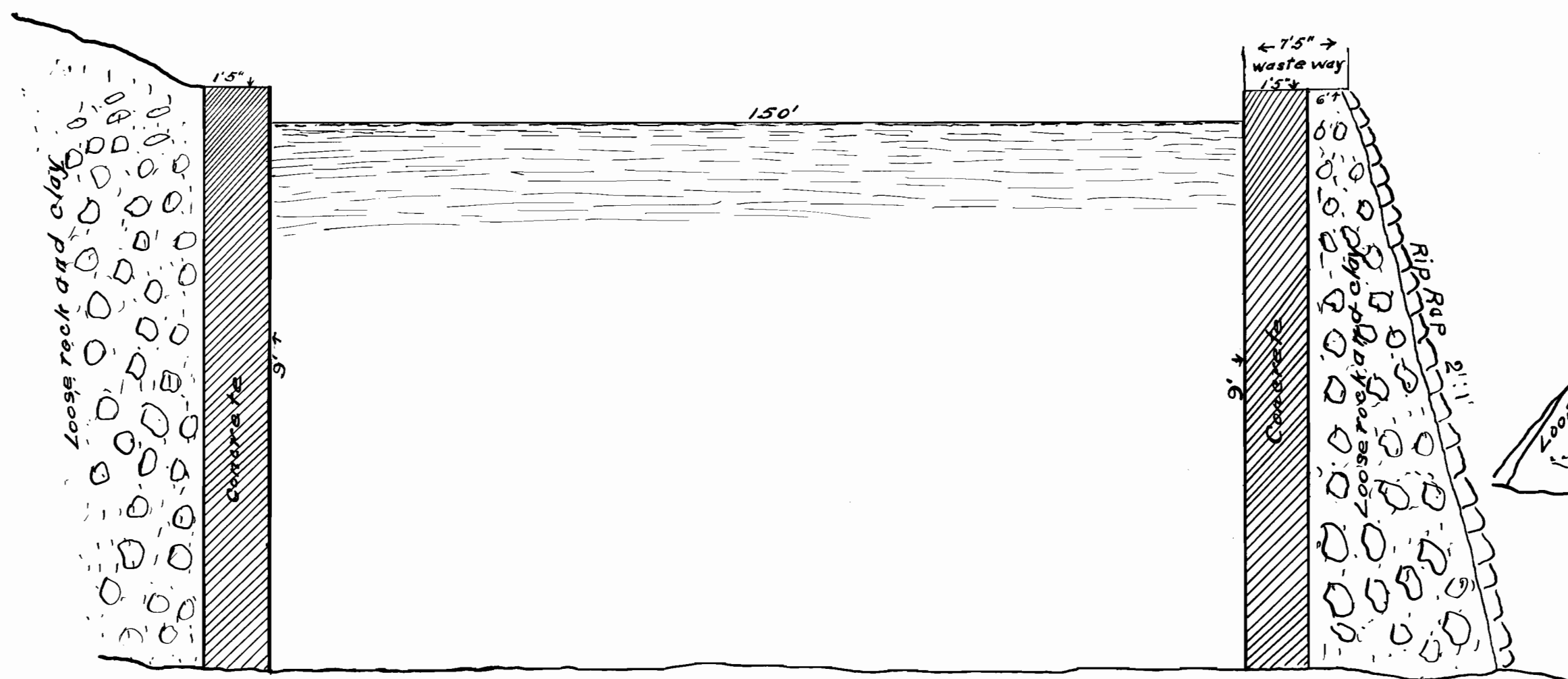
Application No. 1646
 Permit No. 915



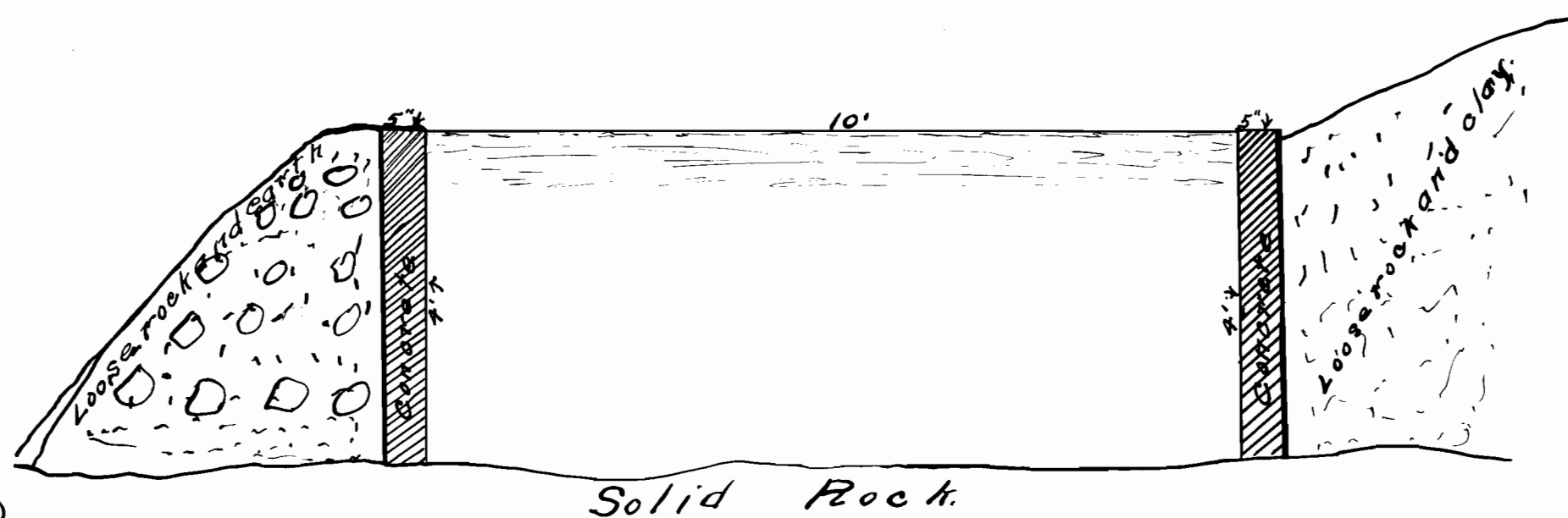
Plan of Reservoir and Accumulating Trench
 Scale 1"=40'



Plan of wasteway
 Scale 1"=2'
 Flume to carry wastewater
 from waste way to old channel



Solid Rock.
 Cross-section of Reservoir.
 Vertical Scale 1"=2'
 Horizontal Scale 1"=20'



Solid Rock.
 Cross-section of accumulating Trench
 Scale 1"=2'
 Trench to accumulate water from
 Springs and Seeps.

Map and plans of
 Location of City of Newberg Reservoir Site
 and pipe Line Route
 for
 City of Newberg
 To accompany applications for permits.
 To store and appropriate public waters.

I Sylvander Simms of McMinnville Ore.
 do hereby certify that this map was
 made from notes taken during an ac-
 tual survey made by me on August 25th
 and 26th 1911 and that it correctly rep-
 resents the work described in the
 accompanying application together
 with the location of streams and
 other ditches in the immediate vicinity.
 Sylvander Simms
 Surveyor.