

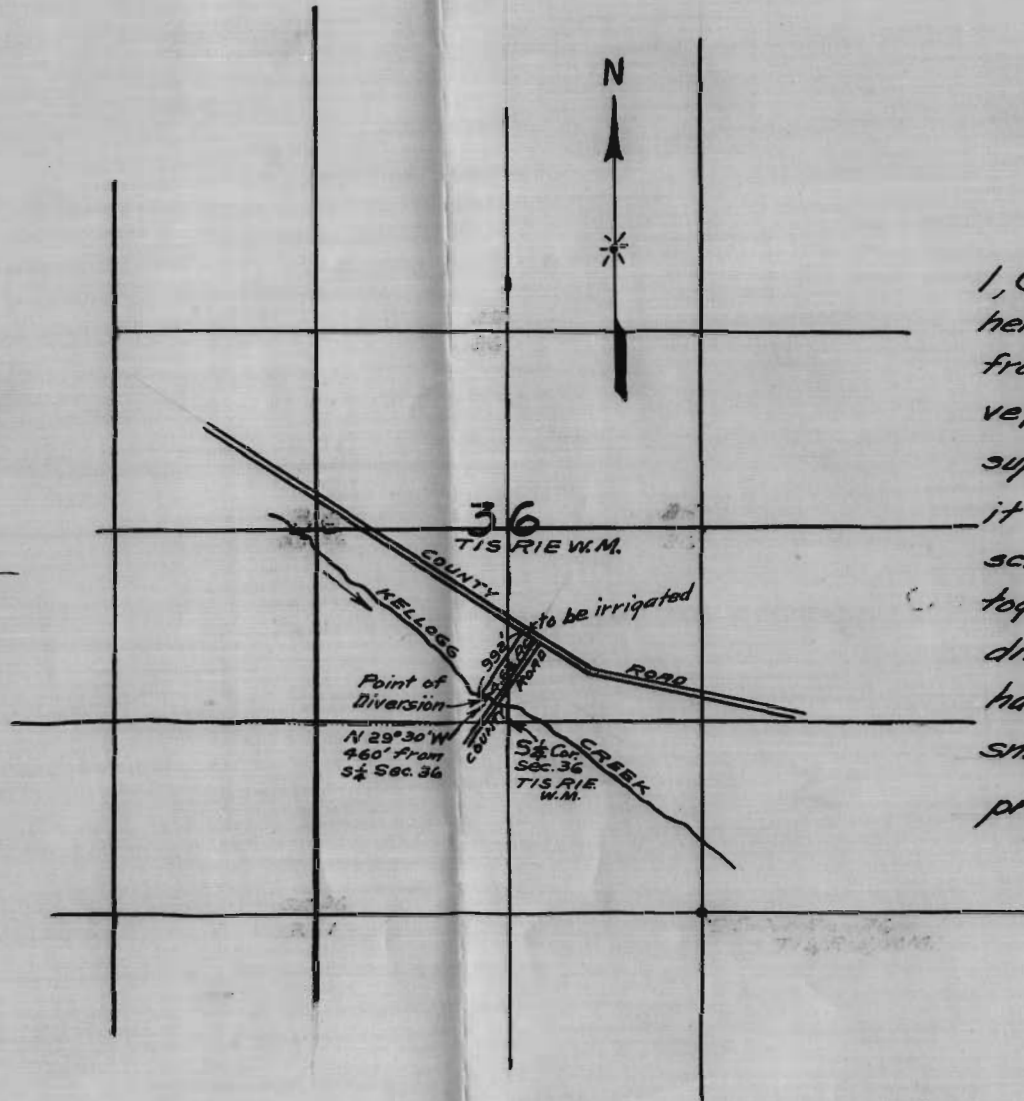
RECEIVED
OCT 30 1911

Map
Accompanying application for permit
to appropriate water.

A. Berg.
Oct. 25 1911.
Scale 2 in.=1 mi.

OFFICE OF STATE ENGINEER
RECEIVED
OCT 30 1911
SALT LAKE CITY

Application No. 1815
Permit No. 943



I, George Scoggin, of Portland Oregon do hereby certify that this map was made from notes taken during an actual survey made by me (or under my immediate supervision) on October 24, 1911, and that it correctly represents the works described in the accompanying application together with the streams and other ditches in the immediate vicinity, and has written thereon the area in each smallest legal subdivision which it is proposed to irrigate.

Geo. Scoggin
Surveyor