

MAP

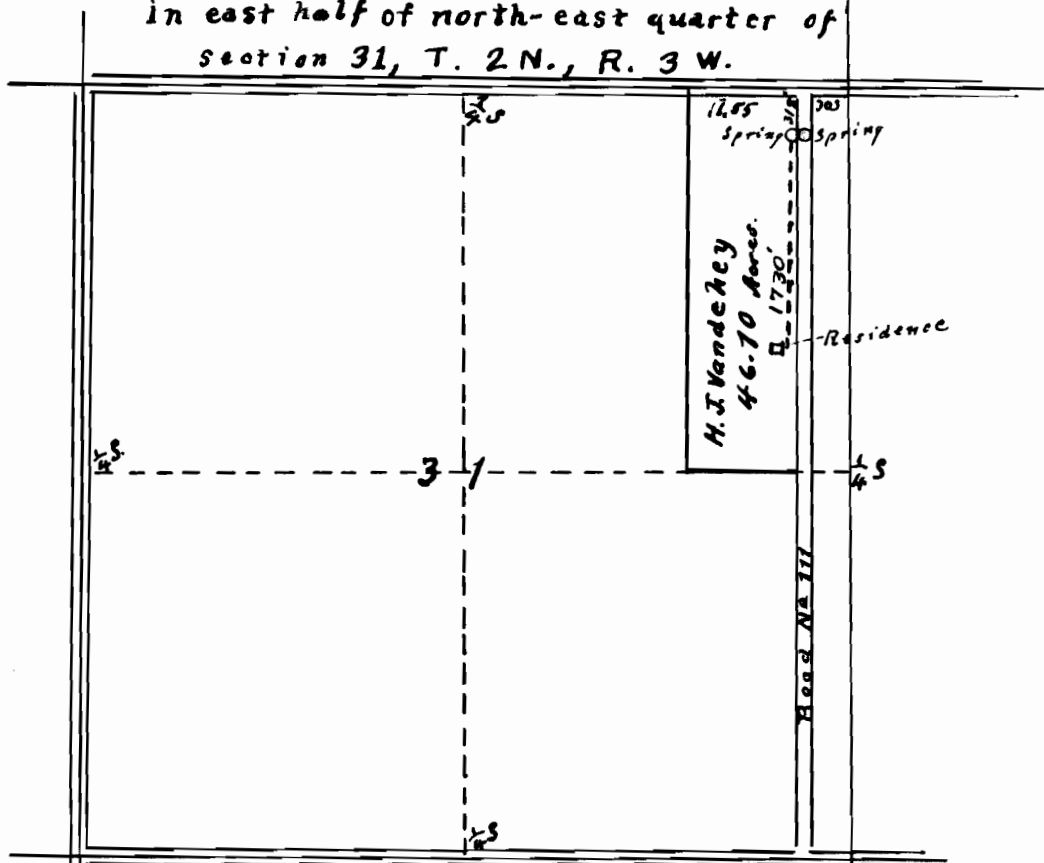
to accompany application of

H. J. Vandehey

to appropriate water from two springs

in east half of north-east quarter of

section 31, T. 2 N., R. 3 W.



Application No. 13181
Permit No. 9433

Scale 20 chains, (1320 ft.) to 1 inch

Permission is hereby granted to
H. J. Vandehey to conduct the water from the
above described spring in Road No 111,
over said road, onto his land and to
appropriate the water thereof to own use.

Done at Hillsboro Oregon This 10th day of December 1929

W. J. Howard County Judge
J. W. Linneman County Commissioner
J. M. Hiatt County Commissioner.