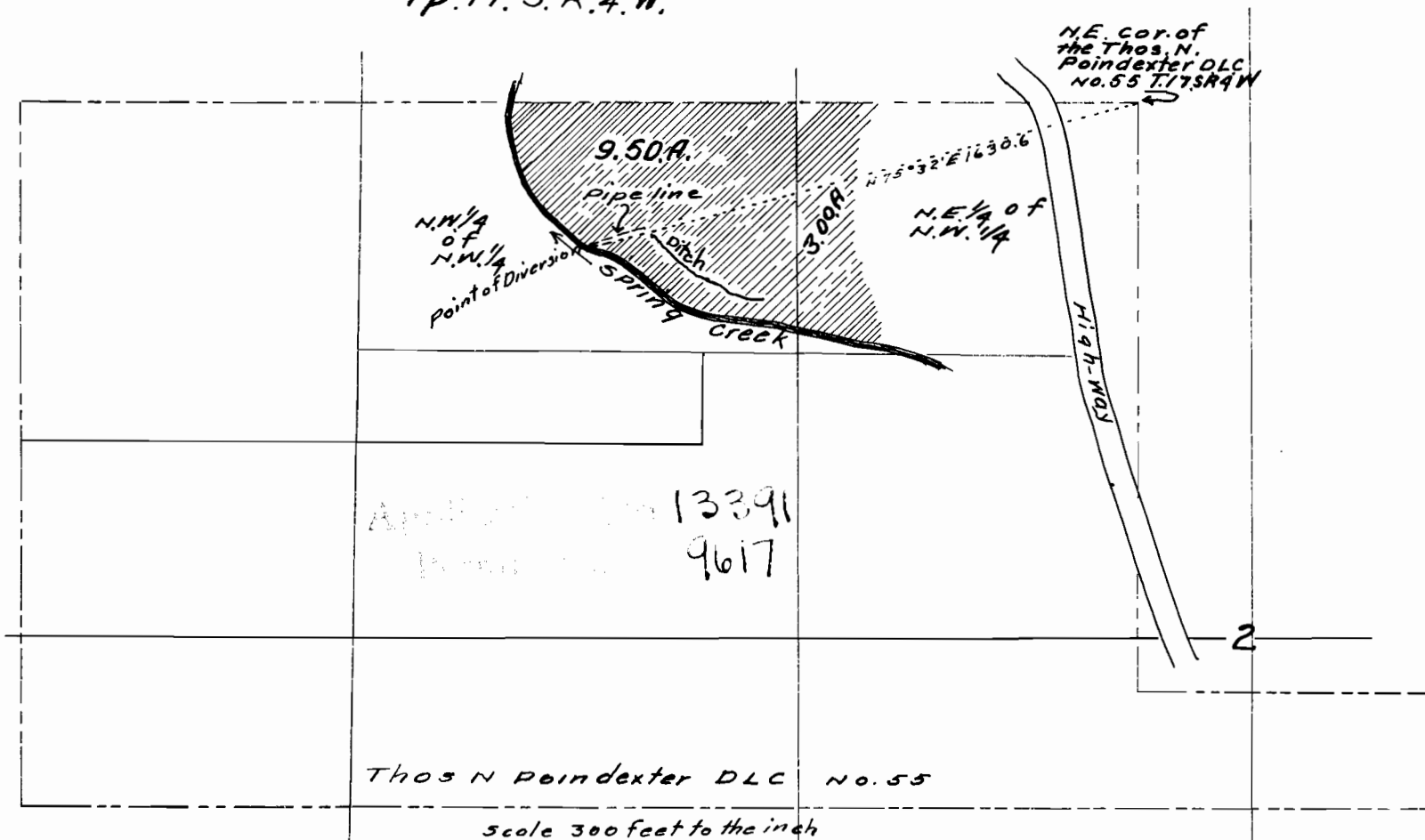


TP. 17. S. R. 4. W.



I, G.H. Waggoner, of Eugene, Oregon, do hereby certify that this map was made by me from notes taken during an actual survey made by me on the 17th. day of April 1930 and that it correctly represents the works described in the accompanying application, together with the location of streams and other ditches in the immediate vicinity

G.H. Waggoner Professional Engineer
Certificate, Oregon, No. 954, Dated Dec. 31. st. 1919.