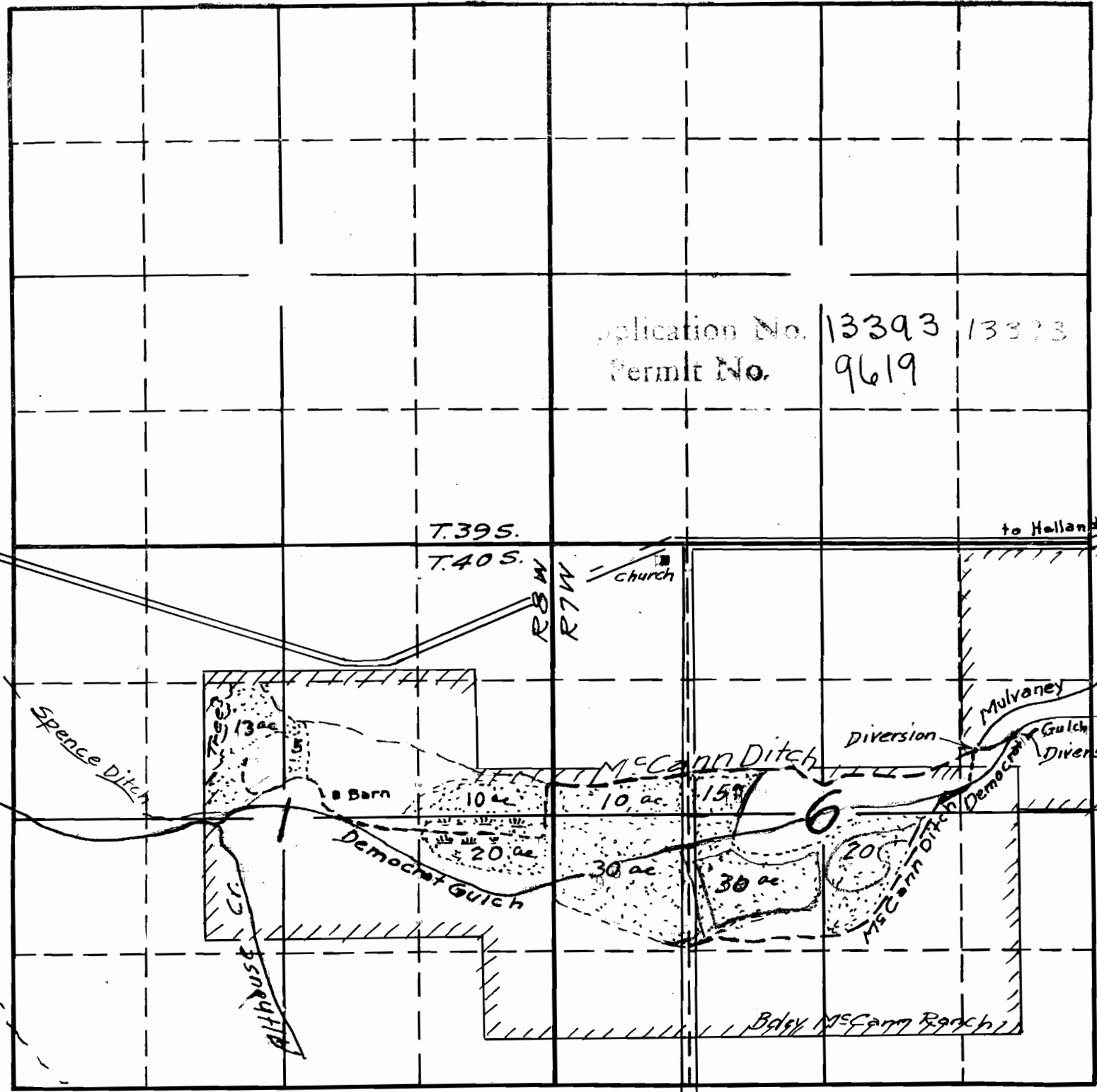


Sec. 6
1
Tp. 40 S
R. 7 + 8 W.
W.M.

Application No. 13393 13393
Permit No. 9619

E. Ft. Illinois River

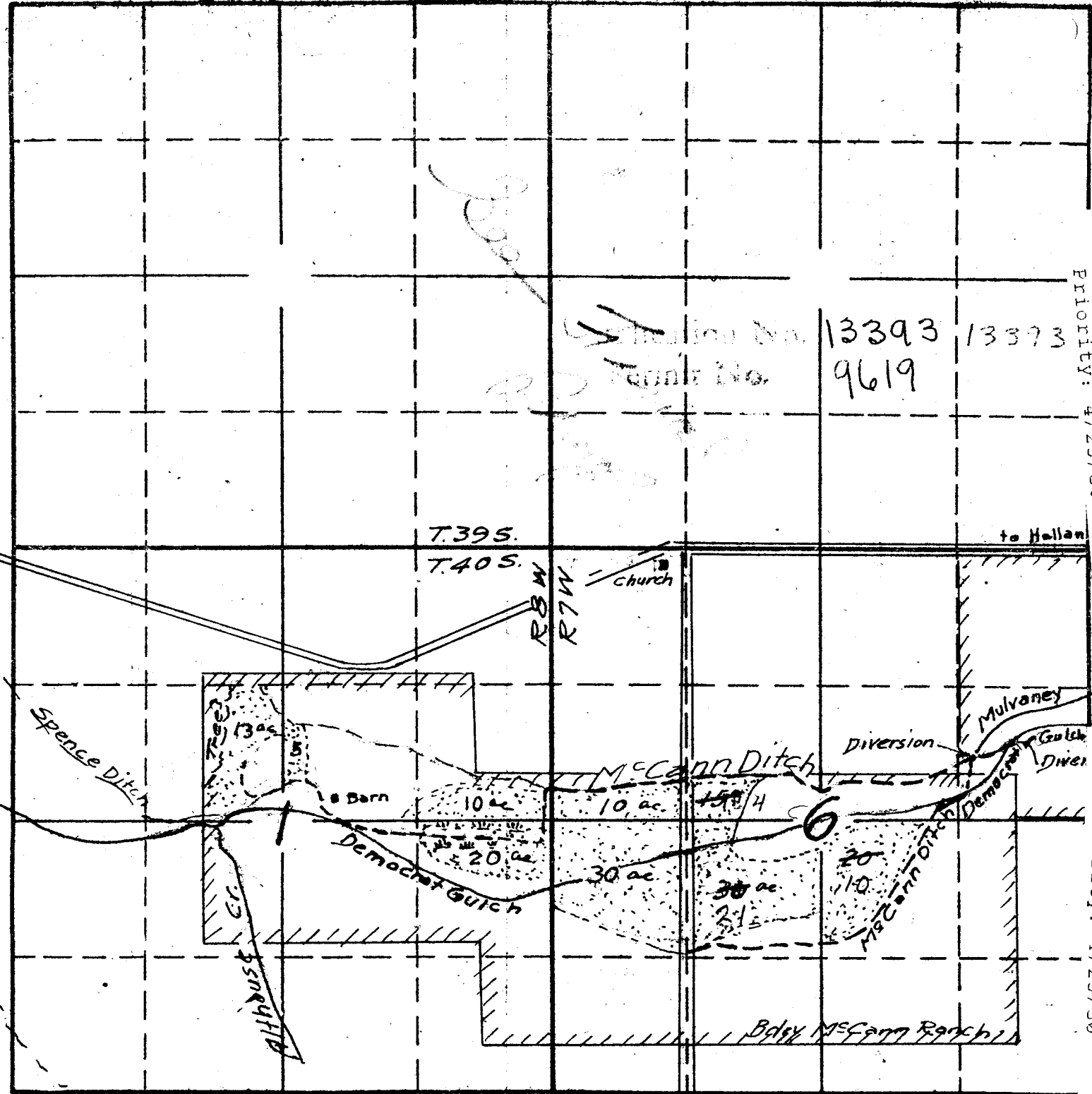


Sec. 6
 T. 40 S.

Permit: S 9619
 Volume: 8
 Stm: MULVANEY G
 Trib: DEMOCRAT G
 Priority: 4/25/30

Permit: S 9619
 Volume: 8
 Stm: DEMOCRAT G
 Trib: ALTHOUSE CR
 Priority: 4/25/30

Section No. 13393 13373
 Cont. No. 9619



E. Fk. Illinois River
 1730