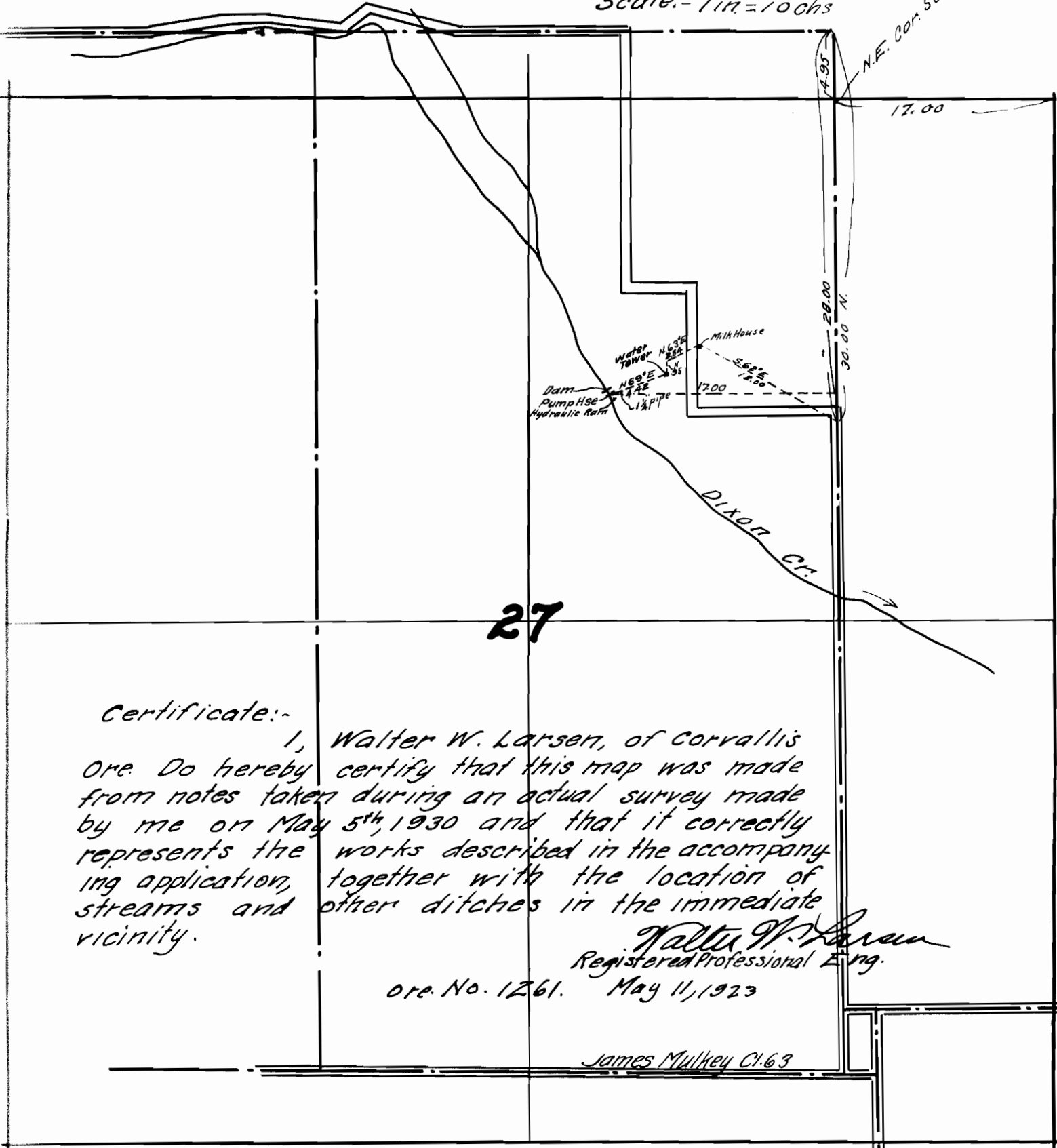


WISE WATER WORKS

T.11S. R.5W. W.M.

Scale: - 1 in. = 100 chs

N.E. Cor. Sec. 27



27

Certificate:-

I, Walter W. Larsen, of Corvallis Ore. Do hereby certify that this map was made from notes taken during an actual survey made by me on May 5th, 1930 and that it correctly represents the works described in the accompanying application, together with the location of streams and other ditches in the immediate vicinity.

Walter W. Larsen
Registered Professional Eng.

Ore. No. 1261. May 11, 1923

James Mulhey C1.63

Application No. 13434
Plan No. 9646