

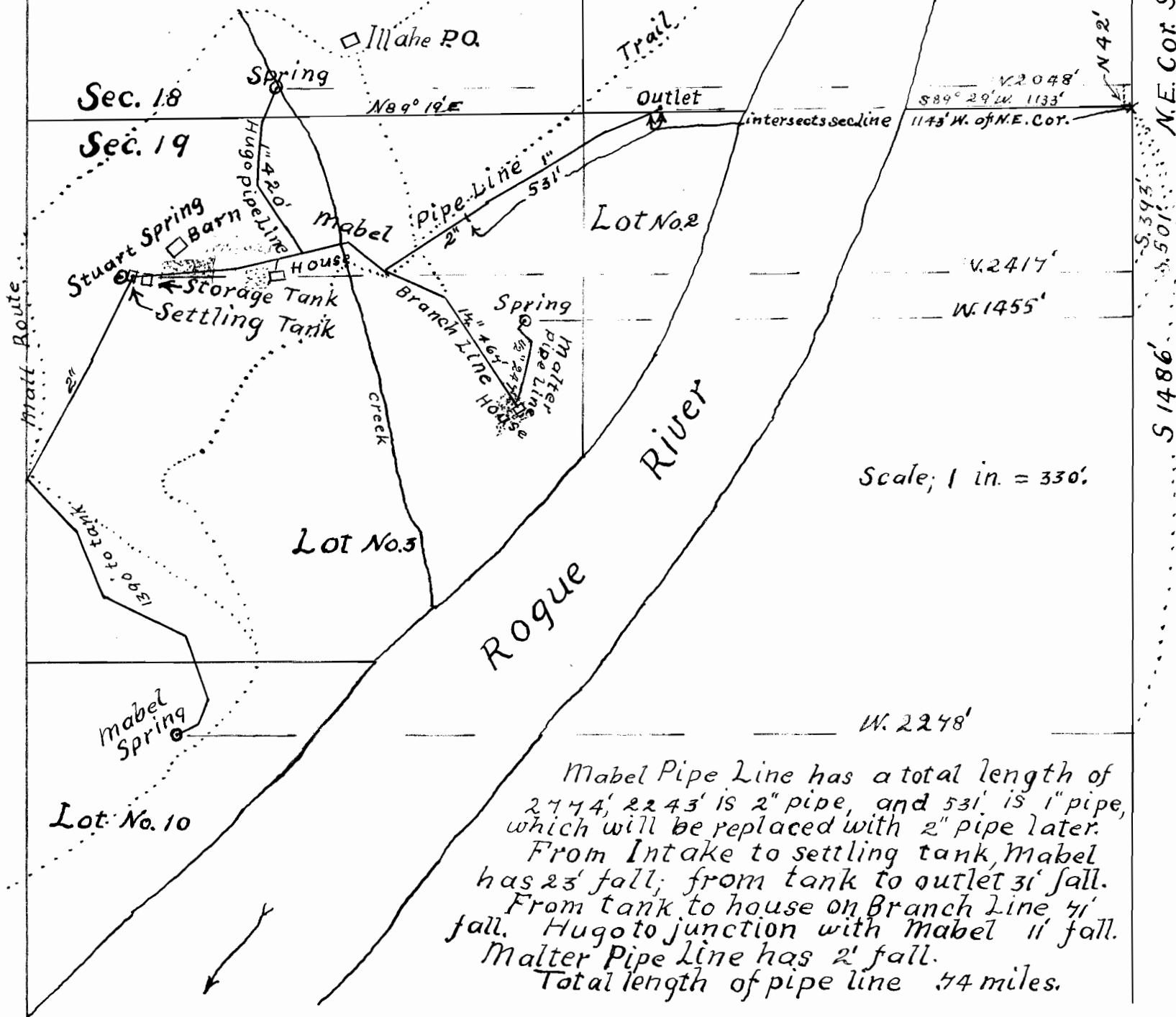
Amended Map  
of  
Henry Clifford Stuart's  
Pipe Lines.

T. 34 S. R. 11 W. W. M.

Lot No. 6

Henry Clifford Stuart.

10 acres  
to be irrigated.



Scale; 1 in. = 330'

Mabel Pipe Line has a total length of 2774', 2243' is 2" pipe, and 531' is 1" pipe, which will be replaced with 2" pipe later.  
From Intake to settling tank, Mabel has 23' fall; from tank to outlet 31' fall.  
From tank to house on Branch Line 41' fall. Hugot to junction with Mabel 11' fall.  
Malters Pipe line has 2' fall.  
Total length of pipe line .54 miles.

R. J. Canfield Surveyor.