

10375

12

7

8

13

18

1/4

2

3.5

7

N

S

SCALE  
4 IN  
ONE MILE

A-13797  
P-9913

CHAS UNICLIME  
Oct 16 1934

T.S. 6. R. 8. W

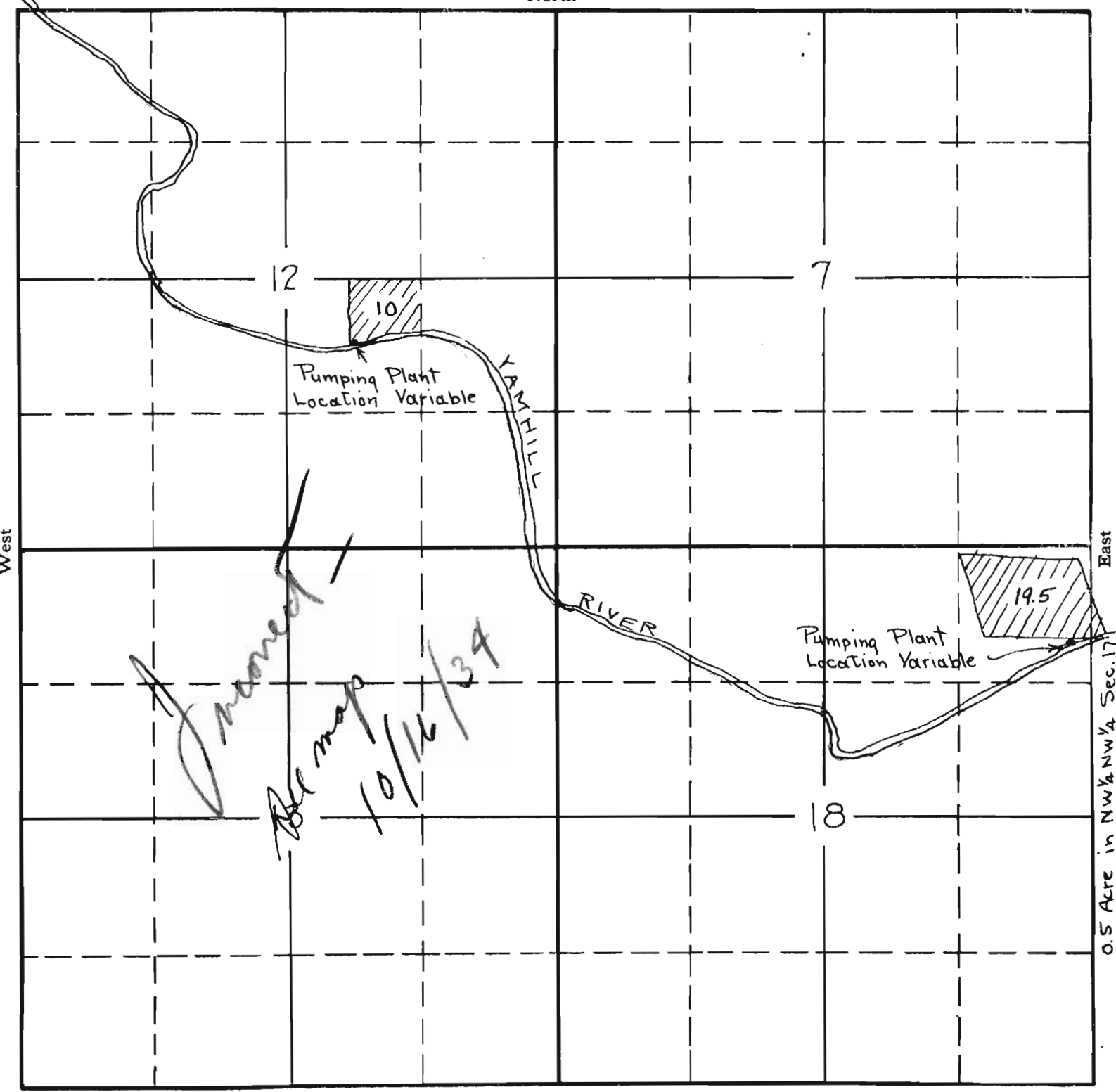
T.S. 6. R. 7 W

SECTION

TOWNSHIP 6S, RANGE 8W, W. M.

7W

North



*Approved*  
*See map*  
*10/16/39*

0.5 Acre in NW 1/4 NW 1/4 Sec. 17

South

APPLICATION No. 13797  
 PERMIT No. 9913