

T9 S. R 40 E. W.M.

N
↑

SKETCH

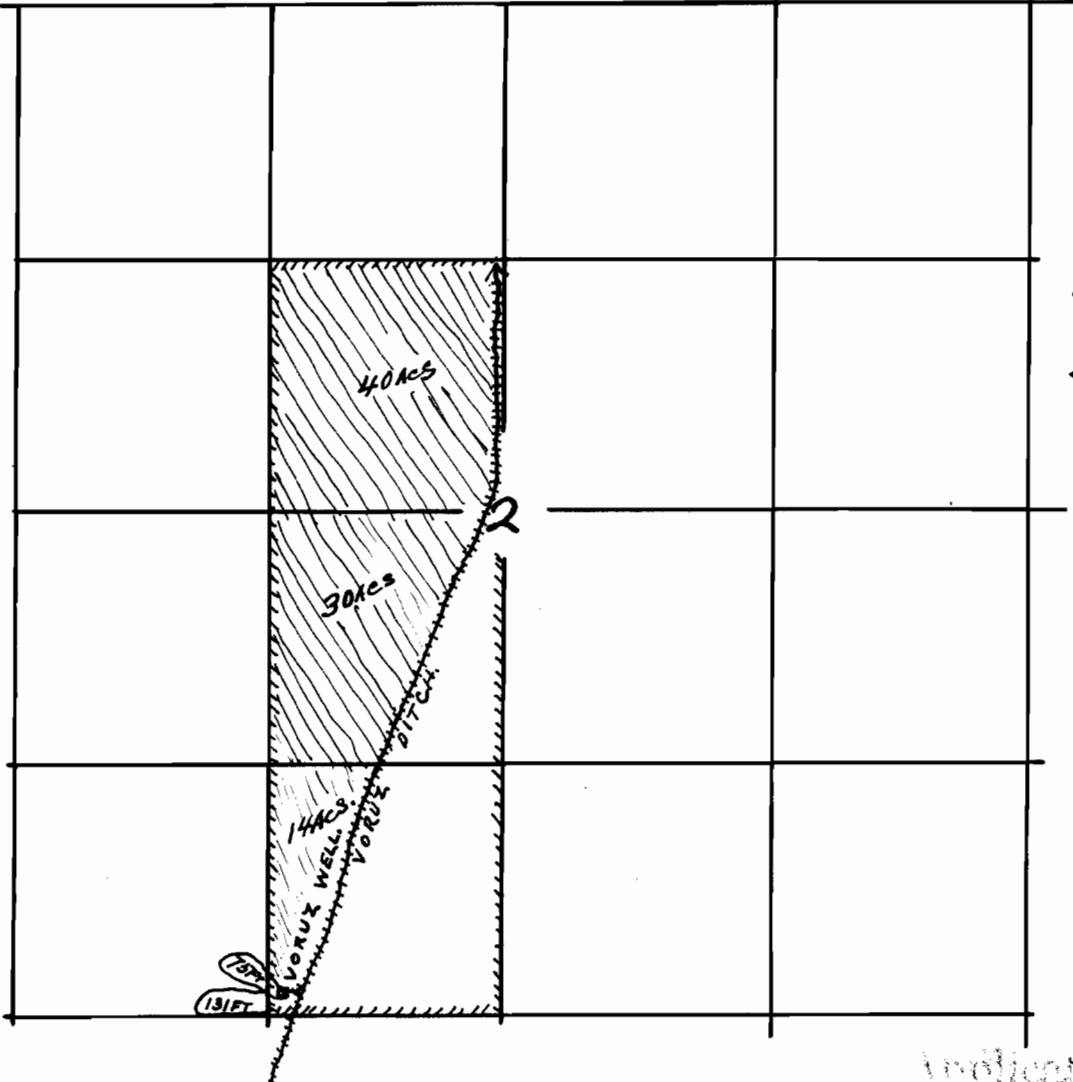
SHOWING

THE LOCATION OF THE
VORUZ LANDS AND WELL
FROM WHICH WATER IS PUM-
PED FOR LATE IRRIGATION +
SITUATED IN SEC. 2, T9 S, R
40 E. W.M., BAKER CO. OREGON.

SCALE, ONE INCH = 1000 FT.

DRAWN, MAY 23, 1929

Ira L. Hoffman
County Surveyor



CERTIFICATE

I, IRA L. HOFFMAN OF BAKER, ORE., DO
HEREBY CERTIFY THAT THIS SKETCH WAS
MADE FROM DATA FURNISHED BY THE AP-
PLICANT AND THAT IT CORRECTLY REPRE-
SENTS THE SAID DATA.

Ira L. Hoffman
County Surveyor.

Application No. U-13

Parcel No. U-13