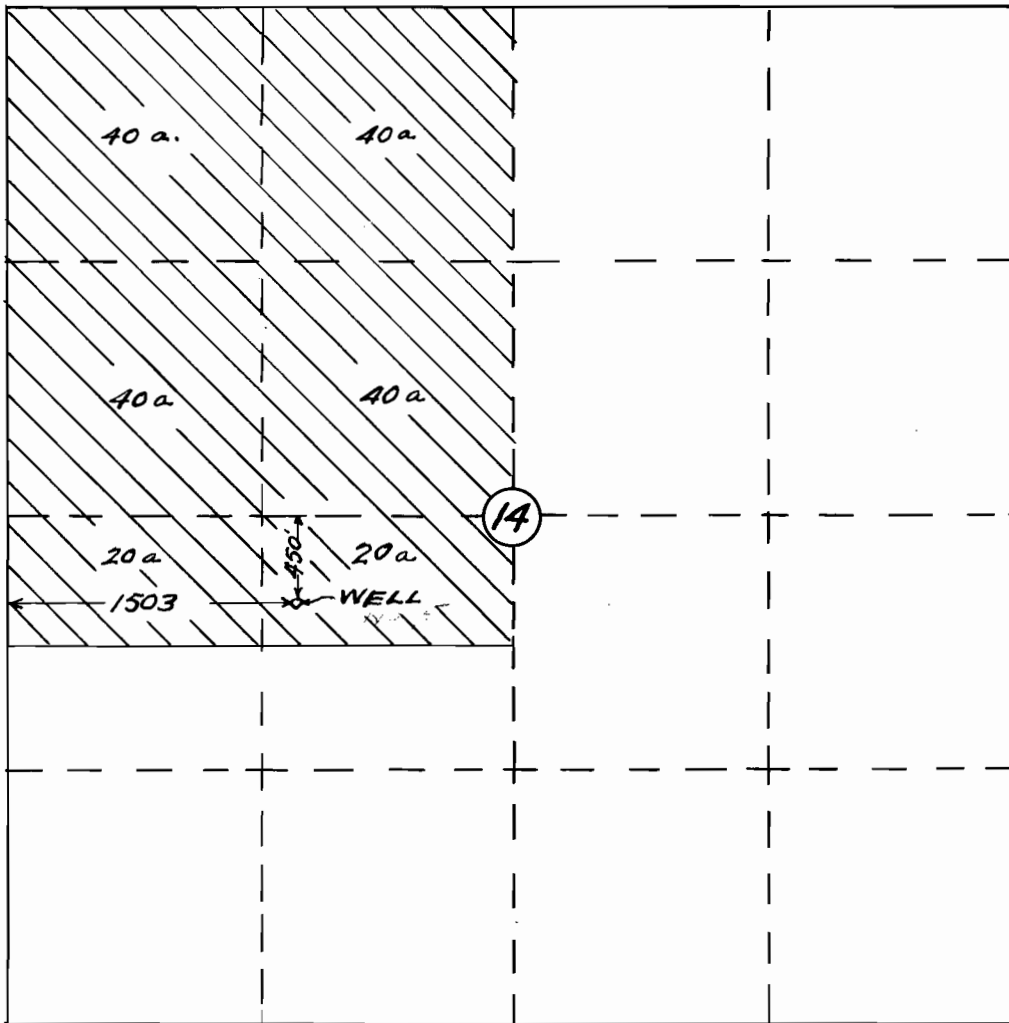


SECTION 14  
TOWNSHIP 15 SOUTH  
RANGE 40 E.V.M



*Walter Sandquist*  
JULY 7, 1944  
WALTER E SANDQUIST  
35

SCALE 1" = 1000'

RANKIN CROW  
MALHEUR COUNTY, OREGON

Application No. U-390  
Permit No. U-359