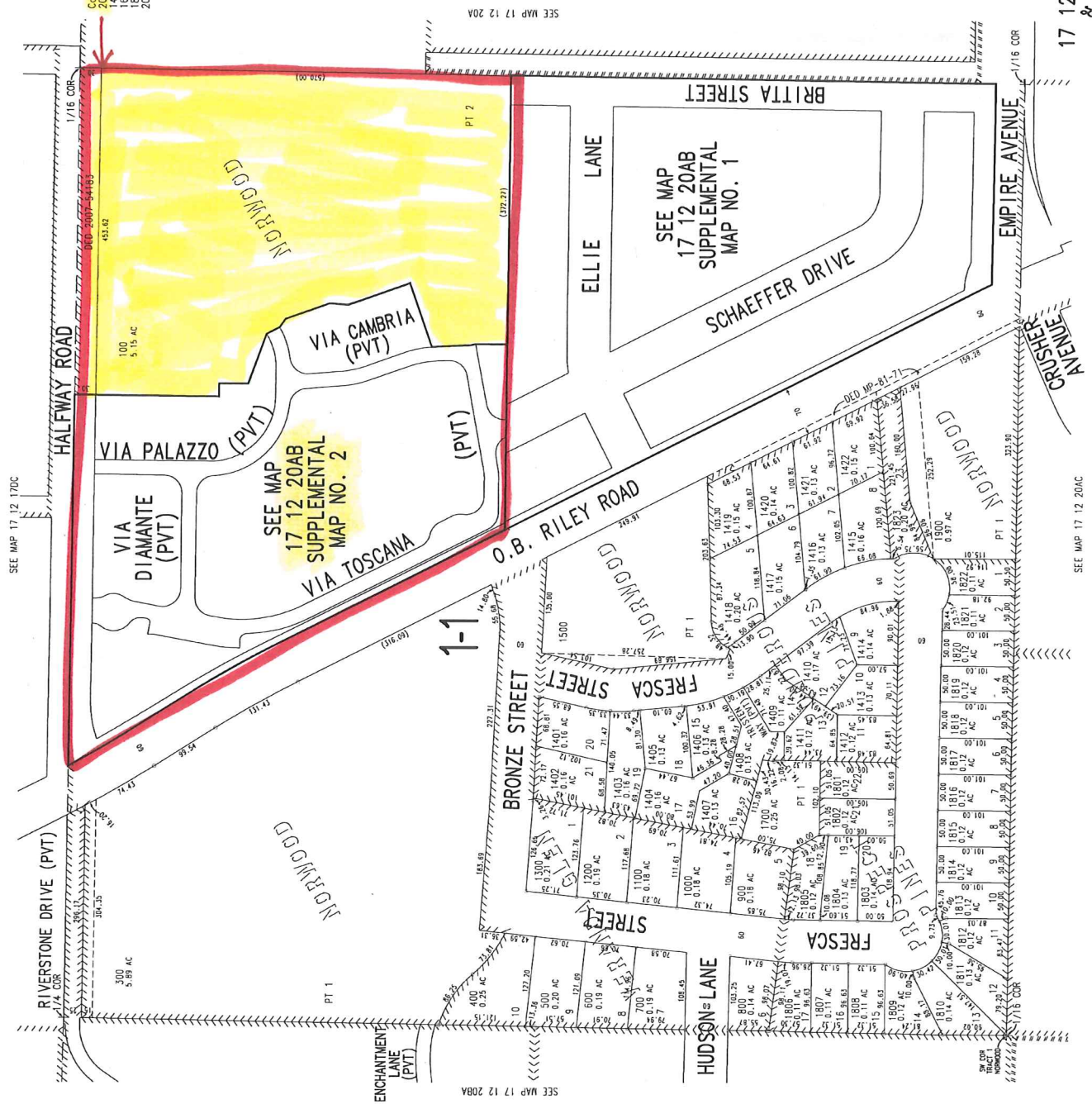


THIS MAP WAS PREPARED FOR
ASSESSMENT PURPOSE ONLY.
REVISED: 10/29/2007

NW1/4 NE1/4 SEC. 20 T. 17S. R. 12E. W.M.
DESCHUTES COUNTY

17 12 20AB
& INDEX

1" = 100'



17 12 20AB
& INDEX

SEE MAP 17 12 20AC

1" = 50'

THIS MAP WAS PREPARED FOR
ASSESSMENT PURPOSE ONLY.
REVISED: 10/29/2007

