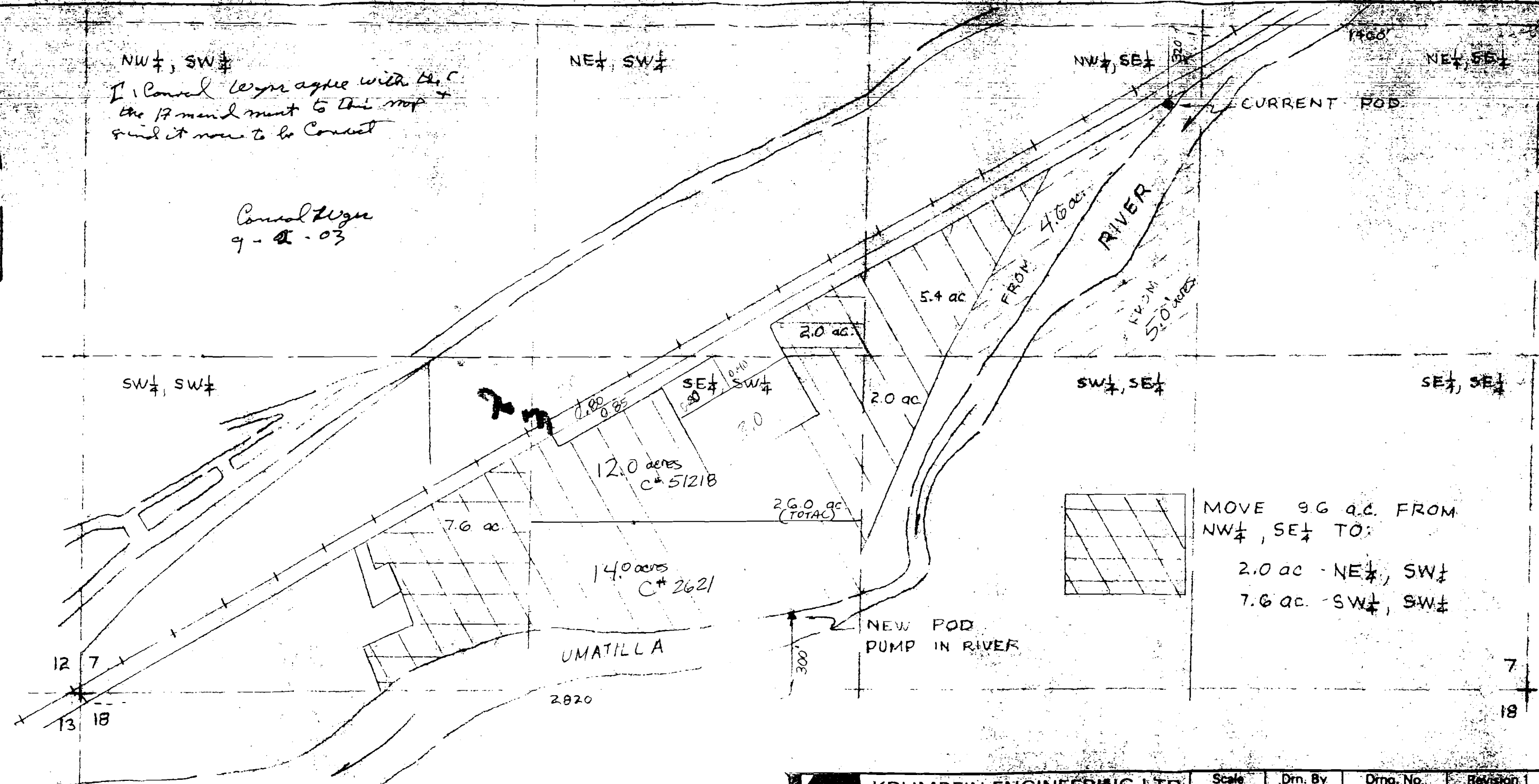


NW 1/4, SW 1/4
 I, Conrad Wyss agree with the
 the 17 amendment to this map
 and it now to be correct

Conrad Wyss
 9-2-03



KRUMBEIN ENGINEERING LTD. ENGINEERS - SURVEYORS - PLANNERS 361 S.E. Second Penetration, Oregon	Scale 1" = 400'	Dwn. By DHK	Orig. No. 9403B	Revision 1 11-8-94
	Date 10-30-94	Ckd. By	Iss. No. 9428	Revision 2 11-2-94

CHANGE IN POINT OF DIVERSION

CONRAD L. WYSS

SECTION 7, T.2N, R.22E.
 UMATILLA COUNTY

6/30/95