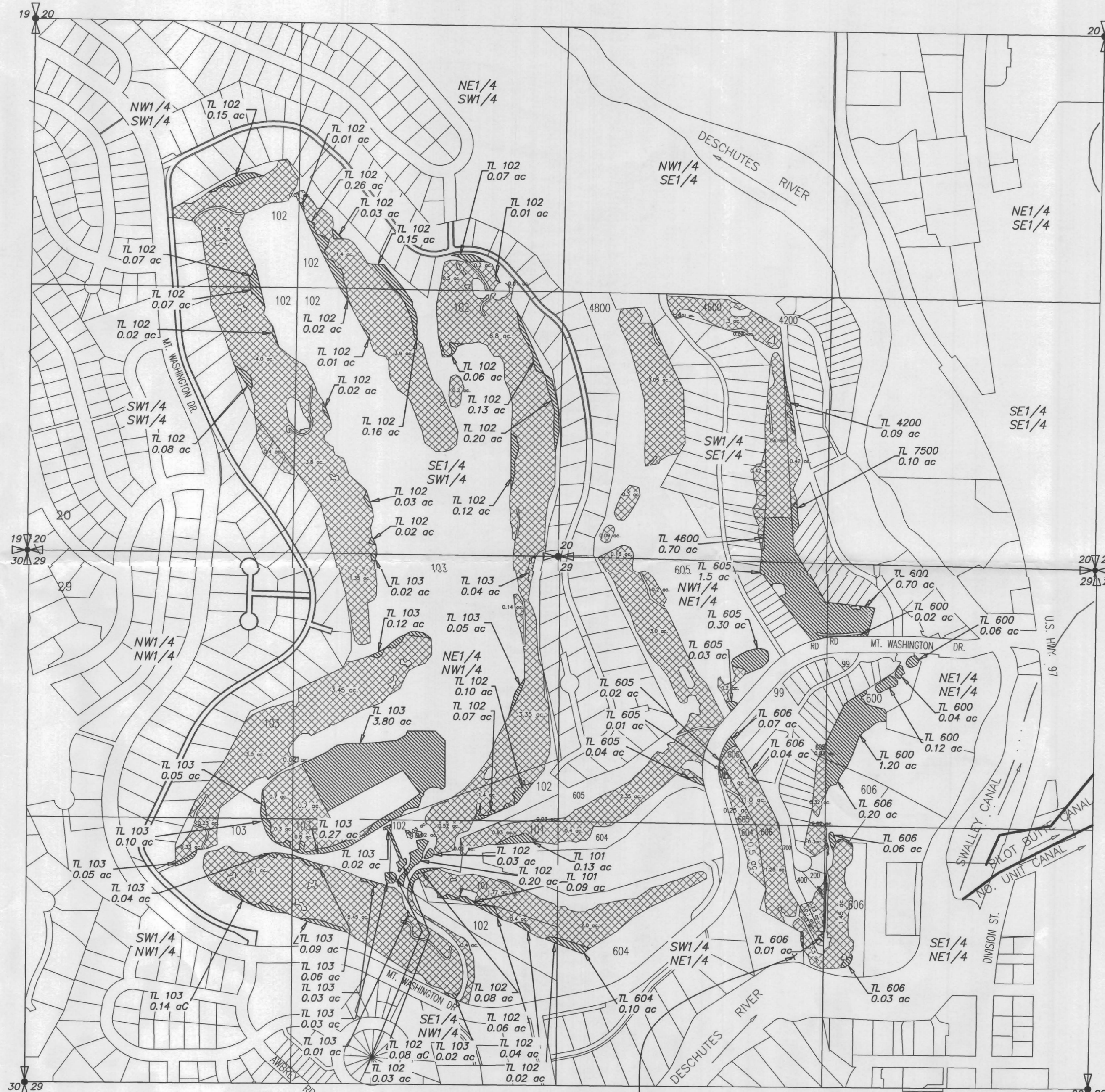


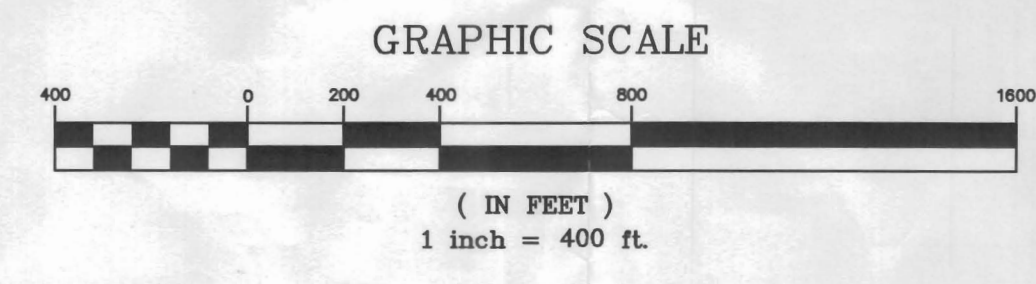
# ON MAP

## COID/RIVERS EDGE INVESTMENTS, LLC

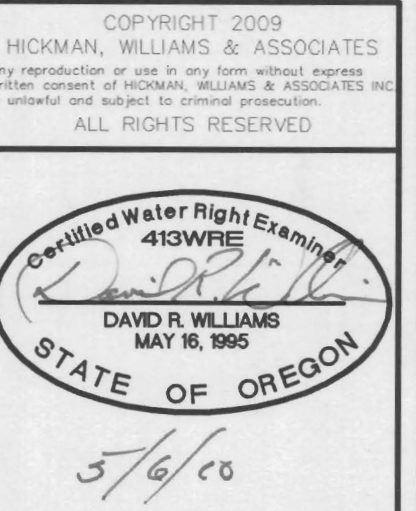
LOCATED IN: NE1/4SW1/4, SE1/4SW1/4, SW1/4SW1/4, NW1/4SW1/4 & SW1/4SE1/4 OF SECTION 20 & NE1/4NW1/4, SE1/4NW1/4, SW1/4NW1/4, NW1/4NW1/4, NE1/4NE1/4, SE1/4NE1/4, SW1/4NE1/4 & NW1/4NE1/4 OF SECTION 29, TOWNSHIP 17 SOUTH, RANGE 12 EAST, W.M., CITY OF BEND, DESCHUTES COUNTY, OREGON



POINT OF DIVERSION  
1980' SOUTH & 1160' EAST  
OF N1/4 OF SECTION 29



- LEGEND:**
- TL 606  
0.12 ac DENOTES TAX LOT NUMBER AND ACREAGE ON
  - HATCH DEPICTS ACREAGE "ON"
  - HATCH DEPICTS EXISTING WATER RIGHTS PRIORITY DATE - 10/31/1900



APPLICATION FOR WATER RIGHTS TRANSFER  
COID/RIVERS EDGE INVESTMENTS, LLC  
LOCATED IN: SECTIONS 20 AND 29  
TOWNSHIP 17 SOUTH, RANGE 12 EAST, W.M.  
CITY OF BEND OREGON

**HWA** SURVEYORS, ENGINEERS & PLANNERS  
HICKMAN, WILLIAMS & ASSOCIATES, INC  
1201 NW WALL STREET, SUITE 100  
BEND OREGON 97701  
PHONE: 541.389.9351 FAX: 541.388.5416  
WWW.HWA-INC.ORG

REVISIONS	
1.	
2.	
3.	

DESIGNED BY:  
DRAWN BY: **DRW**  
CHECKED BY:  
SCALE: **1"=400'**  
FILE: **WR-TRANS\_golf\_course**  
DATE: **4/30/10**

SHEET  
**1 / 1**

RECEIVED  
MAY 14 2010  
WATER RESOURCES DEPT  
SALEM, OREGON

HWA # **RIVERS EDGE**  
**\_CO-GRID**

d:\Land Projects\RIVERS\_EDGE\_CO-GRID\dwg\040926-water\_rights\_WR-TRANS\_golf\_course.dwg Thu May 06, 2010 - 10:20am

