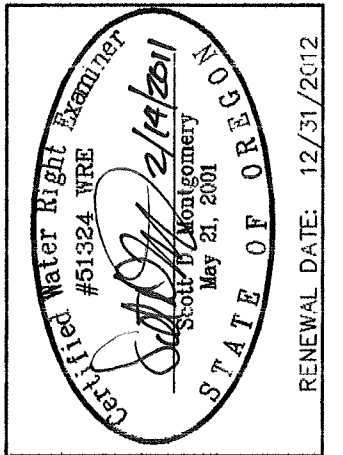


# TRANSFER MAP TO ACCOMPANY APPLICATION TO CHANGE PLACE OF USE & ADD POINTS OF APPROPRIATION FOR COLAHAN ENTERPRISES, LLC

RECEIVED

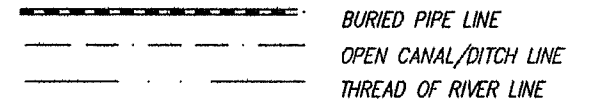
MAR 21 2011

WATER RESOURCES DEPT  
SALEM, OREGON



TAX LOTS 802, 1300, AND 203  
IN SECTIONS 13, 14, 23, AND 24, TOWNSHIP 33 SOUTH, RANGE 18 EAST, W.M.  
LAKE COUNTY, OREGON

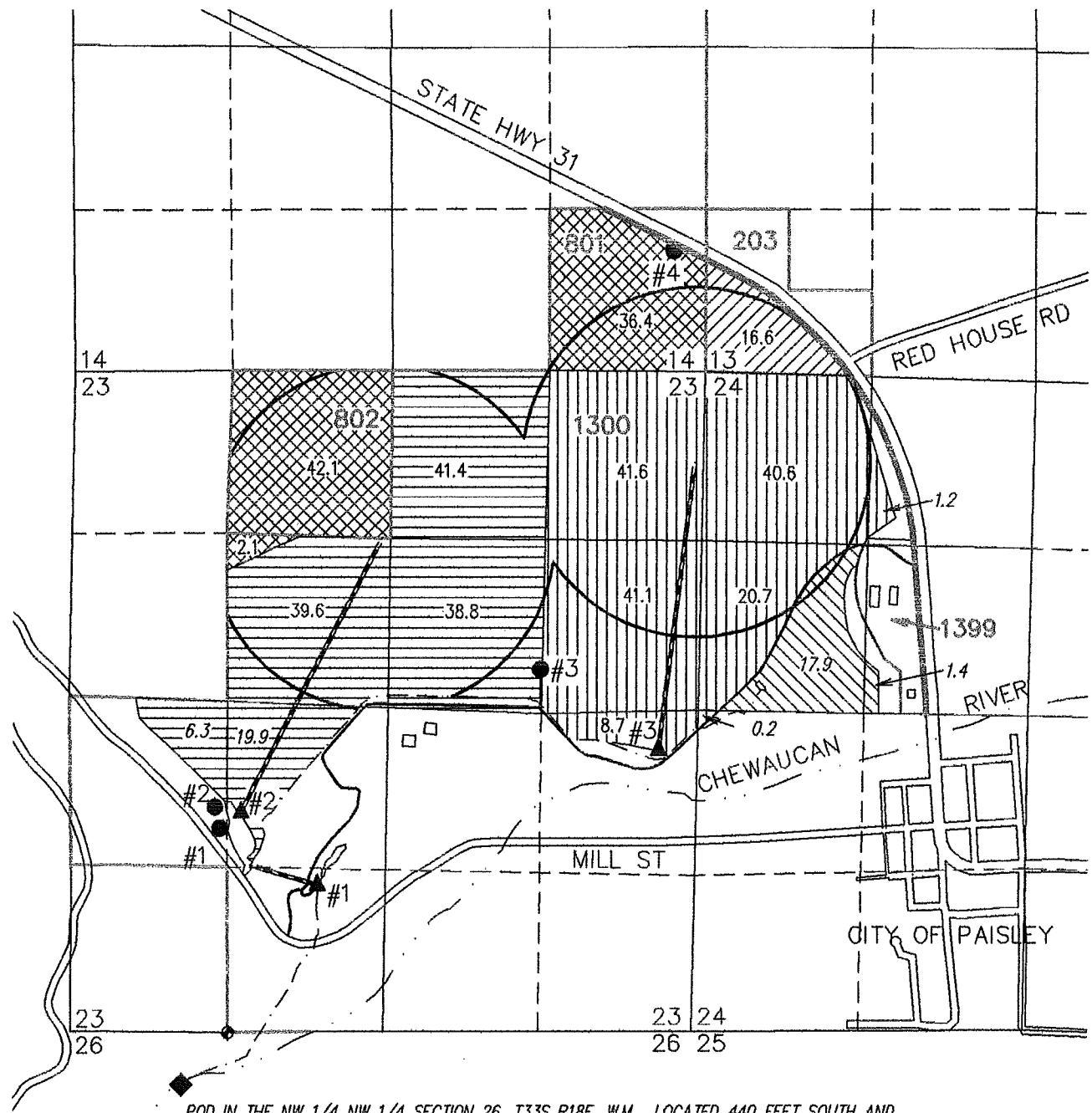
- WELL #1 LAKE 1627 (G9765 & G10059) IN THE NW 1/4 SW 1/4 SECTION 23, T33S R18E, W.M. LOCATED 1680 FEET NORTH AND 1240 FEET EAST FROM THE SW CORNER OF SECTION 23.
- WELL #2 NEW POA IN THE NW 1/4 SW 1/4 SECTION 23, T33S R18E, W.M. LOCATED 1853 FEET NORTH AND 112 FEET WEST FROM THE W 1/16 CORNER OF SECTIONS 23 AND 26.
- WELL #3 LAKE 1628 IN THE SW 1/4 NE 1/4 SECTION 23, T33S R18E, W.M. LOCATED 2987 FEET NORTH AND 2574 FEET EAST FROM THE W 1/16 CORNER OF SECTIONS 23 AND 26.
- WELL #4 LAKE 1625 IN THE SE 1/4 SE 1/4 SECTION 14, T33S R18E, W.M. LOCATED 3682 FEET NORTH AND 6426 FEET EAST FROM THE W 1/16 CORNER OF SECTIONS 23 AND 26.
- ▲ SUMP #1 THREE PUMPS IN THE SE 1/4 SW 1/4 SECTION 23, T33S R18E, W.M.
- ▲ SUMP #2 PUMP FROM POND IN THE NE 1/4 SW 1/4 SECTION 23, T33S R18E, W.M.
- ▲ SUMP #3 PUMP FROM CANAL IN THE NE 1/4 SE 1/4 SECTION 23, T33S R18E, W.M.



◆ FOUND #5 REBAR W/ YPC "PLS 744" ASSUMED TO BE WEST 1/16 CORNER BETWEEN SECTIONS 23 AND 26.

- 80.6 AC PRIMARY WATER RIGHTS FROM C#B2231 (S-48030) AND SUPPLEMENTAL WATER RIGHTS FROM C#B2230 (G-10059) AS SHOWN. PRIORITY DATES OF 9/6/1983 AND 4/19/1983
- 146.0 AC PRIMARY WATER RIGHT FROM C#B1169 (S-31395) AND SUPPLEMENTAL WATER RIGHTS FROM C#64775 (G-9765) AS SHOWN. PRIORITY DATES OF 7/22/1966 AND 4/9/1982
- 154.1 AC PRIMARY WATER RIGHTS FROM C#64777 (S29891) AND SUPPLEMENTAL WATER RIGHTS FROM C#64775 (G-9765) AS SHOWN. PRIORITY DATES OF 4/30/1964 AND 4/9/1982
- 19.3 AC PRIMARY WATER RIGHTS FROM C#64776 (S-45125) AND SUPPLEMENTAL WATER RIGHTS FROM C#64775 (G-9765) AS SHOWN. PRIORITY DATES OF 7/1/1980 AND 4/9/1982
- 16.6 AC PRIMARY WATER RIGHTS FROM C#B2232 (S-49624) AS SHOWN. PRIORITY DATE OF 12/16/1985

THIS MAP IS FOR THE PURPOSE OF LOCATING A WATER RIGHT ONLY AND HAS NO INTENT TO PROVIDE LEGAL DIMENSIONS OR THE LOCATION OF PROPERTY LINES.



POD IN THE NW 1/4 NW 1/4 SECTION 26, T33S R18E, W.M. LOCATED 440 FEET SOUTH AND 925 FEET EAST FROM THE SW CORNER OF SECTION 23.

**ALL POINTS ENGINEERING  
& SURVEYING, INC.**

P.O. BOX 767 (CRR)  
TERREBONNE, OREGON 97760  
(541) 548-5833 PH  
(541) 585-4602 FX  
[www.APEandS.com](http://www.APEandS.com)

PROJECT No. 11-007

PREPARED AT THE REQUEST OF:  
**COLAHAN ENTERPRISES**  
P.O. BOX 300  
PAISLEY, OR 97636

T 11214