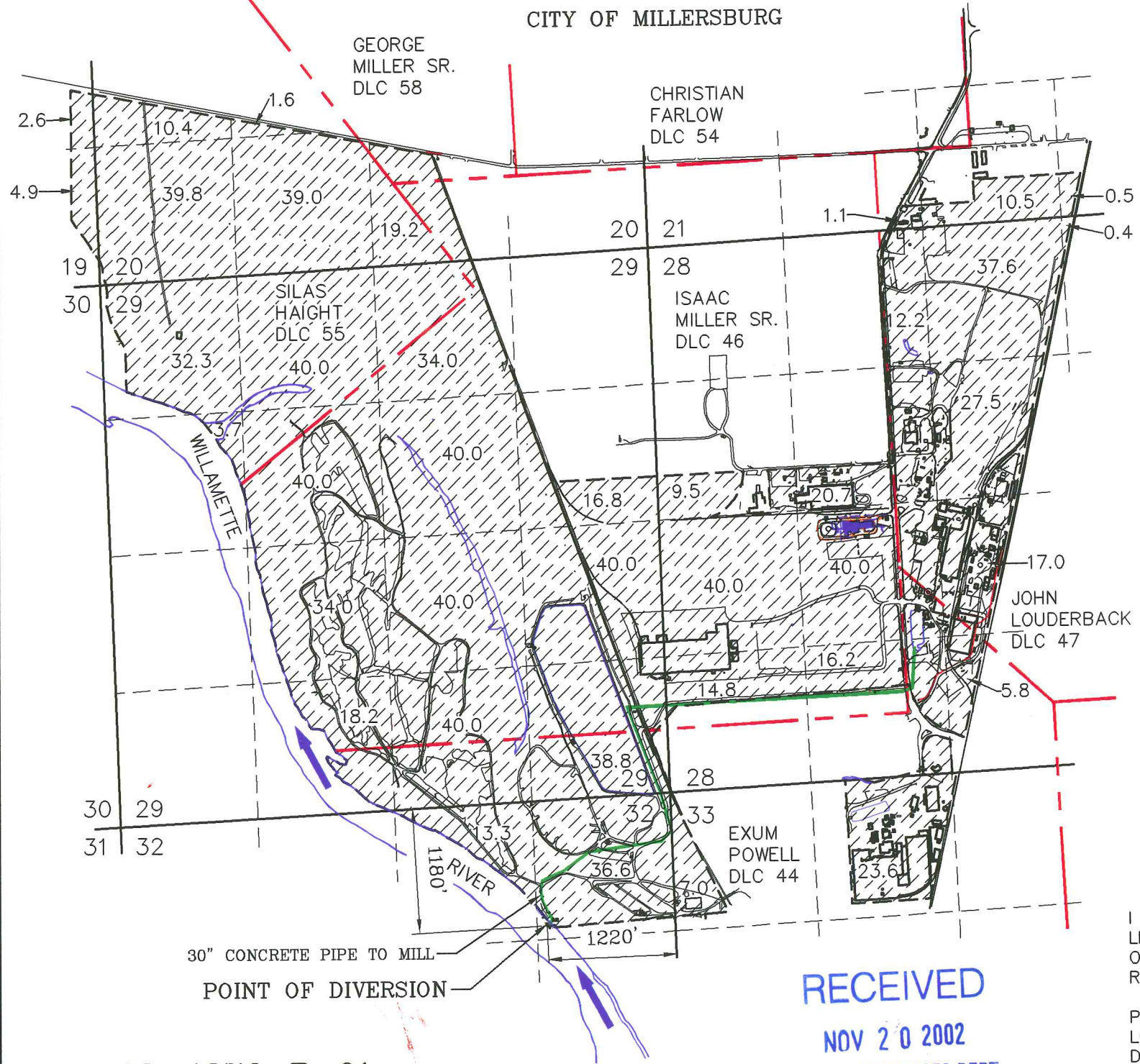


FINAL PROOF MAP FOR WEYERHAEUSER COMPANY FOR INDUSTRIAL USE UNDER T-7526

LOCATED IN
SECTIONS 21, 28, 29, 32 & 33
T.10S., R.3W., W.M.
LINN COUNTY, OREGON
SCALE: 1"=1320'-0"
CITY OF MILLERSBURG



ACREAGE SUMMARY

SECTION 19	— SE 1/4, SE 1/4 NE 1/4, SE 1/4	4.9 ACRES DLC 55 2.6 ACRES DLC 55
SECTION 20	— SW 1/4, SW 1/4 NW 1/4, SW 1/4 SE 1/4, SW 1/4 NE 1/4, SW 1/4 SW 1/4, SE 1/4	39.8 ACRES DLC 55 10.4 ACRES DLC 55 39.0 ACRES DLC 55 0.1 ACRES DLC 58 1.6 ACRES DLC 55 4.0 ACRES DLC 58 5.6 ACRES DLC 46 9.6 ACRES DLC 55
SECTION 21	— SE 1/4, SW 1/4 SW 1/4, SE 1/4 SE 1/4, SE 1/4	1.1 ACRES DLC 47 10.5 ACRES DLC 47 0.5 ACRES DLC 47
SECTION 28	— NW 1/4, NE 1/4 NE 1/4, NW 1/4 NE 1/4, NE 1/4 SW 1/4, NE 1/4 SE 1/4, NW 1/4 NW 1/4, SE 1/4 SW 1/4, SE 1/4 NE 1/4, SW 1/4 SE 1/4, SW 1/4	37.6 ACRES DLC 47 12.2 ACRES DLC 47 0.4 ACRES DLC 47 27.5 ACRES DLC 47 12.2 ACRES DLC 47 8.5 ACRES DLC 46 16.0 ACRES DLC 47 1.0 ACRES DLC 44 5.8 ACRES DLC 44 4.5 ACRES DLC 44 7.4 ACRES DLC 47 28.1 ACRES DLC 46 8.5 ACRES DLC 44 9.9 ACRES DLC 46 9.5 ACRES DLC 46 4.5 ACRES DLC 44 7.4 ACRES DLC 47 28.1 ACRES DLC 46 8.5 ACRES DLC 44 9.9 ACRES DLC 46 9.5 ACRES DLC 46 4.5 ACRES DLC 44 7.4 ACRES DLC 47
SECTION 29	— SE 1/4, NW 1/4 NE 1/4, SE 1/4 SE 1/4, SE 1/4 NW 1/4, NE 1/4 SW 1/4, NE 1/4 NW 1/4, SE 1/4 SW 1/4, SE 1/4 NE 1/4, NW 1/4 SE 1/4, NW 1/4 NE 1/4, SW 1/4 SE 1/4, SW 1/4 NW 1/4, NW 1/4 SW 1/4, NW 1/4	16.8 ACRES DLC 46 40.0 ACRES DLC 46 21.0 ACRES DLC 46 17.8 ACRES DLC 44 20.2 ACRES DLC 46 13.8 ACRES DLC 55 40.0 ACRES DLC 46 40.0 ACRES DLC 46 20.9 ACRES DLC 46 19.1 ACRES DLC 44 1.4 ACRES DLC 46 38.6 ACRES DLC 55 7.0 ACRES DLC 55 33.0 ACRES DLC 46 34.0 ACRES DLC 46 12.6 ACRES DLC 46 5.6 ACRES DLC 44 32.3 ACRES DLC 55 3.7 ACRES DLC 55
SECTION 32	— NW 1/4, NE 1/4 NE 1/4, NE 1/4	13.3 ACRES DLC 44 36.6 ACRES DLC 44
SECTION 33	— NW 1/4, NW 1/4 NE 1/4, NW 1/4	7.0 ACRES DLC 44 23.6 ACRES DLC 44

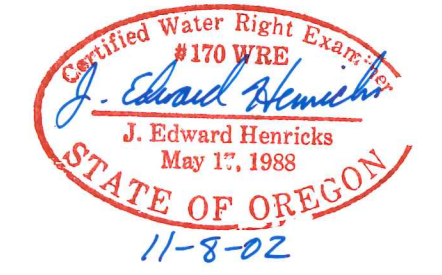
871.9 ACRES TOTAL

LEGEND:

- SECTION LINES
- - - FORTY LINES
- - - DONATION LAND CLAIM LINES
- - - APPROXIMATE PROPERTY LINE
- /// = AREA TO BE COVERED BY TRANSFER OF WATER RIGHTS 871.9 ACRES

I J. EDWARD HENRICKS, BEING DULY SWORN AS A WATER RIGHT EXAMINER LICENSE NO. 170, HAVE PREPARED THIS MAP FOR WEYERHAEUSER COMPANY ON THIS 8th DAY OF NOVEMBER, 2002. THE AREAS HATCHURED REPRESENT THE AREAS APPLIED TO BENEFICIAL USE.

PREPARATION OF THIS MAP IS FOR THE PURPOSE OF IDENTIFYING THE LOCATION OF THE WATER RIGHT ONLY AND HAS NO INTENT TO PROVIDE DIMENSIONS OR LOCATION OF PROPERTY OWNERSHIP LINES.



ONLY DOCUMENTS STAMPED WITH RED INK ARE ORIGINALS.

MISC-02-4276-P-01

RECEIVED
NOV 20 2002
WATER RESOURCES DEPT.
SALEM, OREGON

**FINAL PROOF MAP FOR WEYERHAEUSER COMPANY
FOR INDUSTRIAL USE UNDER T-7526**

LOCATED IN
SECTIONS 21, 28, 29, 32 & 33
T.10S., R.3W., W.M.
LINN COUNTY, OREGON
SCALE: 1"=1320'-0"
CITY OF MILLERSBURG

COBU MAP #

0353

MAP AMENDED
NOVEMBER 6, 2006

20f3

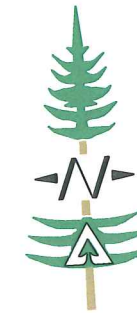
ACREAGE SUMMARY

SECTION 19	—SE 1/4, SE 1/4	4.9 ACRES DLC 55
	NE 1/4, SE 1/4	2.6 ACRES DLC 55
SECTION 20	—SW 1/4, SW 1/4	39.8 ACRES DLC 55
	NW 1/4, SW 1/4	10.4 ACRES DLC 55
	SE 1/4, SW 1/4	39.0 ACRES DLC 55
		0.1 ACRES DLC 58
	NE 1/4, SW 1/4	1.6 ACRES DLC 55
	SW 1/4, SE 1/4	4.0 ACRES DLC 58
		5.6 ACRES DLC 46
		9.6 ACRES DLC 55
SECTION 21	—SE 1/4, SW 1/4	1.1 ACRES DLC 47
	SW 1/4, SE 1/4	10.5 ACRES DLC 47
	SE 1/4, SE 1/4	0.5 ACRES DLC 47
SECTION 28	—NW 1/4, NE 1/4	37.6 ACRES DLC 47
	NE 1/4, NW 1/4	12.2 ACRES DLC 47
	NE 1/4, NE 1/4	0.4 ACRES DLC 47
	SW 1/4, NE 1/4	27.5 ACRES DLC 47
	SE 1/4, NW 1/4	12.2 ACRES DLC 47
		8.5 ACRES DLC 46
	NW 1/4, SE 1/4	16.0 ACRES DLC 47
		1.0 ACRES DLC 44
	SW 1/4, SE 1/4	5.8 ACRES DLC 44
	NE 1/4, SW 1/4	4.5 ACRES DLC 44
		7.4 ACRES DLC 47
		28.1 ACRES DLC 46
		8.5 ACRES DLC 44
		9.9 ACRES DLC 46
	SW 1/4, NW 1/4	9.5 ACRES DLC 46
	NW 1/4, SW 1/4	40.0 ACRES DLC 46
	SW 1/4, SW 1/4	14.8 ACRES DLC 46
SECTION 29	—SE 1/4, NW 1/4	16.8 ACRES DLC 46
	NE 1/4, SE 1/4	40.0 ACRES DLC 46
	SE 1/4, SE 1/4	21.0 ACRES DLC 46
		17.8 ACRES DLC 44
	NW 1/4, NE 1/4	20.2 ACRES DLC 46
		13.8 ACRES DLC 55
	SW 1/4, NE 1/4	40.0 ACRES DLC 46
	NW 1/4, SE 1/4	40.0 ACRES DLC 46
	SW 1/4, SE 1/4	20.9 ACRES DLC 46
		19.1 ACRES DLC 44
	NE 1/4, NW 1/4	1.4 ACRES DLC 46
		38.6 ACRES DLC 55
	SE 1/4, NW 1/4	7.0 ACRES DLC 55
		33.0 ACRES DLC 46
	NE 1/4, SW 1/4	34.0 ACRES DLC 46
	SE 1/4, SW 1/4	12.6 ACRES DLC 46
		5.6 ACRES DLC 44
	NW 1/4, NW 1/4	32.3 ACRES DLC 55
	SW 1/4, NW 1/4	3.7 ACRES DLC 55
SECTION 32	—NW 1/4, NE 1/4	13.3 ACRES DLC 44
	NE 1/4, NE 1/4	36.6 ACRES DLC 44
SECTION 33	—NW 1/4, NW 1/4	7.0 ACRES DLC 44

RECEIVED

JAN 12 2007

WATER RESOURCES DEPT
SALEM, OREGON



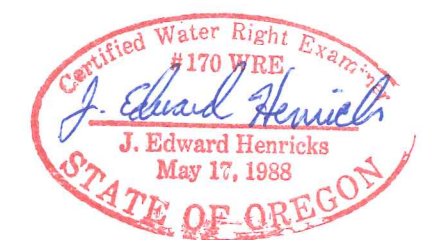
LEGEND:

- SECTION LINES
- - - FORTY LINES
- - - DONATION LAND CLAIM LINES
- - - APPROXIMATE PROPERTY LINE
- /// = AREA TO BE COVERED BY TRANSFER OF WATER RIGHTS 848.3 ACRES

I J. EDWARD HENRICKS, BEING DULY SWORN AS A WATER RIGHT EXAMINER LICENSE NO. 170, HAVE PREPARED THIS MAP FOR WEYERHAEUSER COMPANY ON THIS 8th DAY OF NOVEMBER, 2002. THE AREAS HATCHURED REPRESENT THE AREAS APPLIED TO BENEFICIAL USE.

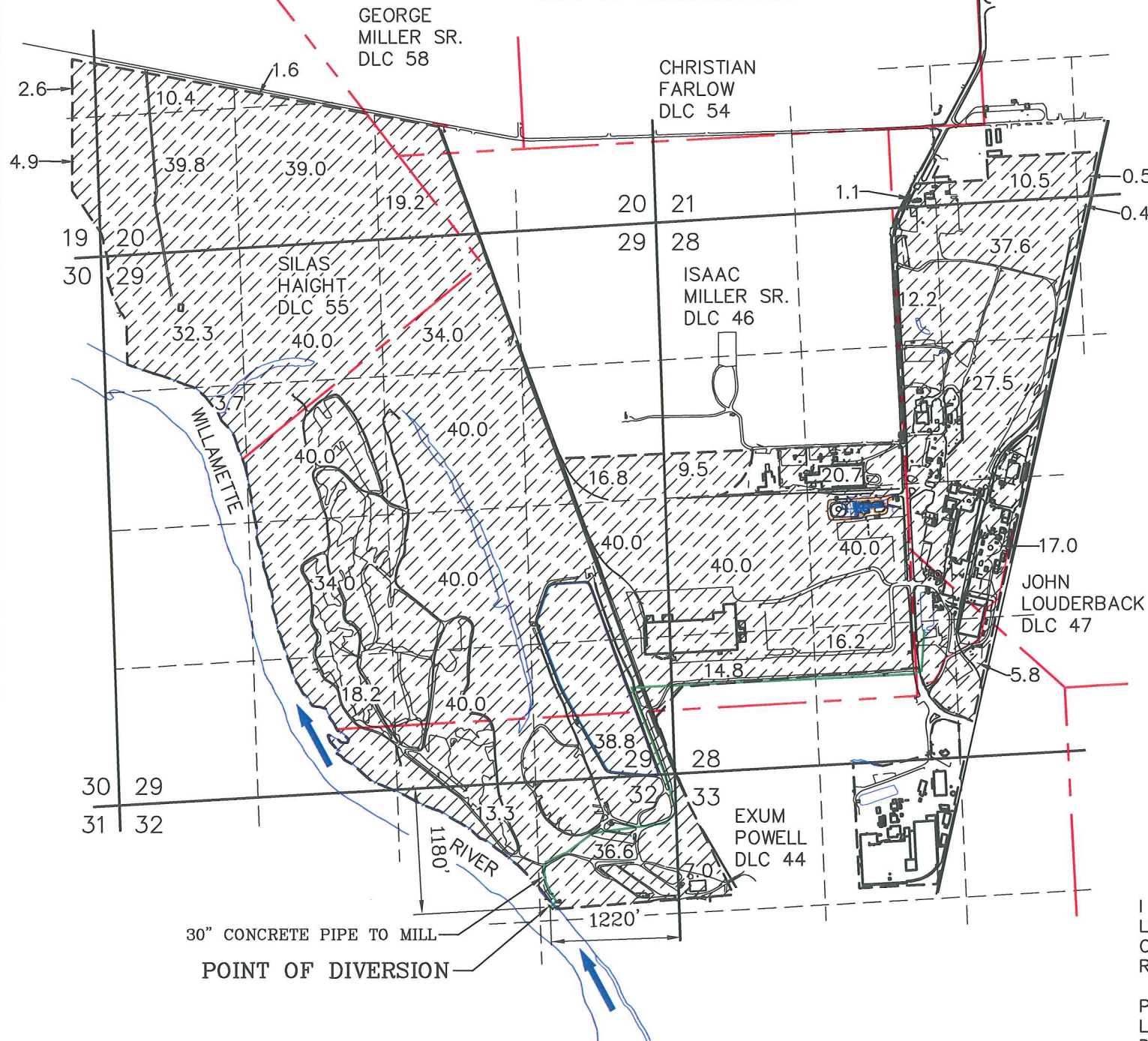
PREPARATION OF THIS MAP IS FOR THE PURPOSE OF IDENTIFYING THE LOCATION OF THE WATER RIGHT ONLY AND HAS NO INTENT TO PROVIDE DIMENSIONS OR LOCATION OF PROPERTY OWNERSHIP LINES.

848.3 ACRES TOTAL



RENEWAL DATE 6/30/07

ONLY DOCUMENTS STAMPED WITH RED INK ARE ORIGINALS.



MISC-02-4276-P-01 REV. 1

MAP AMENDED
NOVEMBER 6, 2006

COBU MAP #
0353
2 of 3

**FINAL PROOF SURVEY
FOR WILLAMETTE INDUSTRIES, INC.
ALBANY PAPERMILL**

LOCATED IN
SECTIONS 28 & 33
T.10S., R.3W., W.M.
LINN COUNTY, OREGON

RECEIVED

JAN 12 2007

WATER RESOURCES DEPT
SALEM, OREGON

SCALE: 1"=1320'-0"
PERMIT NO. 47184 APPLICATION 64514
TRANSFER 7508 - PERMIT AMENDMENT

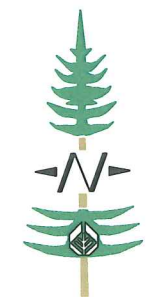
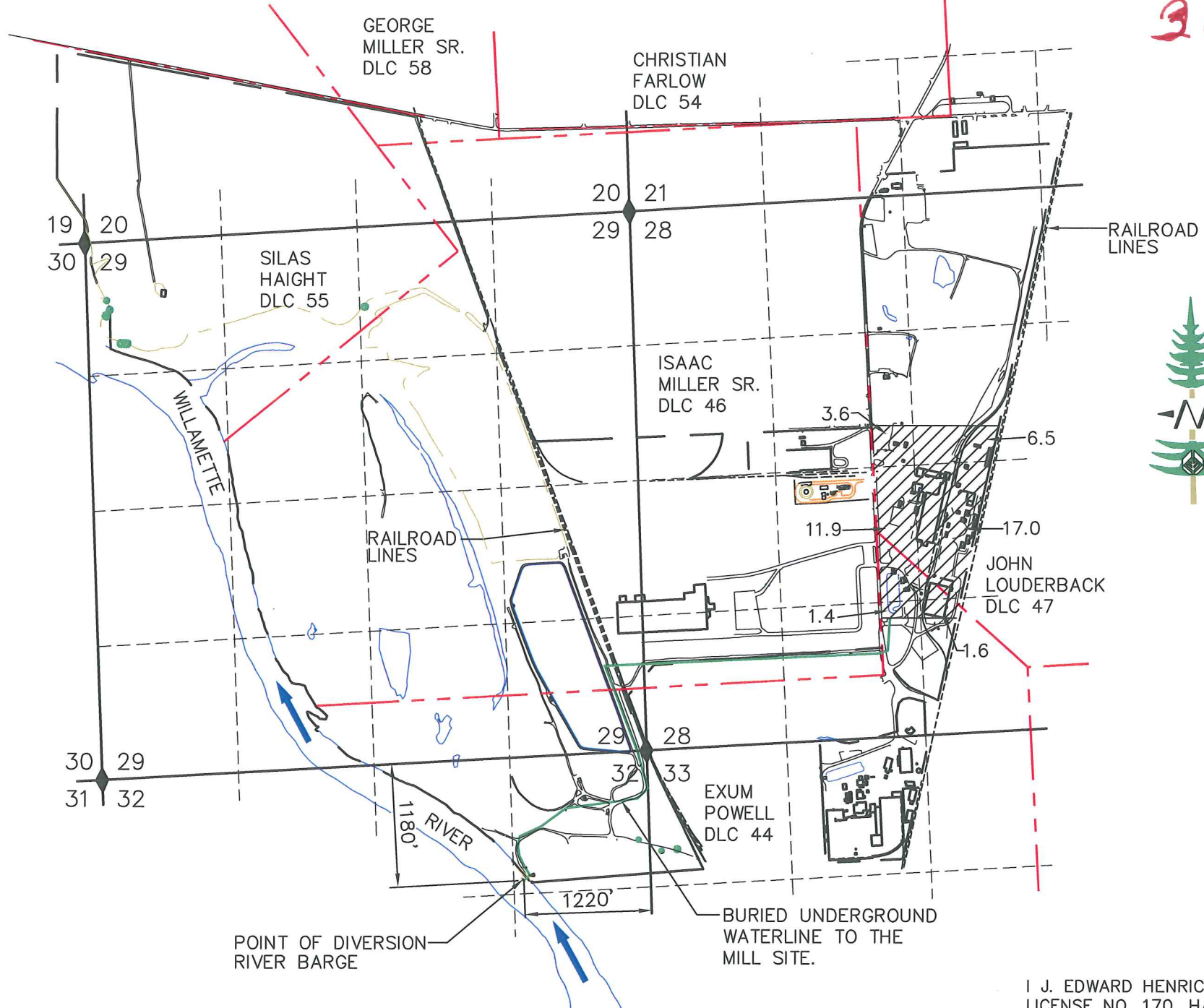
ACREAGE SUMMARY

SECTION 28 — SW 1/4, NE 1/4	6.5 ACRES DLC 47
SE 1/4, NW 1/4	3.6 ACRES DLC 47
NW 1/4, SE 1/4	16.0 ACRES DLC 47
	1.0 ACRES DLC 44
SW 1/4, SE 1/4	1.6 ACRES DLC 44
NE 1/4, SW 1/4	4.5 ACRES DLC 44
	7.4 ACRES DLC 47
SE 1/4, SW 1/4	1.4 ACRES DLC 46

42.0 ACRES TOTAL

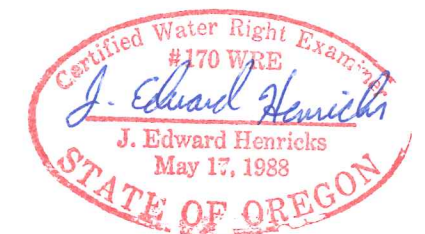
LEGEND:

- = SECTION LINES
- - - = FORTY LINES
- · - · - = DONATION LAND CLAIM LINES
- - - - - = APPROXIMATE PROPERTY LINE
- = BURIED WATERLINE TO THE MILL SITE
- /// = AREA BEING USED UNDER PERMIT NO. 47184 APPLICATION 64514 & T-7508. 42.0 ACRES TOTAL.



I J. EDWARD HENRICKS, BEING DULY SWORN AS A WATER RIGHT EXAMINER LICENSE NO. 170, HAVE PREPARED THIS MAP FOR WILLAMETTE INDUSTRIES, INC. ON THIS 3rd DAY OF SEPTEMBER 1997. THE AREAS HATCHURED REPRESENT THE AREAS BEING APPLIED TO BENEFICIAL USE..

PREPARATION OF THIS MAP IS FOR THE PURPOSE OF IDENTIFYING THE LOCATION OF THE WATER RIGHT ONLY AND HAS NO INTENT TO PROVIDE DIMENSIONS OR LOCATION OF PROPERTY OWNERSHIP LINES.



RENEWAL DATE 6/30/07

ONLY DOCUMENTS STAMPED WITH RED INK ARE ORIGINALS.