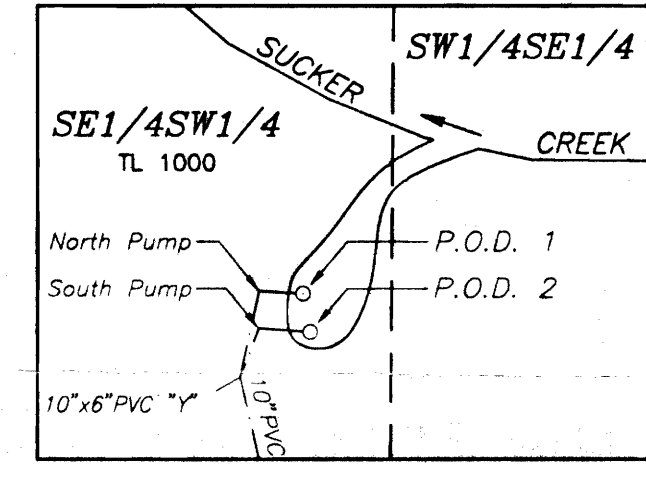
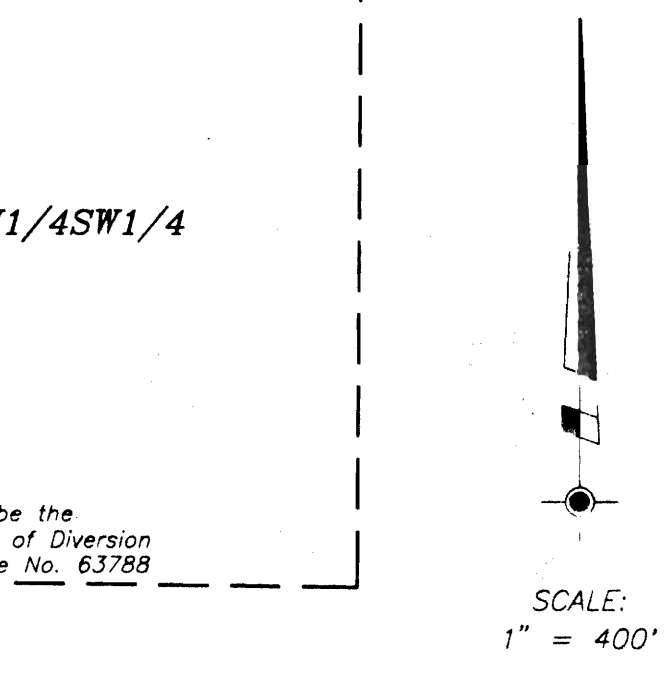
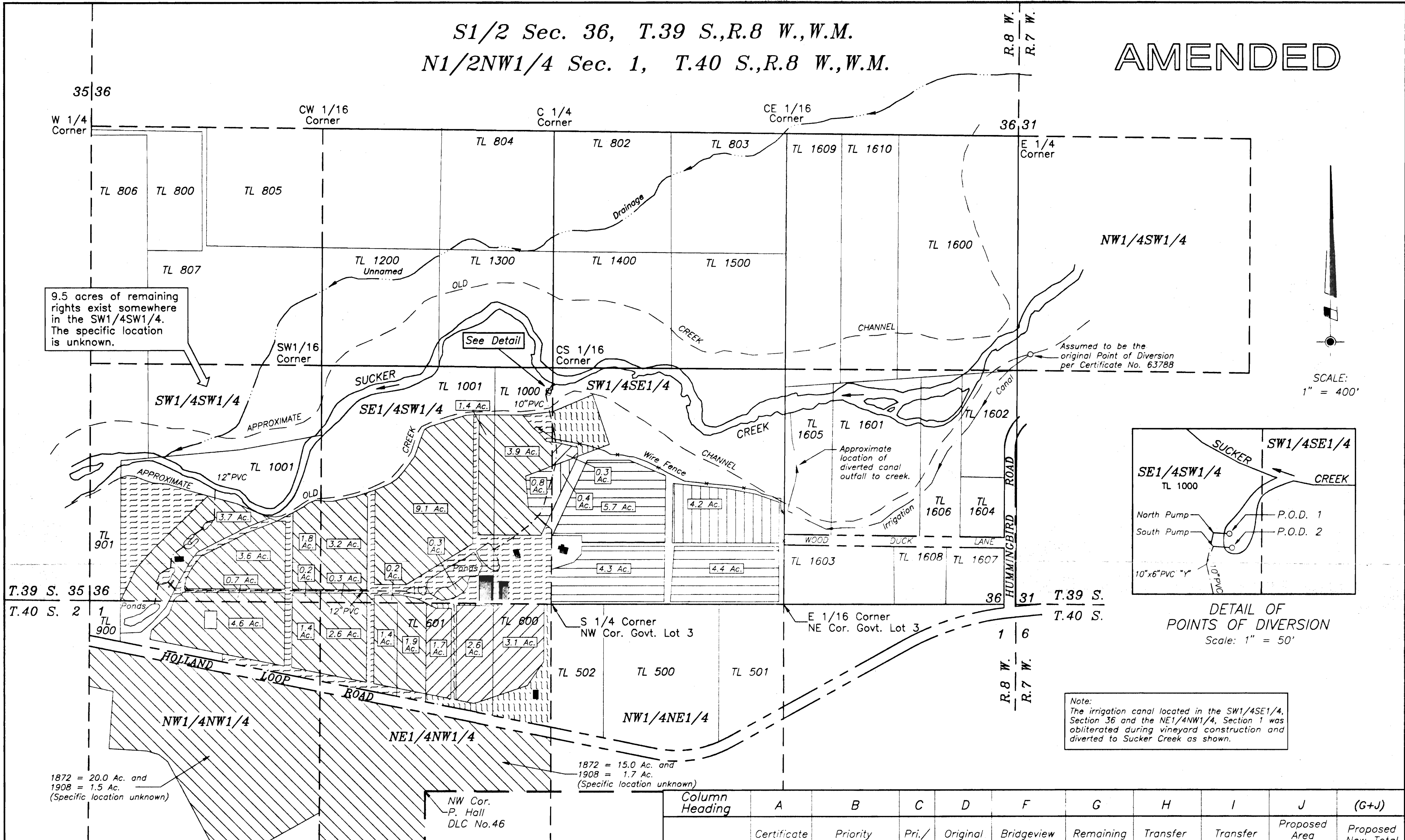


S1/2 Sec. 36, T.39 S.,R.8 W.,W.M.  
 N1/2NW1/4 Sec. 1, T.40 S.,R.8 W.,W.M.

AMENDED



DETAIL OF POINTS OF DIVERSION  
 Scale: 1" = 50'

Note:  
 The irrigation canal located in the SW1/4SE1/4, Section 36 and the NE1/4NW1/4, Section 1 was obliterated during vineyard construction and diverted to Sucker Creek as shown.

- LEGEND:**
- Existing Place of Use (100.0 Acres) per Certificate No. 7148 (Priority Date = 1872)
  - Transfer From (15.2 Acres) per Certificate No. 7148 (Priority Date = 1872)
  - Transfer To (15.2 Acres) per Certificate No. 7148 (Priority Date = 1872)
  - Existing Place of Use (15.5 Acres) per Certificate No. 7148 (Priority Date = 1908)
  - Transfer From (4.6 Acres) per Certificate No. 7148 (Priority Date = 1908)
  - Transfer To (4.6 Acres) per Certificate No. 7148 (Priority Date = 1908)

Existing Building (Approximate location)

Existing Underground Pipeline (sizes as shown) (Approximate location)

Assumed original Point of Diversion per Certificate No. 63788 is located in the NW1/4SW1/4, Sec. 31, T.39S.,R.7W.,W.M.; Irrigation Canal - 1420'N & 75'E from SW cor., Sec. 31

Proposed Primary Points of Diversion per this Application

P.O.D. 1 23'W & 1211'N from SE cor. of SE1/4SW1/4 Sec. 36, being within SE1/4SW1/4, Sec. 36, T.39S.,R.8W.,W.M.

P.O.D. 2 21'W & 1201'N from SE cor. of SE1/4SW1/4 Sec. 36, being within SE1/4SW1/4, Sec. 36, T.39S.,R.8W.,W.M.

This plat was prepared for the purpose of identifying the location of the water right only. There is no intent to provide dimensions or locations of property ownership lines.

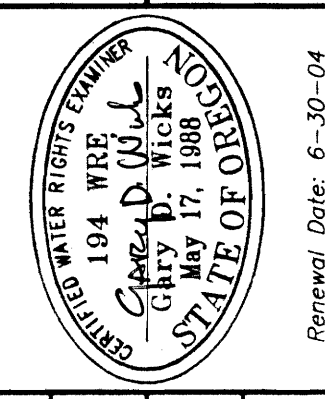
Column Heading	A	B	C	D	F	G	H	I	J	(G+J)
	Certificate No.	Priority Date	Pri./Sup.	Original Area	Bridgeview Property	Remaining Properties	Transfer From	Transfer To	Proposed Area (Bridgeview)	Proposed New Total
<b>Section 36</b>										
T.39 S., R.8 W.										
SW1/4SW1/4	7148	1872	P	25.0 Ac.	15.5 Ac.	9.5 Ac.	5.5 Ac.		10.0 Ac.	19.5 Ac.
SE1/4SW1/4	7148	1872	P	26.0 Ac.	26.0 Ac.		7.6 Ac.	0.8 Ac.	19.2 Ac.	19.2 Ac.
SW1/4SE1/4	7148	1872	P					14.4 Ac.	14.4 Ac.	14.4 Ac.
		1908	P	2.0 Ac.	2.0 Ac.			1.7 Ac.	4.6 Ac.	4.9 Ac.
<b>Section 1</b>										
T.40 S., R.8 W.										
NE1/4NW1/4	7148	1872	P	22.0 Ac.	7.0 Ac.	15.0 Ac.	1.1 Ac.		5.9 Ac.	20.9 Ac.
	7148	1908	P	12.0 Ac.	10.3 Ac.	1.7 Ac.	2.9 Ac.		7.4 Ac.	9.1 Ac.
NW1/4NW1/4	7148	1872	P	27.0 Ac.	7.0 Ac.	20.0 Ac.	1.0 Ac.		6.0 Ac.	26.0 Ac.
	7148	1908	P	1.5 Ac.		1.5 Ac.				1.5 Ac.
<b>TOTALS:</b>		1872	P	100.0 Ac.	55.5 Ac.	44.5 Ac.	15.2 Ac.	15.2 Ac.	55.5 Ac.	100.0 Ac.
		1908	P	15.5 Ac.	12.3 Ac.	3.2 Ac.	4.6 Ac.	4.6 Ac.	12.3 Ac.	15.5 Ac.

WATER RIGHT APPLICATION  
 AND TRANSFER MAP

SURVEYED BY:  
 WICKS ENGINEERING & SURVEYING  
 311 N.E. "D" Street  
 Grants Pass, Oregon 97526  
 Tel. (541) 479-3436

LOCATED IN  
 S1/2 Sec. 36, T.39 S.,R.8 W.,W.M. &  
 N1/2NW1/4 Sec. 1, T.40 S.,R.8 W.,W.M.  
 Josephine County, Oregon

SURVEYED FOR:  
 BRIDGEVIEW VINEYARDS WINERY  
 4210 Holland Loop Road  
 Cave Junction, OR 97523  
 Tel. (541) 592-4688



PROJECT NO. 566-98-383  
 DRAWING NO. (REVISED) 301-18.24  
 DATE Nov. 11, 1998  
 Revision No. 4 - 10-11-08  
 SCALE 1" = 400'

SHEET NO. 1 of 1

Renewal Date: 6-30-04