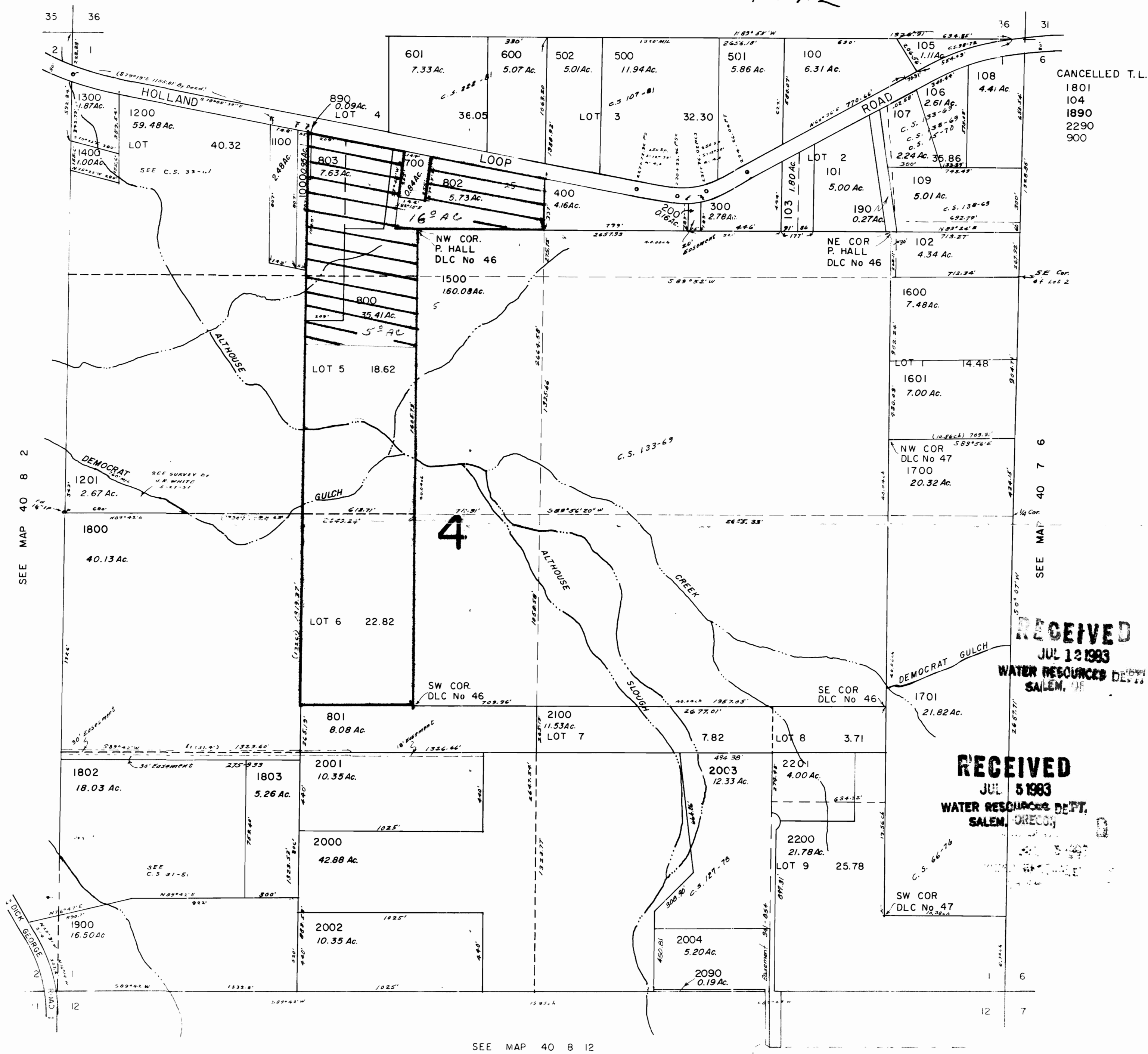


1"=400'

SEE MAP 39 8 36

T-5312



RECEIVED  
JUL 12 1983  
WATER RESOURCES DEPT.  
SALEM, OREGON

RECEIVED  
JUL 5 1983  
WATER RESOURCES DEPT.  
SALEM, OREGON

CANCELLED T.L.  
1801  
104  
1890  
2290  
900

SEE MAP 40 8 2

SEE MAP 40 7 6

SEE MAP 40 8 12