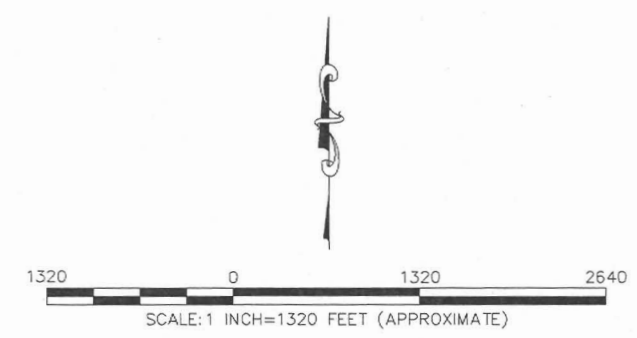
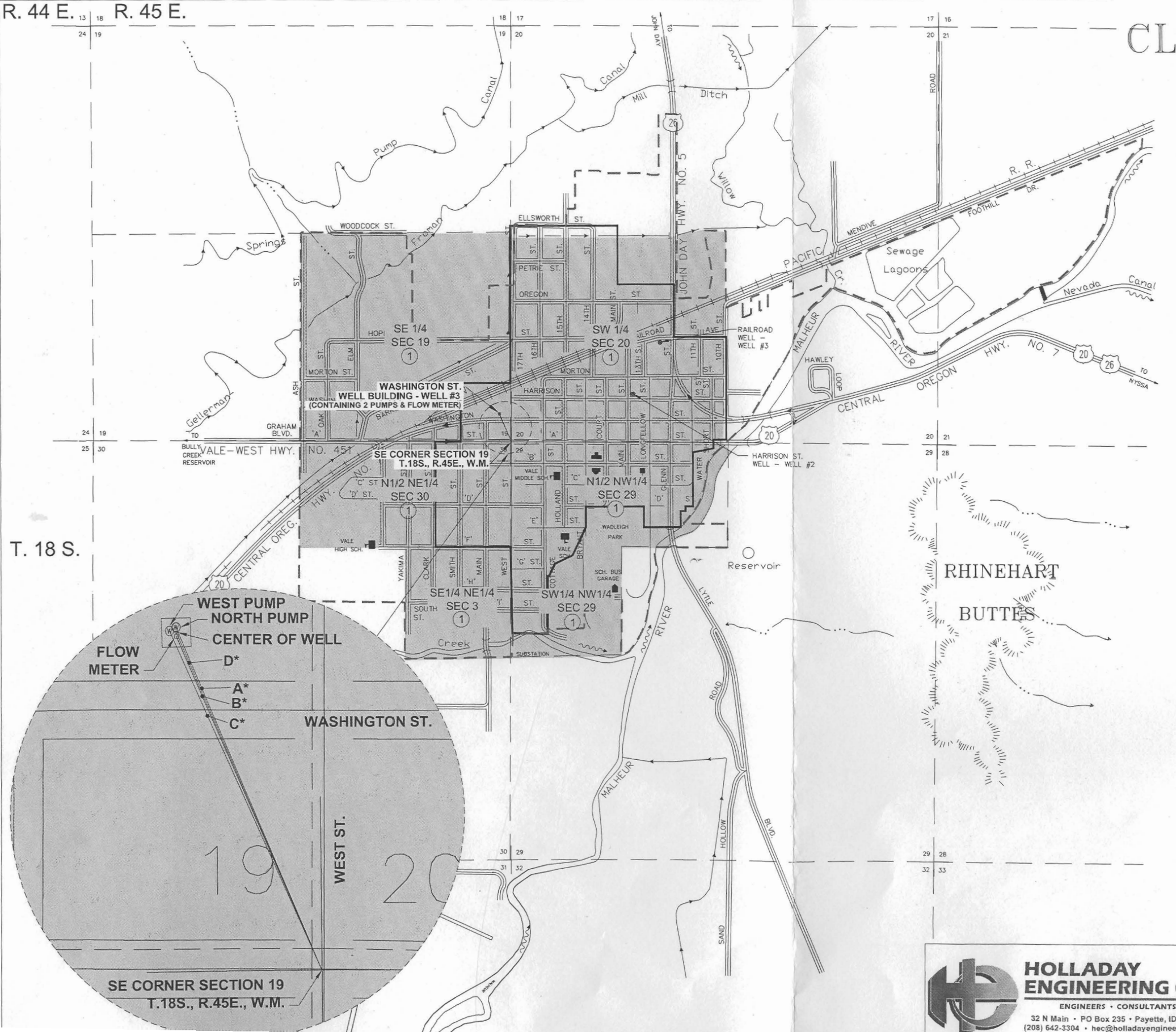


CORR MAP# 0602

# CLAIM OF BENEFICIAL USE & SITE MAP T-8339 PERMIT G-4405

R. 44 E. R. 45 E.

T. 18 S.



## CITY OF VALE

### LEGEND:

- CURRENT CITY LIMITS
- - - CITY BOUNDARY DURING 1927 ADJUDICATION
- ~ RIVER FLOW DIRECTION
- IRRIGATION DITCH FLOW DIRECTION
- ① PERMIT NO G-4405
- A\* (NORTH PUMP) N22°48'57"W 387.50'
- B\* (FLOW METER) N23°19'51"W 378.76'
- C\* (WEST PUMP) N23°56'53"W 386.69'
- D\* (CENTER OF WELL) N23°05'59"W 382.60'

Certified Water Right Examiner  
#069  
**DRAFT**  
Michael E. Holladay  
Nov. 19, 1987  
STATE OF OREGON

REVISED: DECEMBER 14, 2011



**HOLLADAY ENGINEERING CO.**  
ENGINEERS • CONSULTANTS  
32 N Main • PO Box 235 • Payette, ID 83661  
(208) 642-3304 • hec@holladayengineering.com

**WATER RIGHTS MAP  
CITY OF VALE, OREGON**

