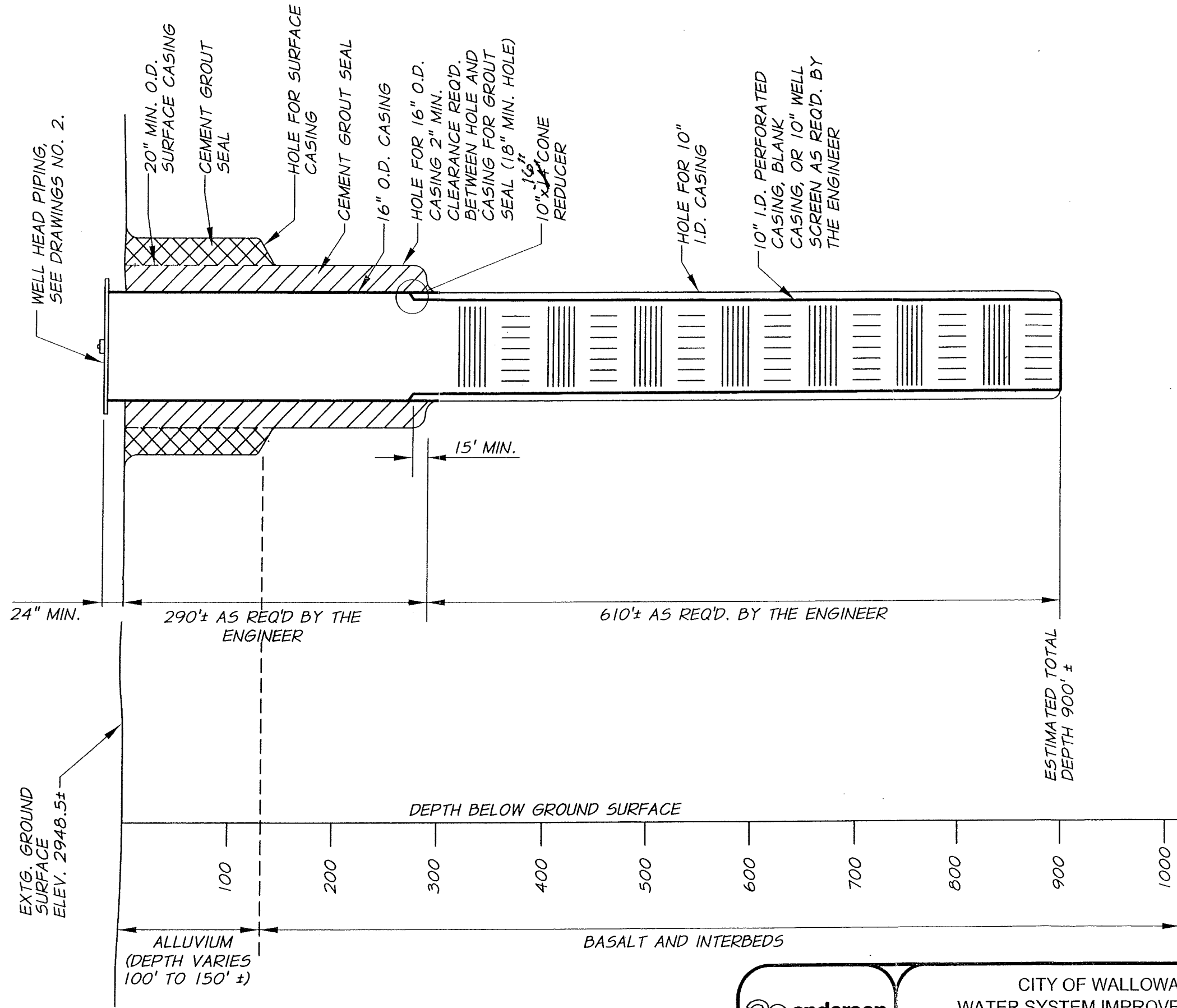


S:\WALLOWA\509-19 WSMF2011DWG\WellNo2WELL-SECT.dwg, Layout1, 1/22/2011 1:47:20 PM, astoffen



NOTE:
 LOCATION OF
 VARIOUS FEATURES
 SHOWN ARE
 ESTIMATES ONLY.

RECEIVED

FEB 21 2012

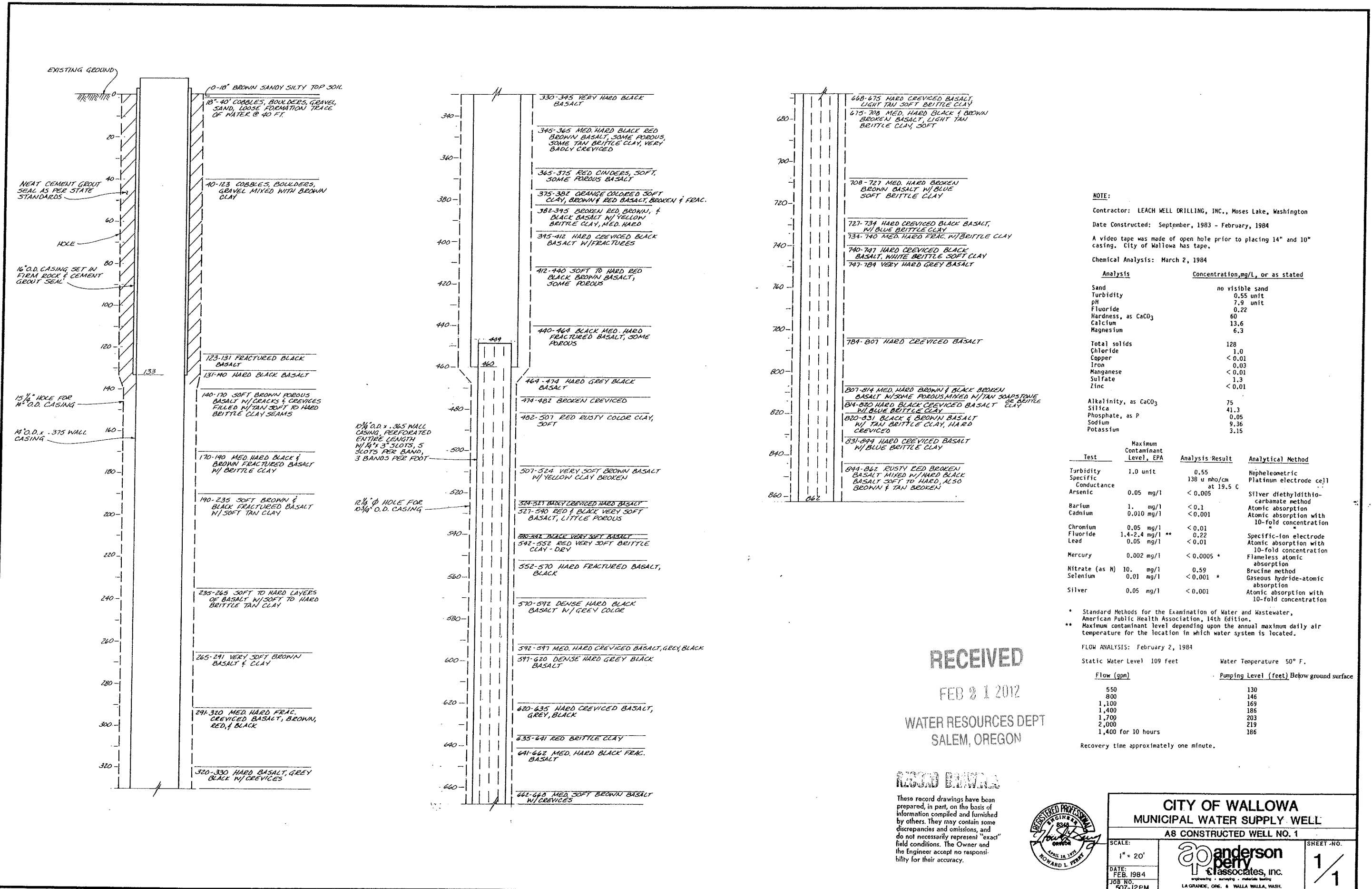
WATER RESOURCES DEPT
SALEM, OREGON



CITY OF WALLOWA
 WATER SYSTEM IMPROVEMENTS
 WELL NO. 2
 ANTICIPATED WELL CONSTRUCTION

DRAWING
 1

T 11359



NOTE:
 Contractor: LEACH WELL DRILLING, INC., Moses Lake, Washington
 Date Constructed: September, 1983 - February, 1984
 A video tape was made of open hole prior to placing 14" and 10" casing. City of Wallowa has tape.
 Chemical Analysis: March 2, 1984

Analysis	Concentration, mg/L, or as stated
Sand	no visible sand
Turbidity	0.55 unit
pH	7.9 unit
Fluoride	0.22
Hardness, as CaCO ₃	60
Calcium	13.6
Magnesium	6.3
Total solids	128
Chloride	1.0
Copper	< 0.01
Iron	0.03
Manganese	< 0.01
Sulfate	1.3
Zinc	< 0.01
Alkalinity, as CaCO ₃	75
Silica	41.3
Phosphate, as P	0.05
Sodium	9.36
Potassium	3.15

Test	Maximum Contaminant Level, EPA	Analysis Result	Analytical Method
Turbidity	1.0 unit	0.55	Nephelometric
Specific Conductance	138 u mho/cm at 19.5 C	138 u mho/cm at 19.5 C	Platinum electrode cell
Arsenic	0.05 mg/l	< 0.005	Silver diethylthio-carbamate method
Barium	1. mg/l	< 0.1	Atomic absorption
Cadmium	0.010 mg/l	< 0.001	Atomic absorption with 10-fold concentration
Chromium	0.05 mg/l	< 0.01	Atomic absorption with 10-fold concentration
Fluoride	1.4-2.4 mg/l **	0.22	Specific-ion electrode
Lead	0.05 mg/l	< 0.01	Atomic absorption with 10-fold concentration
Mercury	0.002 mg/l	< 0.0005 +	Flameless atomic absorption
Nitrate (as N)	10. mg/l	0.59	Brucine method
Selenium	0.01 mg/l	< 0.001 +	Gaseous hydride-atomic absorption
Silver	0.05 mg/l	< 0.001	Atomic absorption with 10-fold concentration

* Standard Methods for the Examination of Water and Wastewater, American Public Health Association, 14th Edition.
 ** Maximum contaminant level depending upon the annual maximum daily air temperature for the location in which water system is located.

FLOW ANALYSIS: February 2, 1984

Static Water Level 109 feet	Water Temperature 50° F.
Flow (gpm)	Pumping Level (feet) Below ground surface
550	130
800	146
1,100	169
1,400	186
1,700	203
2,000	219
1,400 for 10 hours	186

Recovery time approximately one minute.

RECEIVED

FEB 21 2012

WATER RESOURCES DEPT
 SALEM, OREGON

RECORD DRAWING

These record drawings have been prepared, in part, on the basis of information compiled and furnished by others. They may contain some discrepancies and omissions, and do not necessarily represent "exact" field conditions. The Owner and the Engineer accept no responsibility for their accuracy.



CITY OF WALLOWA
MUNICIPAL WATER SUPPLY WELL
AS CONSTRUCTED WELL NO. 1

SCALE: 1" = 20'

DATE: FEB. 1984
 JOB NO: 507-12PM

anderson
 & associates, inc.
 ENGINEERS - SURVEYORS - METEOROLOGISTS
 LA GRANDE, ORE. & WALLA WALLA, WASH.

SHEET NO. 1/1