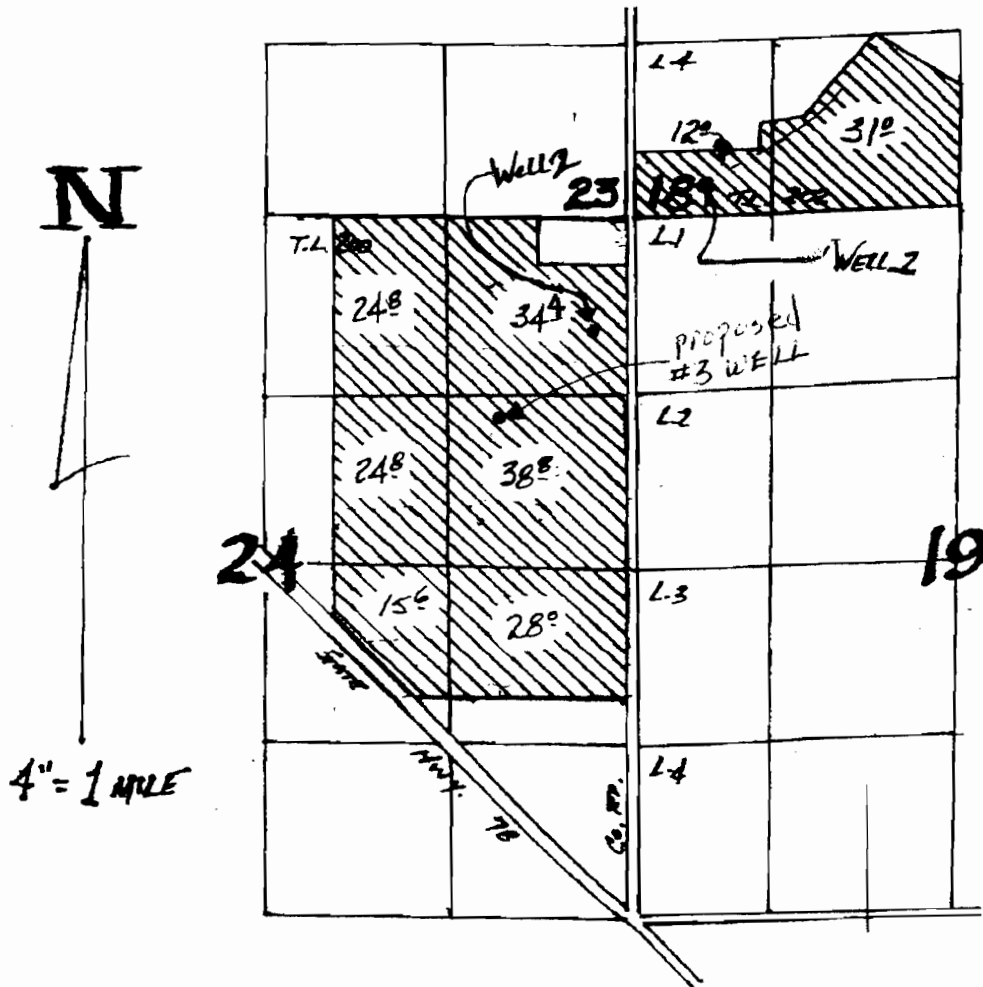


AMENDED April 23, 2012

# APPLICATION MAP for STEVE RICKMAN

## T. 23 S., R. 31 & 32 E., W. 4



WELLS LOCATED: #2-1120' S. & 420' W.; #1-280' N. & 520' E.;  
all from NE Cor. Sec. 24.  
#3-1800' S & 1000' W from  
NE Cor. Sec. 24

G16654

T011411

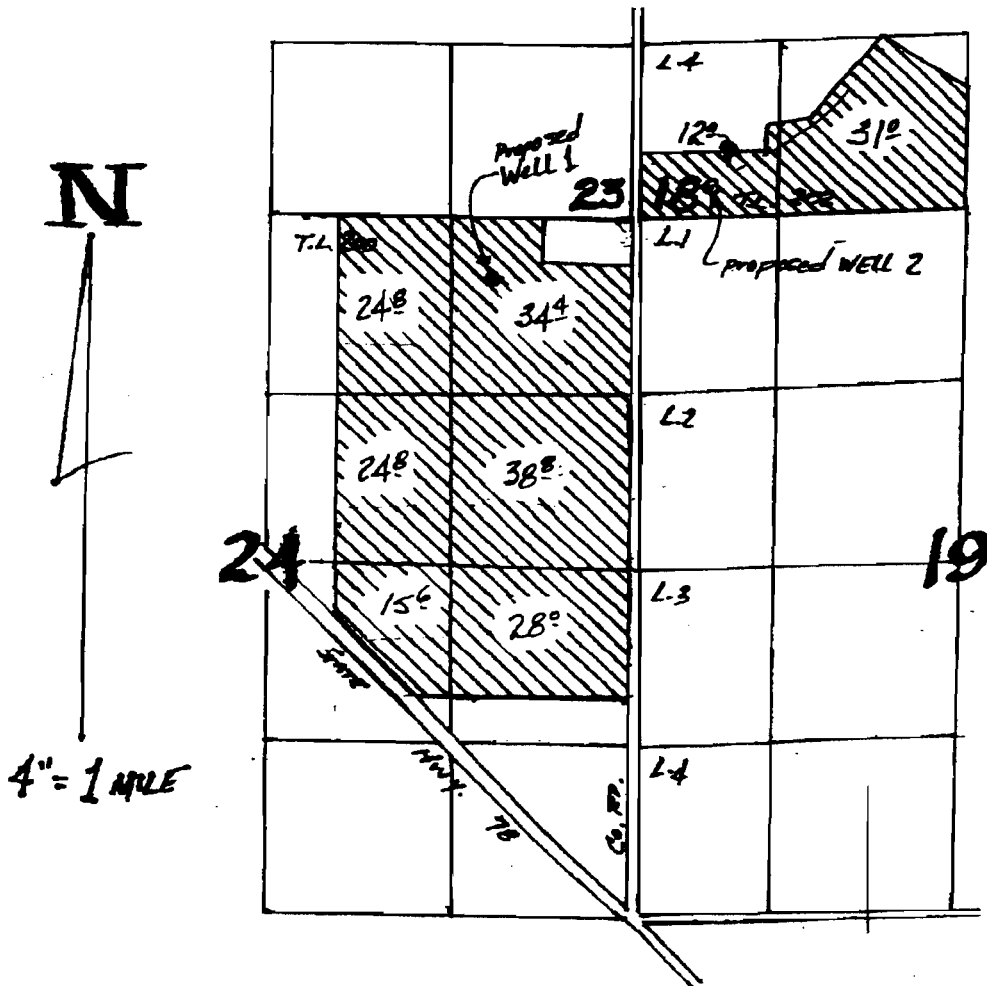
RECEIVED

APR 26 2012

WATER RESOURCES DEPT  
SALEM, OREGON

AMENDED JULY 6, 2009  
**APPLICATION MAP for**  
**STEVE RICKMAN**

**T. 23 S., R. 31 & 32 E., W.M.**



**RECEIVED**  
 JAN 28 2008  
 WATER RESOURCES DEPT  
 SALEM, OREGON

**RECEIVED**  
 APR 26 2012  
 WATER RESOURCES DEPT  
 SALEM, OREGON

WELLS LOCATED: #1-460' S. & 1120' W.; #2-280' N. & 520' E.;  
 both from NE Cor. Sec. 24.

**RECEIVED**

JUL 29 2009

WATER RESOURCES DEPT  
 SALEM, OREGON

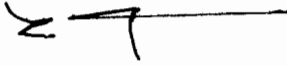
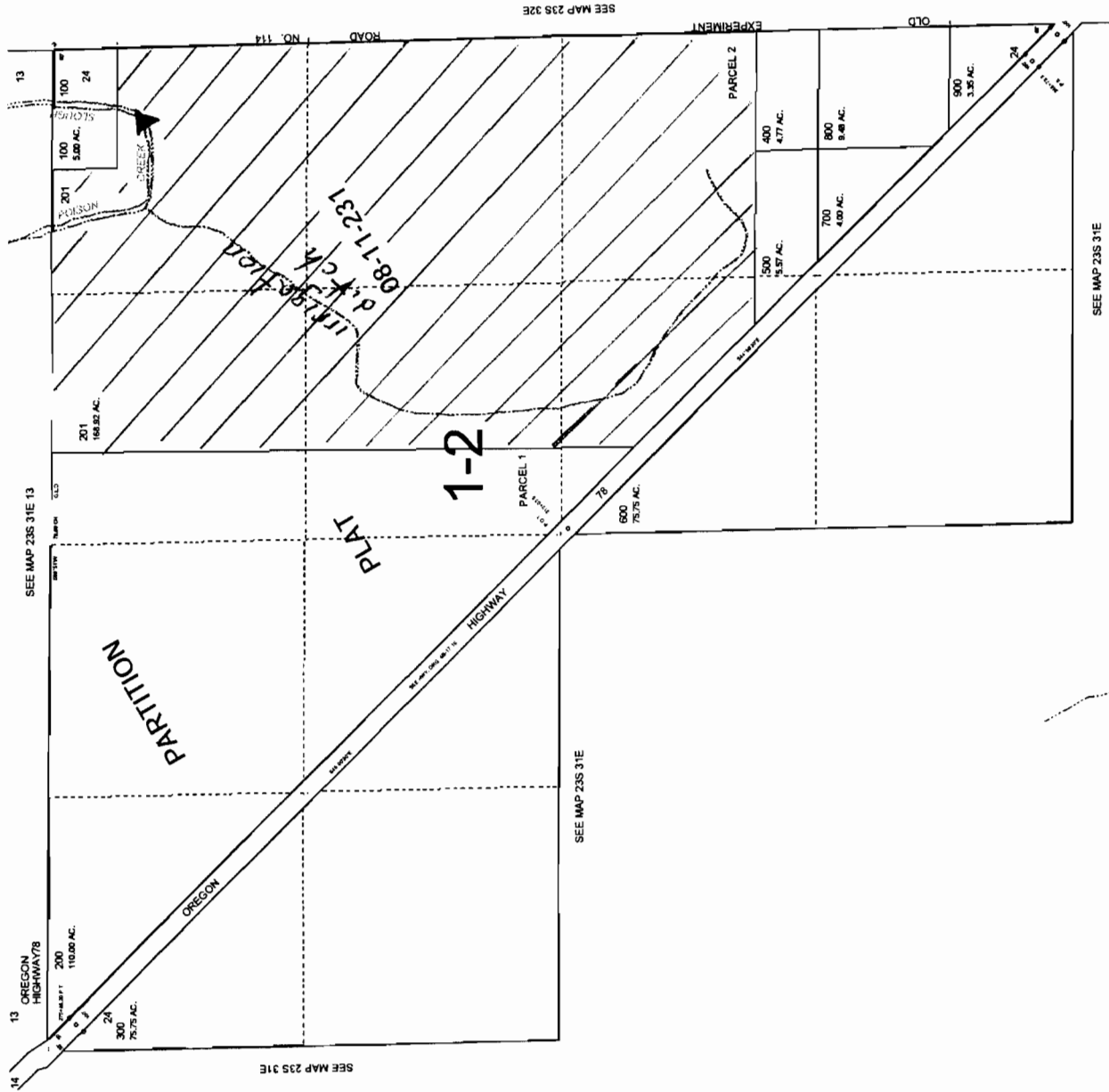
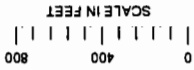
G16654

1011411

SECTION 24 T.23S. R.31E. W.M.  
 HARNEY COUNTY

23S 31E 24

THIS MAP WAS PREPARED FOR  
 ASSESSMENT PURPOSE ONLY



G16654

RECEIVED

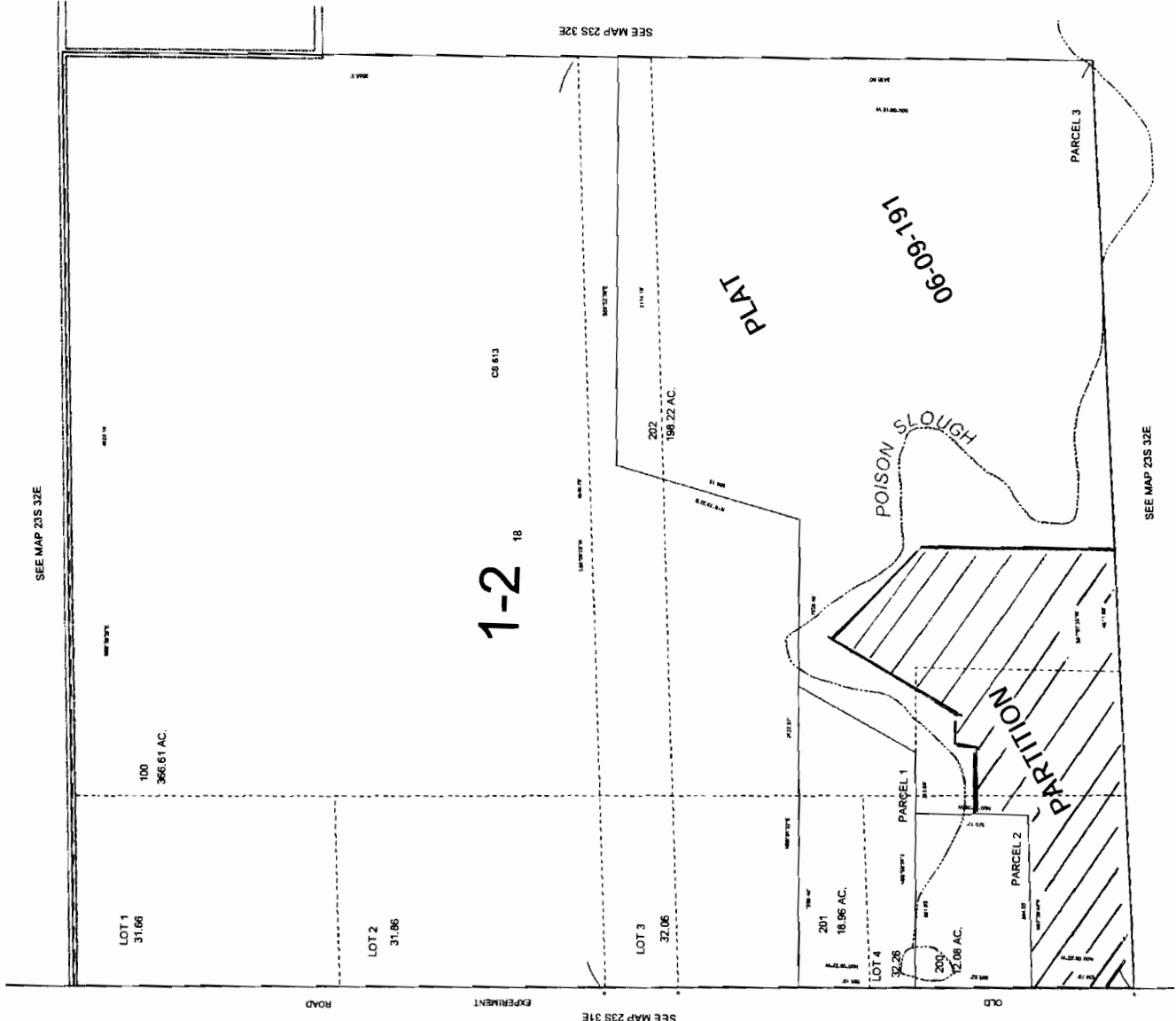
APR 26 2012

WATER RESOURCES DEPT  
 SALEM, OREGON

1011411

**SECTION 18 T.23S. R.32E. W.M.**  
**HARNEY COUNTY**  
 1" = 400'

23S 32E 18



SEE MAP 23S 32E

100  
366.61 AC.

LOT 1  
31.66

LOT 2  
31.86

LOT 3  
32.06

201  
18.96 AC.

LOT 4  
32.26

PARCEL 1  
18.96 AC.

200  
12.08 AC.

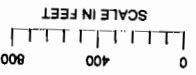
PARCEL 2  
12.08 AC.

202  
198.22 AC.

PARCEL 3

SEE MAP 23S 32E

THIS MAP WAS PREPARED FOR ASSESSMENT PURPOSE ONLY



G16654

**RECEIVED**

APR 26 2012

WATER RESOURCES DEPT  
 SALEM, OREGON

1011411