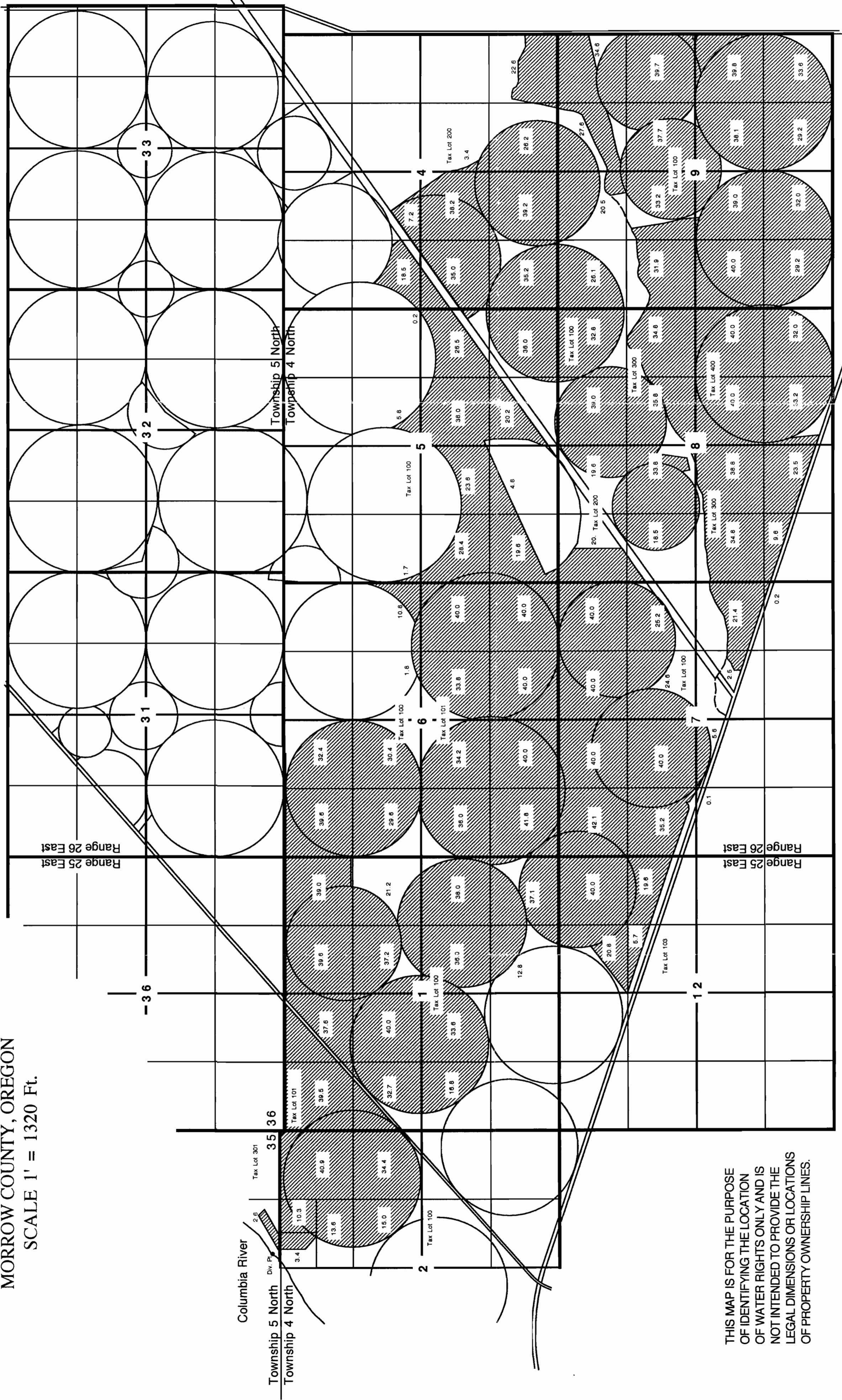



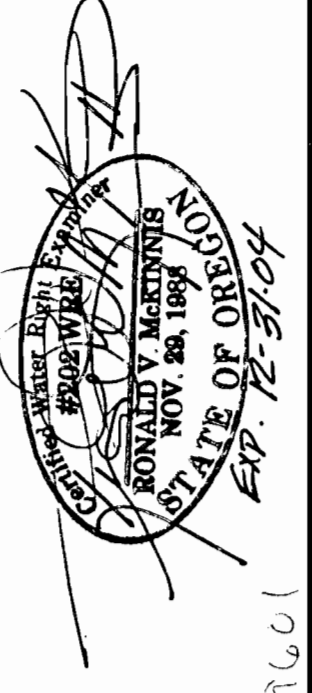
TOWNSHIP 4 & 5 NORTH, RANGE 25 & 26 EAST, W.M.
 MORROW COUNTY, OREGON
 SCALE 1" = 1320 Ft.



THIS MAP IS FOR THE PURPOSE OF IDENTIFYING THE LOCATION OF WATER RIGHTS ONLY AND IS NOT INTENDED TO PROVIDE THE LEGAL DIMENSIONS OR LOCATIONS OF PROPERTY OWNERSHIP LINES.


 WATER RIGHTS AUTHORIZED AT THIS LOCATION PERMIT #35694 (2884.1 ACRES)
 42.1 ACRES ABANDONED LEAVING 2842.0 ACRES AUTHORIZED
 (690.0 TOTAL ACRES TRANSFERRED)
 31.7 ACRES ARE USED TO FILL IN THE DEFICIENCIES IN THE LOCAL IRRIGATED PROPERTIES,
 157.1 ACRES (393 CFS) ARE TRANSFERRED TO MUNICIPAL USE DURING THE SAME PERIOD OF USE
 501.2 ACRES ARE TRANSFERRED TO T 4 N, R 25 E, W.M. SECTIONS 23 & 24
 466.2 ACRES REMAIN PRIMARY AT THE NEW PLACE OF USE
 & 35.0 ACRES IS DIMINISHED TO SUPPLEMENTAL TO APP. #S-85867 [E]APPROVED

WATER RIGHTS TRANSFER MAP
 IN NAME OF
Port of Morrow


 T-9601