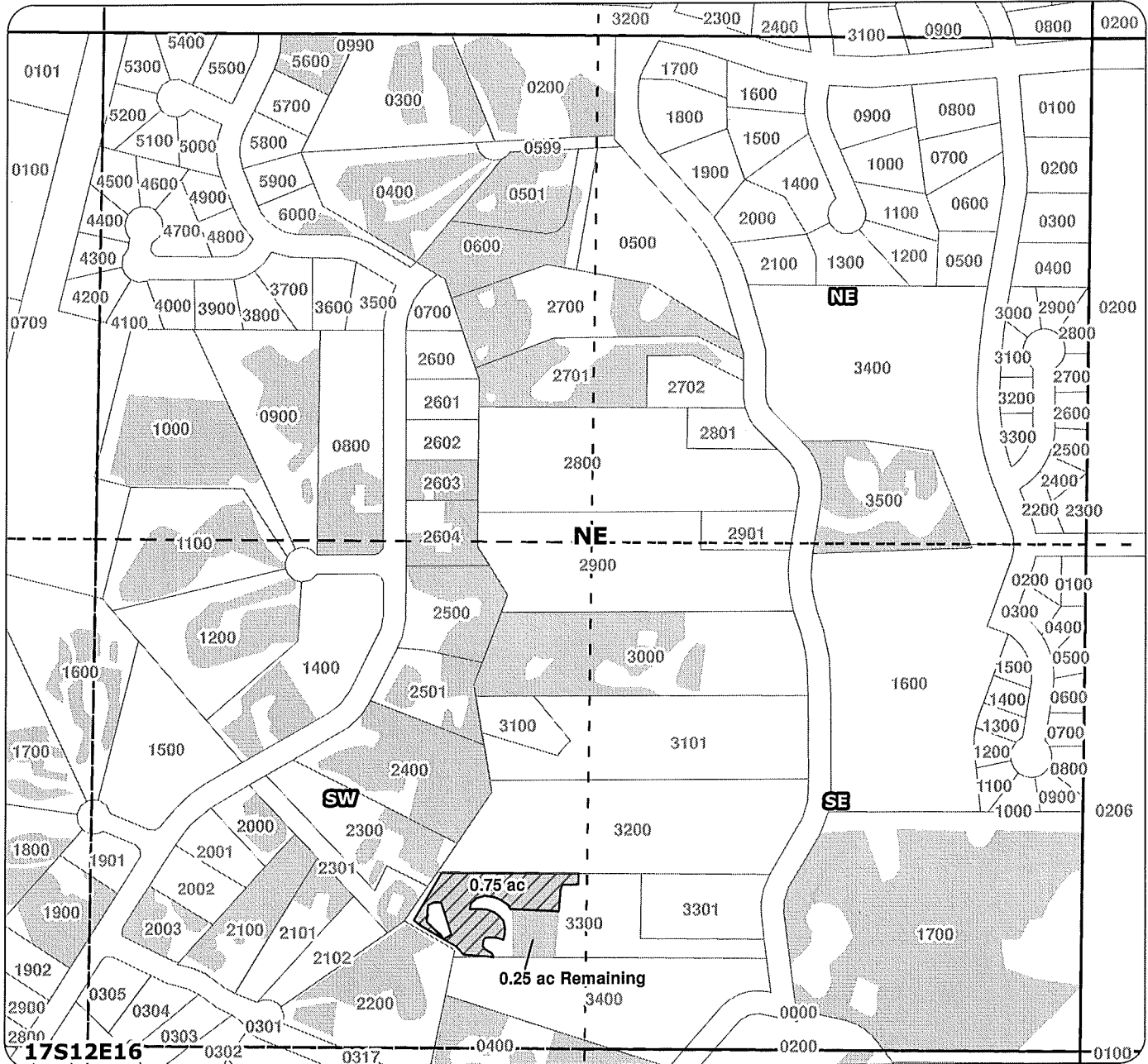


# 2007 Swalley Irrigation District and Deschutes River Conservancy Permanent Instream Transfer Map



## Application for Permanent Instream Transfer

for  
City of Bend  
taxlot 3300

.75 acres  
.25 acres remaining  
(171216SWNE)

RECEIVED

OCT 29 2008

WATER RESOURCES DEPT.  
SALEM, OREGON



Geo-Spatial Solutions, Inc.

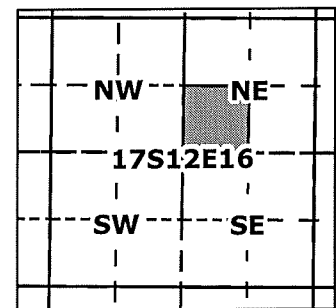
www.geospatialolutions.com



Proposed Transfer of Irrigation Rights



Water Rights



1 inch equals 400 feet

Date Created: May 2007