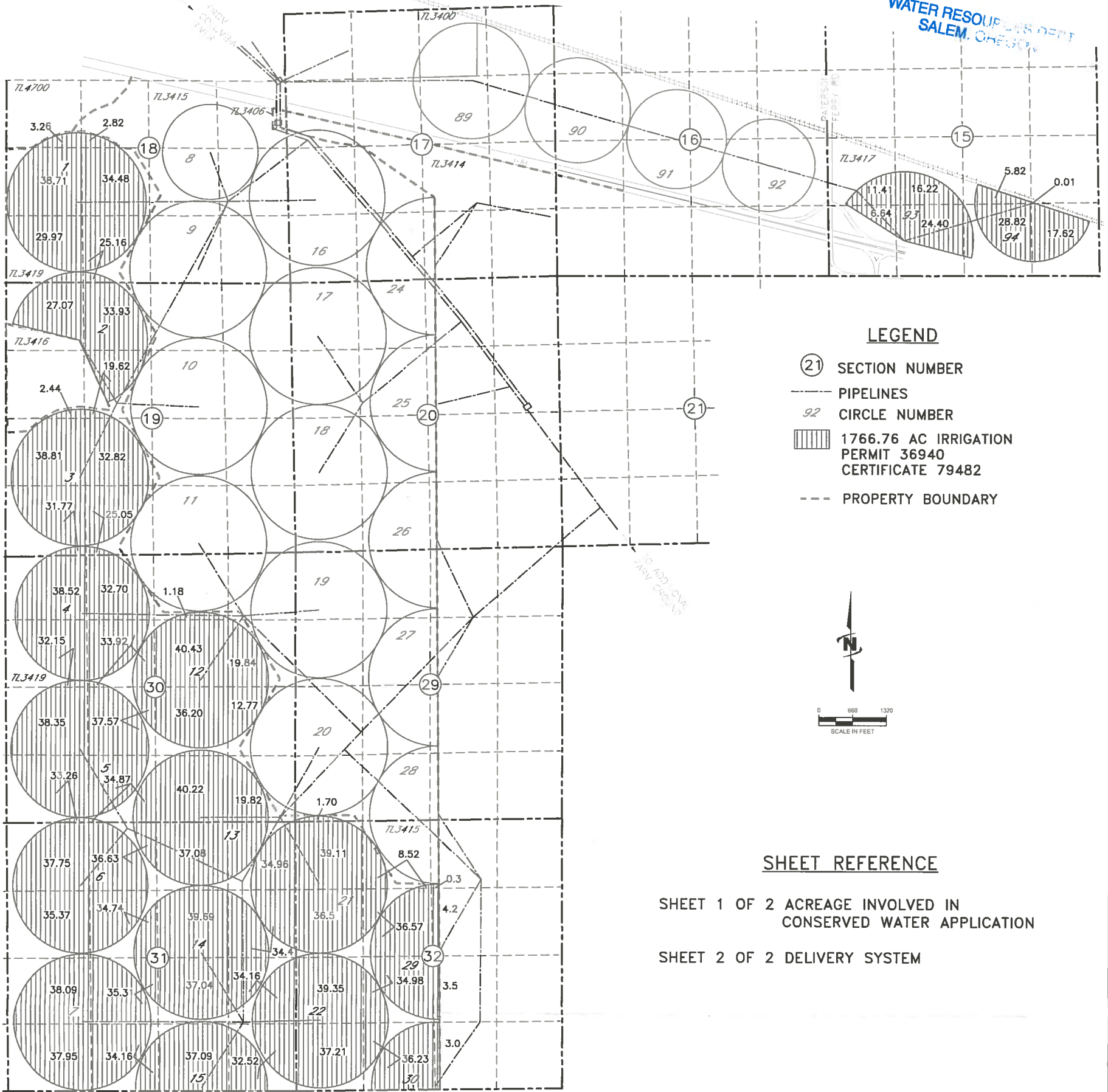


EXHIBIT A – SHEET 1 OF 2
 APPLICATION MAP FOR ALLOCATION OF
 CONSERVED WATER
 HALE FARMS LLC
 T4N, R26E WM MORROW COUNTY

RECEIVED

DEC 24 2013

WATER RESOURCES DEPT
 SALEM, OREGON



LEGEND

- (21) SECTION NUMBER
- PIPELINES
- CIRCLE NUMBER
- ▨ 1766.76 AC IRRIGATION PERMIT 36940 CERTIFICATE 79482
- PROPERTY BOUNDARY



SHEET REFERENCE

SHEET 1 OF 2 ACREAGE INVOLVED IN CONSERVED WATER APPLICATION

SHEET 2 OF 2 DELIVERY SYSTEM

ACREAGE INVOLVED IN CONSERVED WATER APPLICATION

NOTE: THE PURPOSE OF THIS MAP IS TO IDENTIFY THE APPROXIMATE LOCATION OF THE WATER RIGHT. IT IS NOT INTENDED TO PROVIDE INFORMATION RELATIVE TO THE LOCATION OF PROPERTY OWNERSHIP BOUNDARY LINES, PIPE LOCATIONS AND SIZES WHERE SHOWN WERE PROVIDED BY FARM OPERATIONAL PERSONNEL AND ARE APPROXIMATE LOCATIONS AND SIZES.



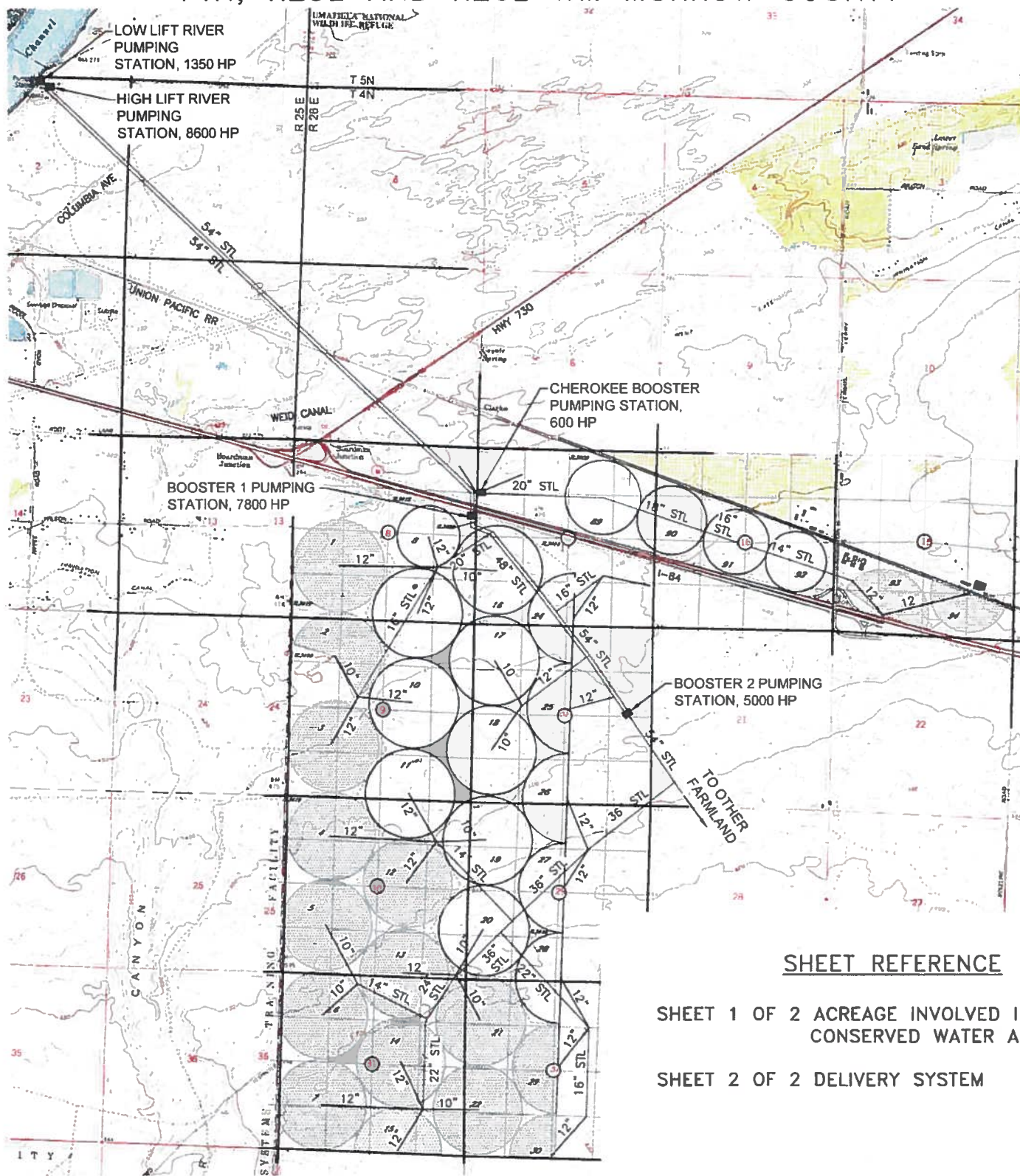
Engineers • Surveyors • Planners
 2810 W. CLEARWATER AVE., STE. 201
 KENNEWICK, WA 98336 (509) 783-2144

RECEIVED

DEC 24 2013

WATER RESOURCES DEPT
 SALEM, OREGON

EXHIBIT A – SHEET 2 OF 2
APPLICATION MAP FOR ALLOCATION OF
CONSERVED WATER
HALE FARMS, LLC
T4N, R25E AND R26E WM MORROW COUNTY



SHEET REFERENCE

SHEET 1 OF 2 ACREAGE INVOLVED IN
CONSERVED WATER APPLICATION
SHEET 2 OF 2 DELIVERY SYSTEM

DELIVERY SYSTEM

LEGEND



LOCATION OF EXISTING WATER RIGHTS
INVOLVED IN CONSERVED WATER APPLICATION

FOR QUARTER QUARTER ACREAGE VALUES
REFER TO SHEET 1 OF 2

NOTE:
THE PURPOSE OF THIS MAP IS TO IDENTIFY THE APPROXIMATE LOCATION OF THE WATER RIGHT. IT IS NOT INTENDED
TO PROVIDE INFORMATION RELATIVE TO THE LOCATION OF PROPERTY OWNERSHIP BOUNDARY LINES. PIPE LOCATIONS
AND SIZES WHERE SHOWN WERE PROVIDED BY FARM OPERATIONAL PERSONNEL AND ARE APPROXIMATE LOCATIONS AND
SIZES.

DRAWING: F:\Project\30-08-016 - Porfily Water Rights Consulting\00 Misc Engineering\Cad\hale\30-08-016 Hale DEL 12-17-13.dwg
PRINTED BY: rwillard on 12/17/13 11:07 AM



Engineers • Surveyors • Planners
2810 W. CLEARWATER AVE., STE 201
SEASIDE, WA 98286 (509) 783-2144

RECEIVED

DEC 24 2013

WATER RESOURCES DEPT
SALEM, OREGON