

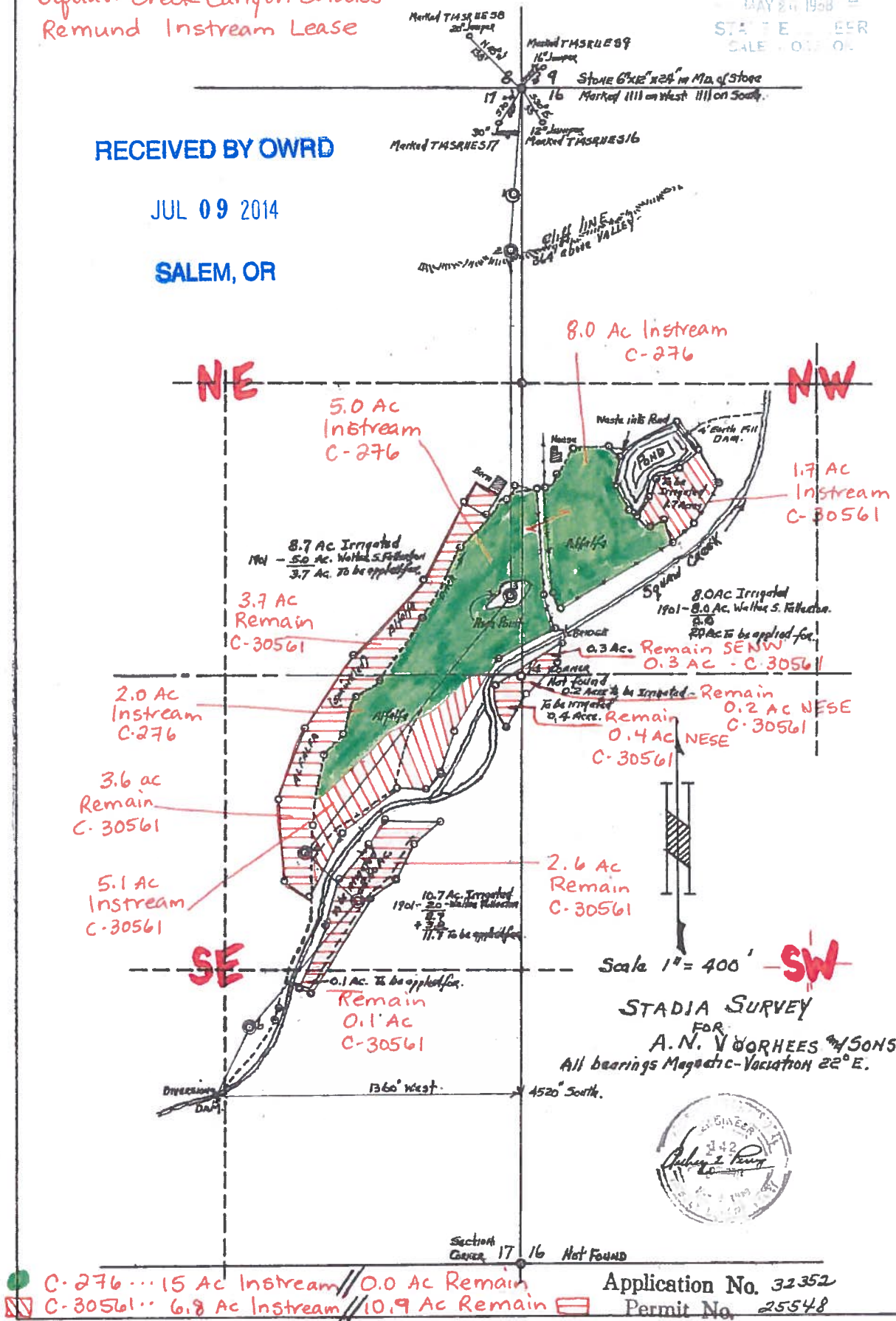
Squaw Creek Canyon Estates
Remund Instream Lease

MAY 20 1958
STATE ENGINEER
SALEM, OREGON

RECEIVED BY OWRD

JUL 09 2014

SALEM, OR



●	C-276	15 Ac Instream	0.0 Ac Remain
▨	C-30561	6.8 Ac Instream	10.9 Ac Remain

Application No. 32352
Permit No. 25548

TOTAL 21.8 Ac Instream, 10.9 Ac Remain