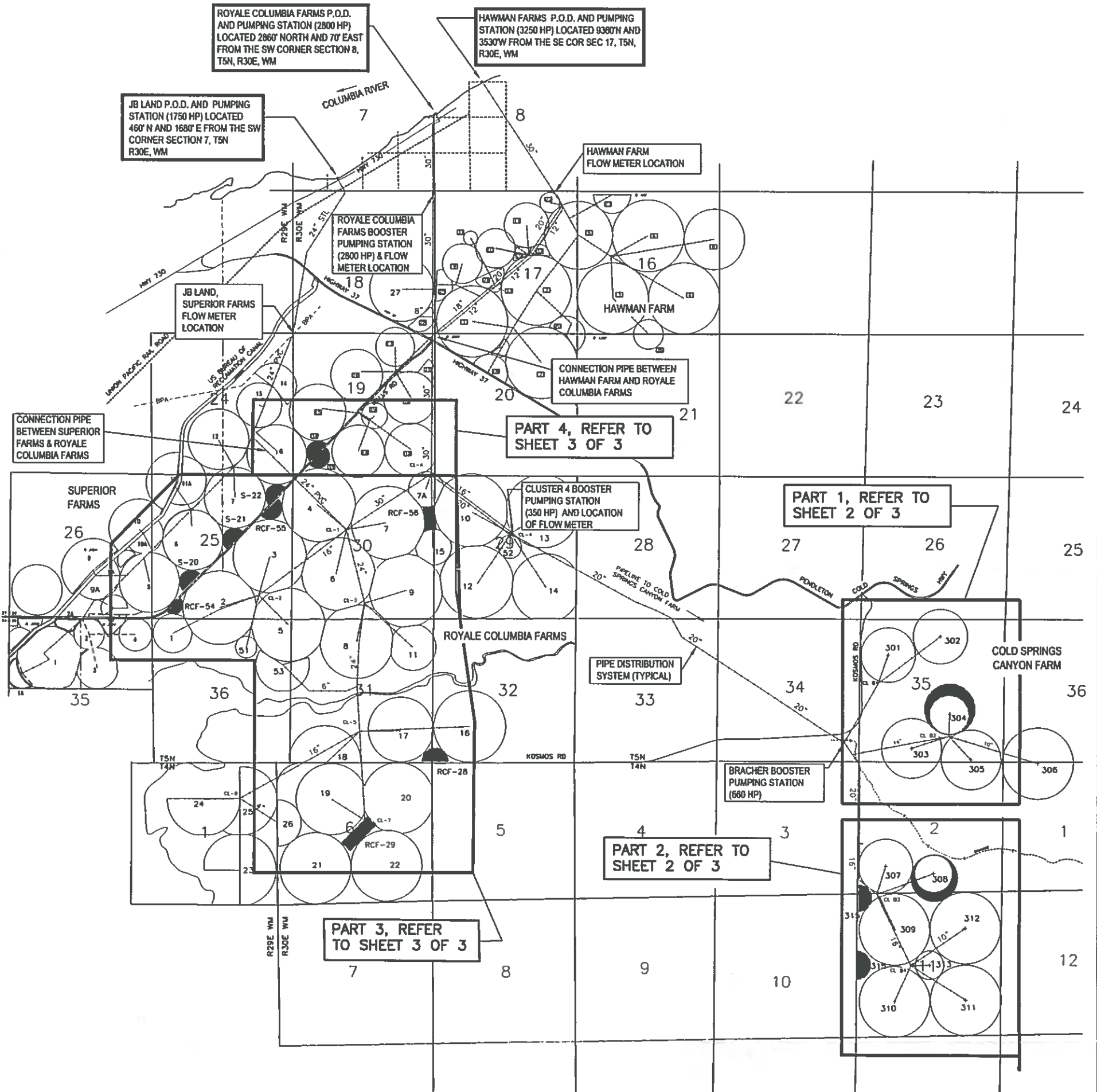


SHEET 1 OF 3  
 JB LAND LLC, (SUPERIOR FARMS)


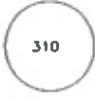

Map For  
 60-Day Notice of Use or Disposition for a portion of Applicant's Portion of Conserved Water For CW-64  
 T4N & T5N, R29E & R30E, W.M., UMATILLA COUNTY

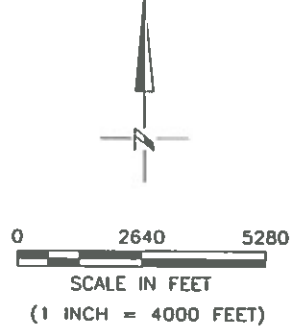
MAP OF  
 GENERAL LOCATION, DISTRIBUTION  
 SYSTEM, AND POINTS OF DIVERSION

NOTE:  
 FOR DETAILED PLACE OF USE REFER  
 TO SHEETS 2 OF 3 AND 3 OF 3



LEGEND

-  PLACE OF USE (ASSOCIATED WITH ORIGINATING CERTIFICATES 80773 & 85285) REFER TO SHEET 2 OF 3 AND 3 OF 3 FOR DETAILS
-  EXISTING CIRCLE IRRIGATION MACHINE
-  BURIED PIPELINE



RECEIVED BY OWRD

JUN 12 2014

SALEM, OR

DGV Consulting, PLLC  
 EMAIL: dalevconsulting@gmail.com  
 PHONE: 509 627 8717

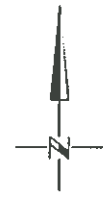
MAY 19, 2014

NOTE: THE PURPOSE OF THIS MAP IS TO IDENTIFY THE APPROXIMATE LOCATION OF THE WATER RIGHT. IT IS NOT INTENDED TO PROVIDE INFORMATION RELATIVE TO THE LOCATION OF PROPERTY OWNERSHIP BOUNDARY LINES. PIPELINE SIZES AND LOCATION WERE PROVIDED BY FARM PERSONNEL AND HAVE NOT BEEN VERIFIED.

**SHEET 2 OF 3**  
**JB LAND LLC, (SUPERIOR FARMS) & COLD SPRINGS CANYON LLC**  
**Map For**

**60-Day Notice of Use or Disposition for a portion of Applicant's Portion of Conserved Water For CW-64**  
**T4N & T5N, R29E & R30E, W.M., UMATILLA COUNTY**

REFER TO SHEET 1 OF 3 FOR LOCATION OF  
 POINTS OF DIVERSION AND GENERAL LOCATION

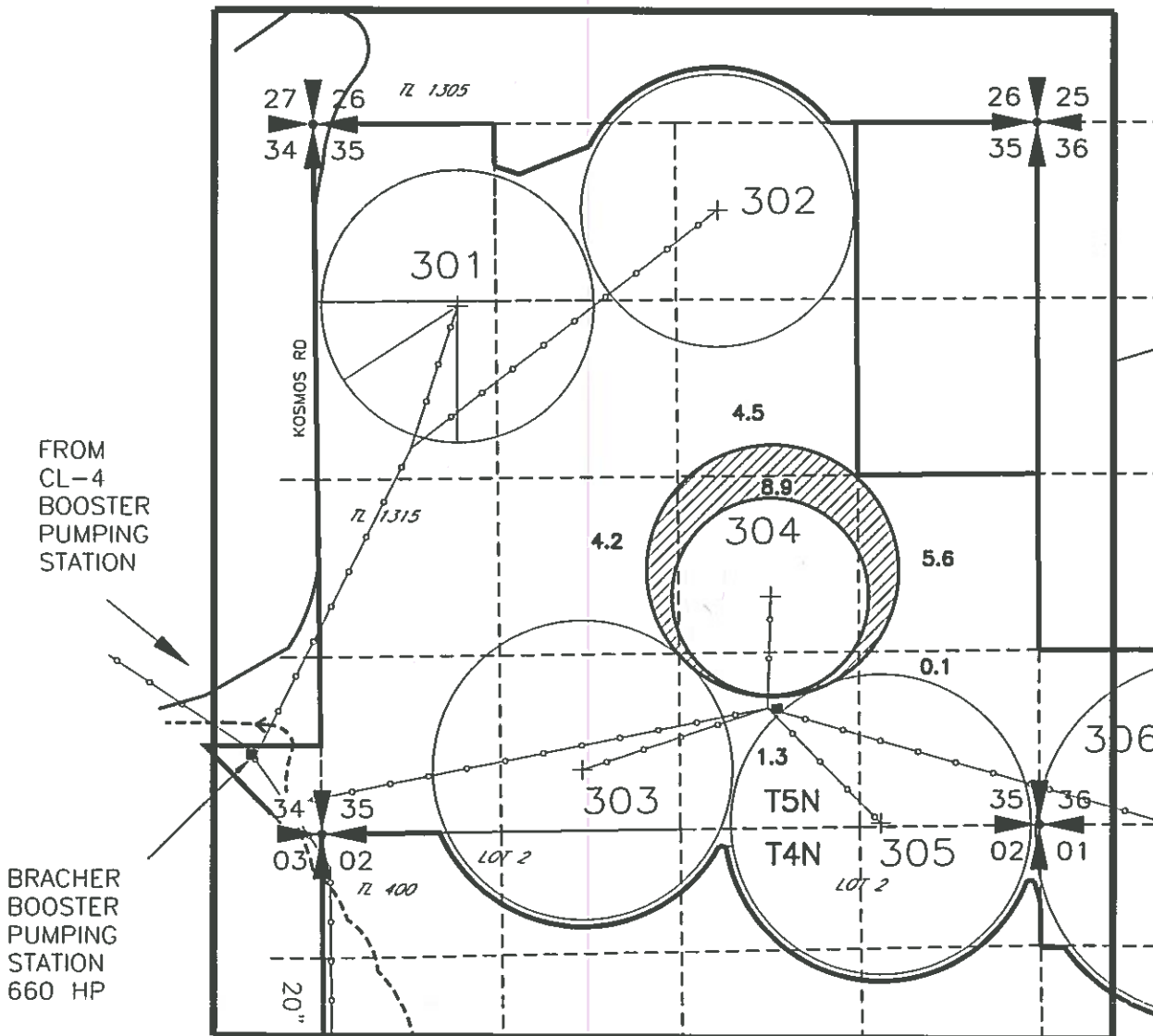


**PART 1,**  
**T5N, R30E, W.M.**

**PART 1 - LEGEND**



AREA TO BE IRRIGATED  
 ASSOCIATED WITH ORIGINATING  
 CERT 80773, 24.6 ACRES



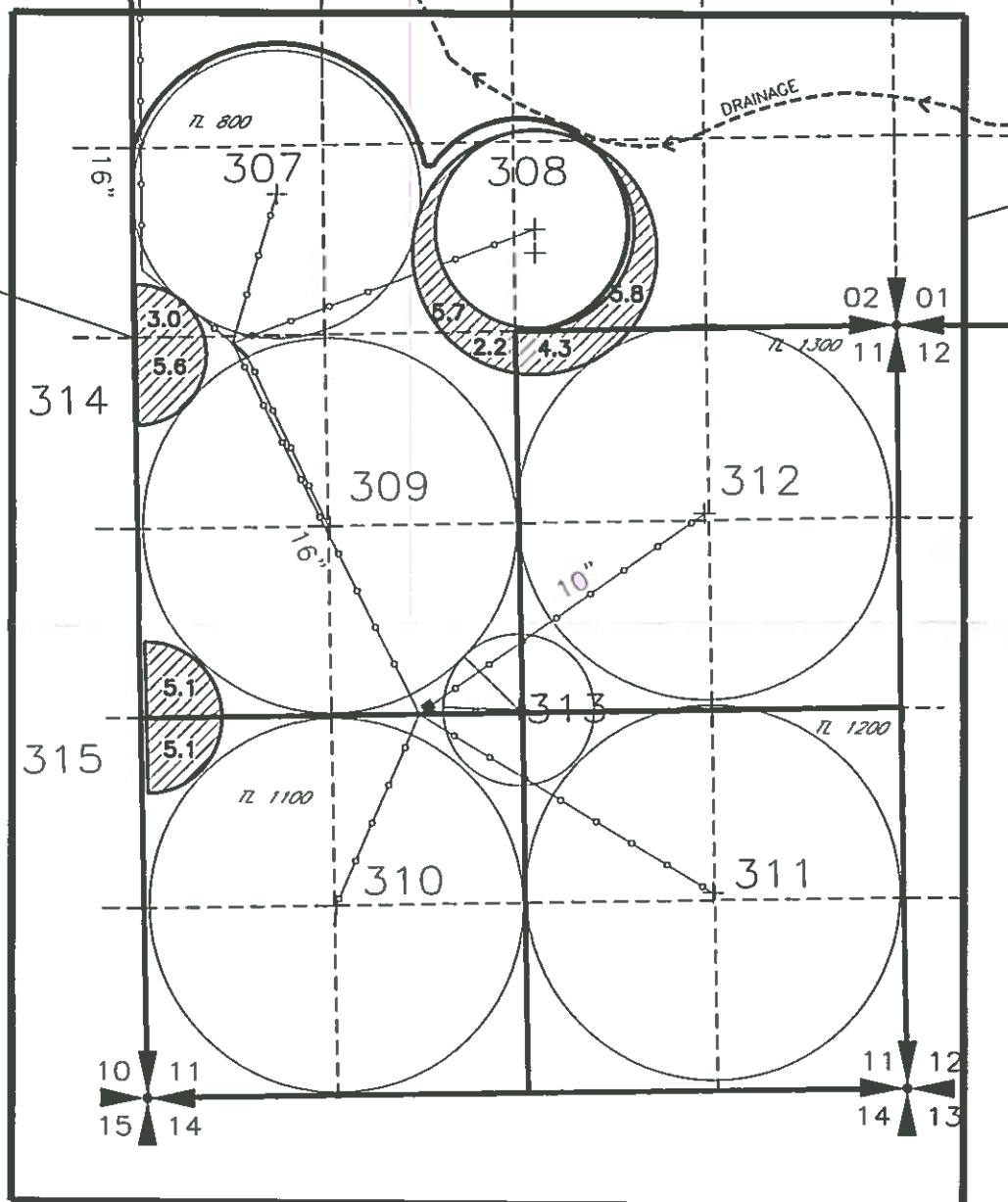
**PART 2,**  
**T4N, R30E, W.M.**

**PART 2 - LEGEND**



AREA TO BE IRRIGATED  
 ASSOCIATED WITH ORIGINATING  
 CERT 80773, ~~61.4~~ ACRES

- 311 CIRCLE NUMBER
- BURIED PIPELINE
- TAX LOT BOUNDARY



RECEIVED BY OWRD

JUN 12 2014

SALEM, OR

**DGV Consulting, PLLC**

EMAIL: dalevconsulting@gmail.com  
 PHONE: 509 627 8717

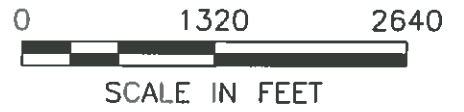
MAY 20, 2014

NOTE:  
 THE PURPOSE OF THIS MAP IS TO IDENTIFY THE APPROXIMATE LOCATION OF THE WATER RIGHT. IT IS NOT  
 INTENDED TO PROVIDE INFORMATION RELATIVE TO THE LOCATION OF PROPERTY OWNERSHIP BOUNDARY LINES.  
 PIPELINE SIZES AND LOCATIONS WERE PROVIDED BY FARM PERSONNEL AND HAVE NOT BEEN VERIFIED.

SHEET 3 OF 3  
 JB LAND LLC, (SUPERIOR FARMS) & COLD SPRINGS CANYON LLC  
 Map For

60-Day Notice of Use or Disposition for a portion of Applicant's Portion of Conserved Water For CW-64  
 T4N & T5N, R29E & R30E, W.M., UMATILLA COUNTY

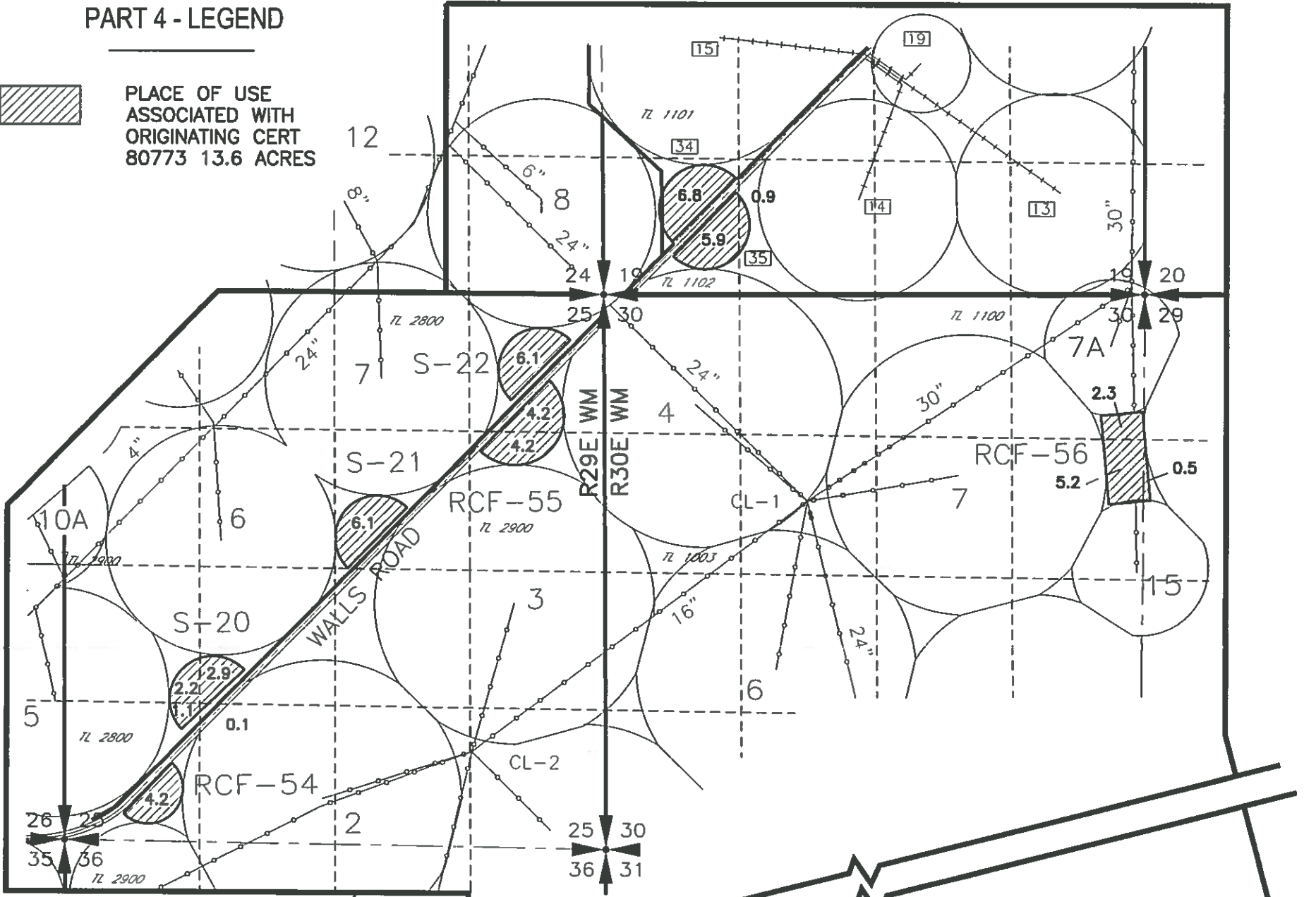
REFER TO SHEET 1 OF 3 FOR LOCATION OF  
 POINTS OF DIVERSION AND GENERAL LOCATION



**PART 4,  
 T5N, R30E, W.M.**

**PART 4 - LEGEND**

PLACE OF USE  
 ASSOCIATED WITH  
 ORIGINATING CERT  
 80773 13.6 ACRES



**PART 3,  
 T4N & T5N,  
 R29E & R30E, W.M.**

**PART 3 - LEGEND**

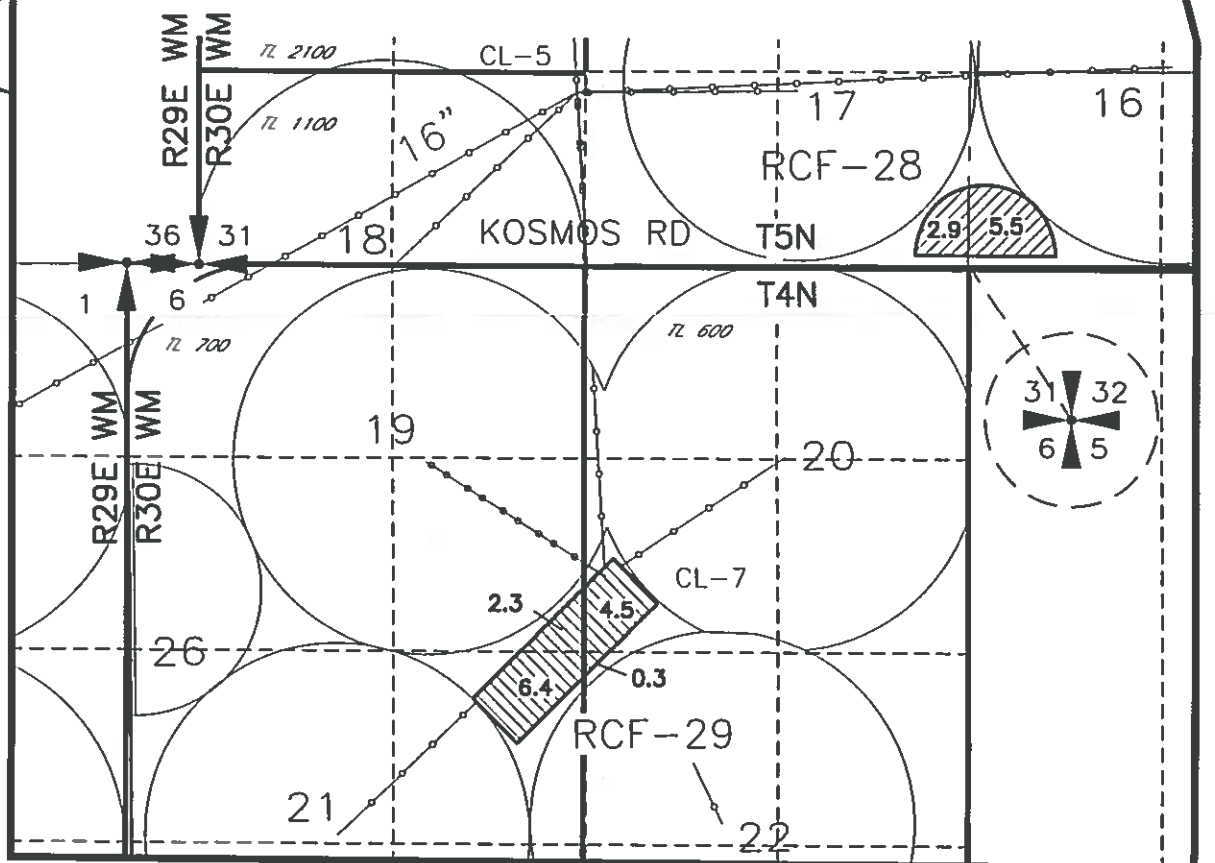
AREA TO BE IRRIGATED  
 ASSOCIATED WITH ORIGINATING  
 CERT 80773, 47.5 ACRES

AREA TO BE IRRIGATED  
 ASSOCIATED WITH ORIGINATING  
 CERT 85285, 13.5 ACRES

311 CIRCLE NUMBER

BURIED PIPELINE

TAX LOT BOUNDARY



RECEIVED BY OWRD

JUN 12 2014

NOTE:  
 THE PURPOSE OF THIS MAP IS TO IDENTIFY THE APPROXIMATE LOCATION OF THE WATER RIGHT. IT IS NOT  
 INTENDED TO PROVIDE INFORMATION RELATIVE TO THE LOCATION OF PROPERTY OWNERSHIP BOUNDARY LINES.  
 PIPELINE SIZES AND LOCATIONS WERE PROVIDED BY FARM PERSONNEL AND HAVE NOT BEEN VERIFIED.