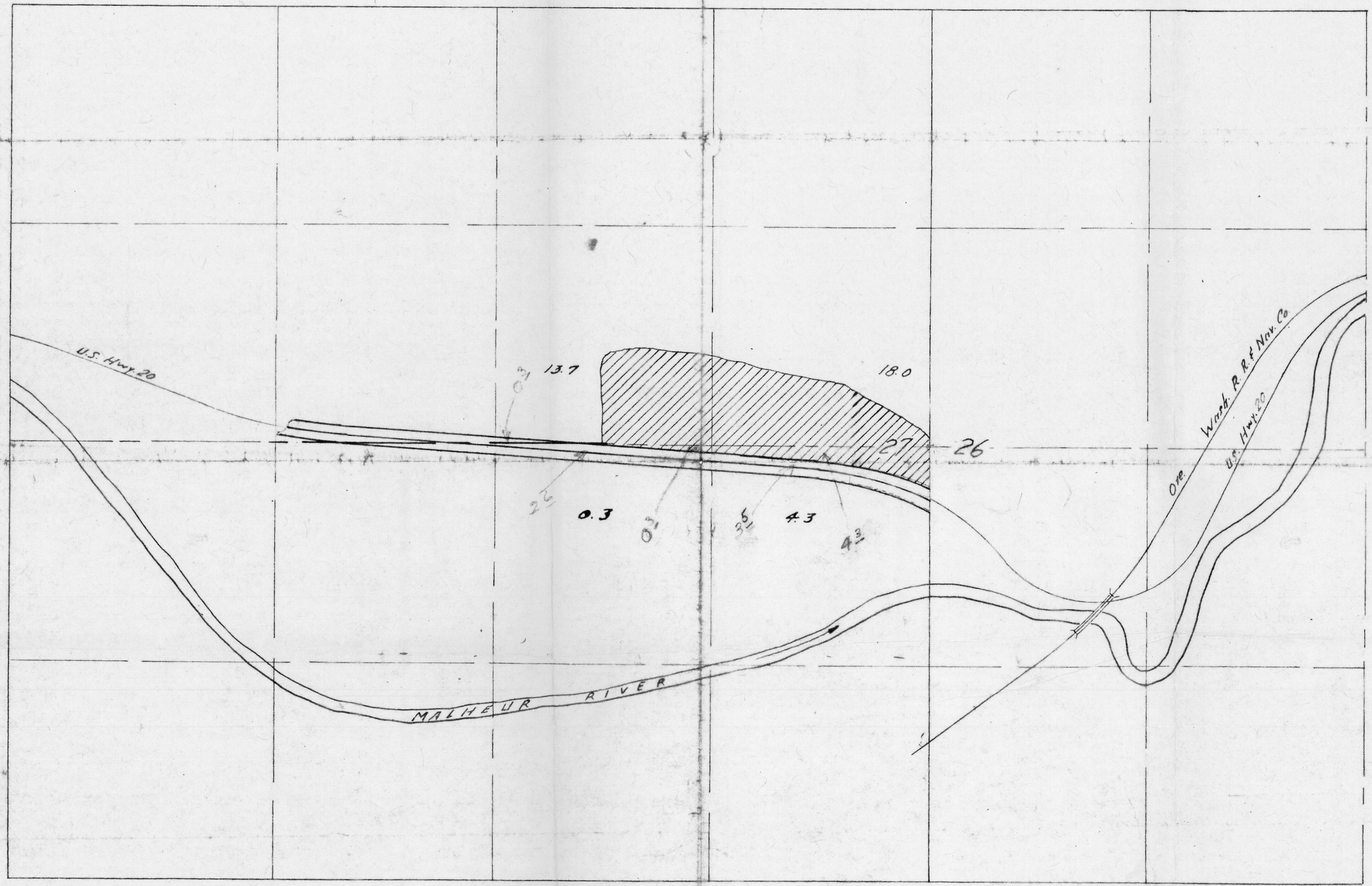


ACERAGE BEING TRANSFERED
Application of D. E. Jones Junctura

T. 20 S., R. 39 E.



[Faint handwritten notes in the bottom left corner]

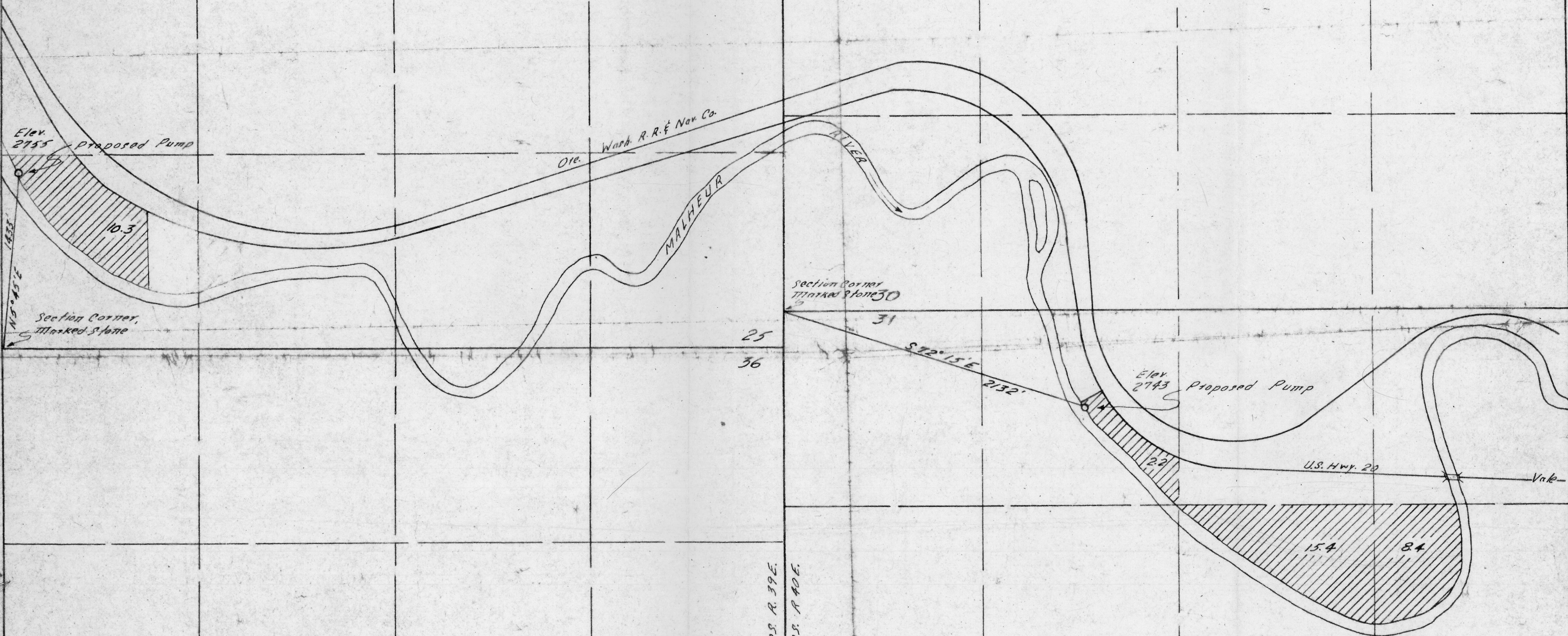
Scale: 1" = 600'

PROPOSED ACERAGE & POINTS OF DIVERSION



25

30



Elev. 2755 Proposed Pump
 10.3
 Section Corner, Marked Stone
 N 15° 45' E
 1453'

01e. Wash R.R. & Nav. Co.

Section Corner
 Marked Stone 30

25
 36

31
 S 72° 15' E
 232'

Elev. 2743 Proposed Pump

U.S. Hwy. 20

Vak

15.4
 8.4

T. 20S. R. 39E.
 T. 20S. R. 40E.

36

31