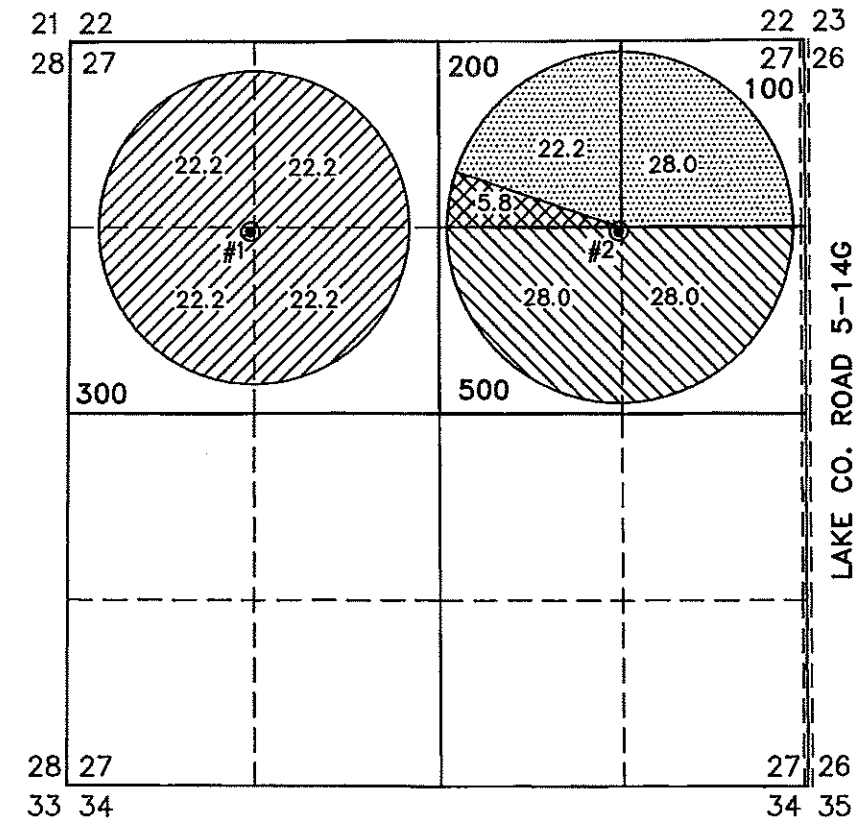
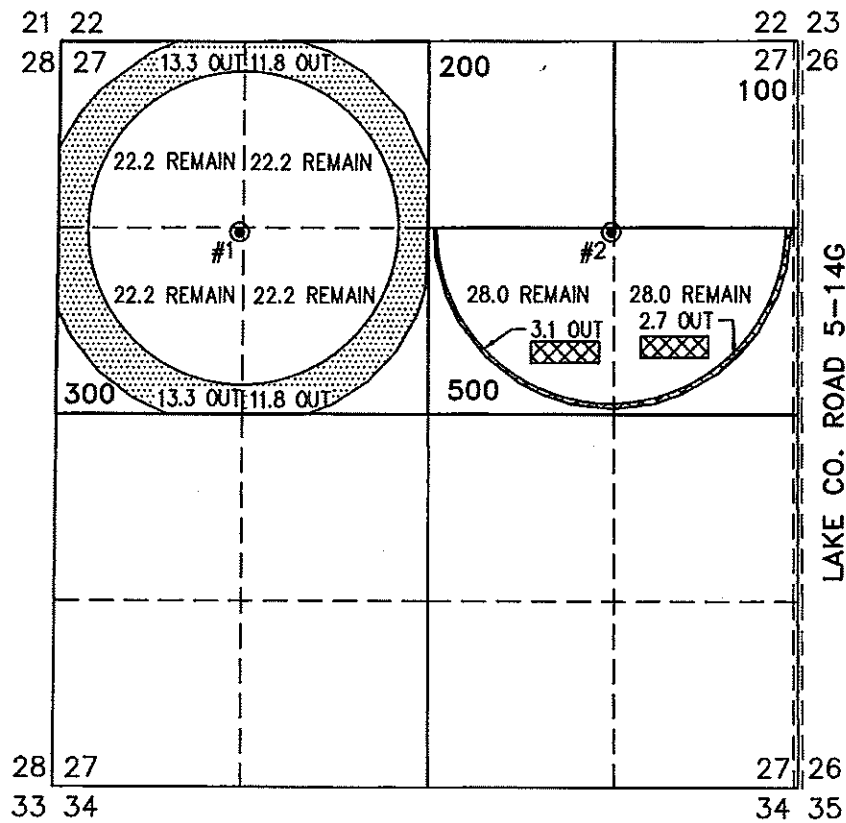


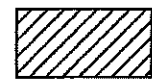
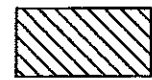
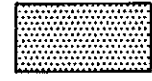

MAP TO ACCOMPANY APPLICATION  
TO CHANGE PLACE OF USE AND POINT OF  
APPROPRIATION  
FOR  
DOUBLE J RANCH, LLC

FROM  
TAX LOTS 100, 200, 300, & 500  
IN SECTION 27, TOWNSHIP 27 SOUTH, RANGE 16 EAST, W.M.  
LAKE COUNTY, OREGON

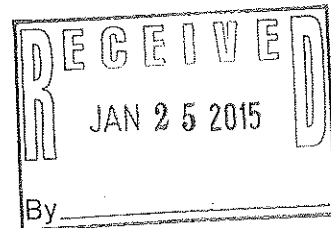
TO  
TAX LOTS 100, 200, 300, & 500  
IN SECTION 27  
TOWNSHIP 27 SOUTH, RANGE 16 EAST, W.M.  
LAKE COUNTY, OREGON



LAKE 908 G-8982  
● #1 WELL LOCATED IN THE SW 1/4 NW 1/4 AND 1350 FEET SOUTH AND 1350 FEET WEST FROM THE NORTH 1/4 CORNER OF SECTION 27.  
LAKE 50565 G-9018  
● #2 WELL LOCATED IN THE SW 1/4 NE 1/4 AND 1352.7 FEET SOUTH AND 1332.4 FEET WEST FROM THE NE CORNER OF SECTION 27.

-  88.8 ACRES WATER RIGHTS FROM C #52875 (G-8982) REMAIN, AS SHOWN.
-  56.0 ACRES WATER RIGHTS FROM C #76941 (G-9018) REMAIN, AS SHOWN.
-  50.2 ACRES WATER RIGHTS FROM C #52875 (G-8982) TRANSFERRED, AS SHOWN.
-  5.8 ACRES WATER RIGHTS FROM C #76941 (G-9018) TRANSFERRED, AS SHOWN.

THIS MAP IS FOR THE PURPOSE OF LOCATING A WATER RIGHT ONLY AND HAS NO INTENT TO PROVIDE LEGAL DIMENSIONS OR THE LOCATION OF PROPERTY LINES.



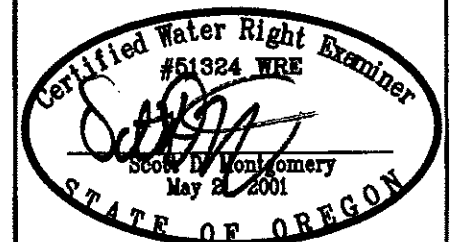
PROJECT No. 15-120

PREPARED AT THE REQUEST OF:  
DOUBLE J RANCH, LLC  
P.O. BOX 766  
CHRISTMAS VALLEY, OR 97641

ALL POINTS ENGINEERING  
& SURVEYING, INC.



P.O. BOX 767  
TERREBONNE, OREGON 97760  
(541) 548-5833 PH  
Scott@APEandS.com  
www.APEandS.com



RENEWAL DATE: 12/31/2016