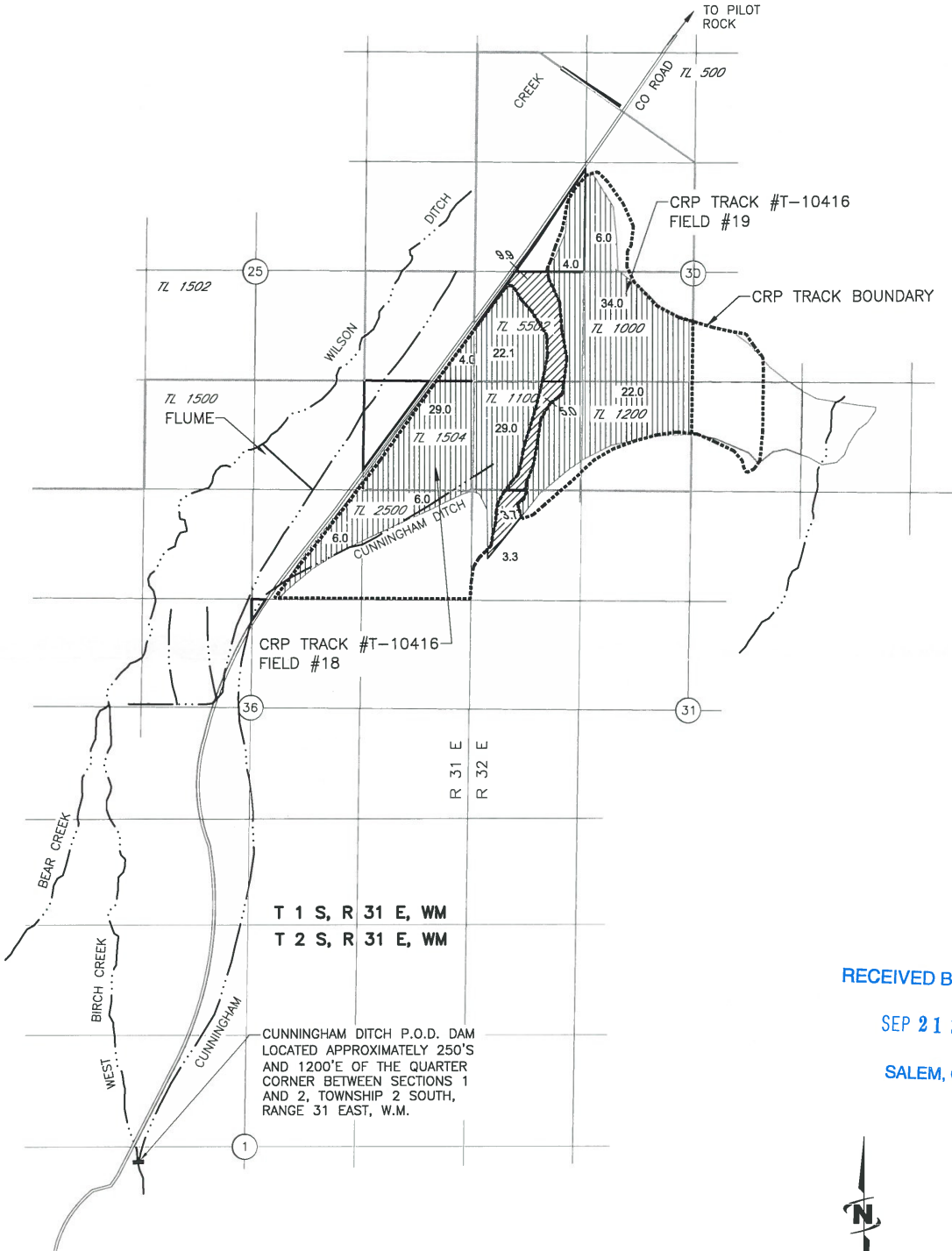




**CUNNINGHAM SHEEP WEST BIRCH CREEK RANCH  
IN STREAM APPLICATION MAP CERT 1928  
T1S, R31E & R32E W.M.**



**T 1 S, R 31 E, WM  
T 2 S, R 31 E, WM**

CUNNINGHAM DITCH P.O.D. DAM  
LOCATED APPROXIMATELY 250'S  
AND 1200'E OF THE QUARTER  
CORNER BETWEEN SECTIONS 1  
AND 2, TOWNSHIP 2 SOUTH,  
RANGE 31 EAST, W.M.

RECEIVED BY OWRD  
SEP 21 2015  
SALEM, OR

- CRP TRACK BOUNDARY
-  165.4 AC CERT 1928
-  18.6 AC OF THIS CERT NOT INVOLVED IN THIS INSTREAM TRANSFER

