

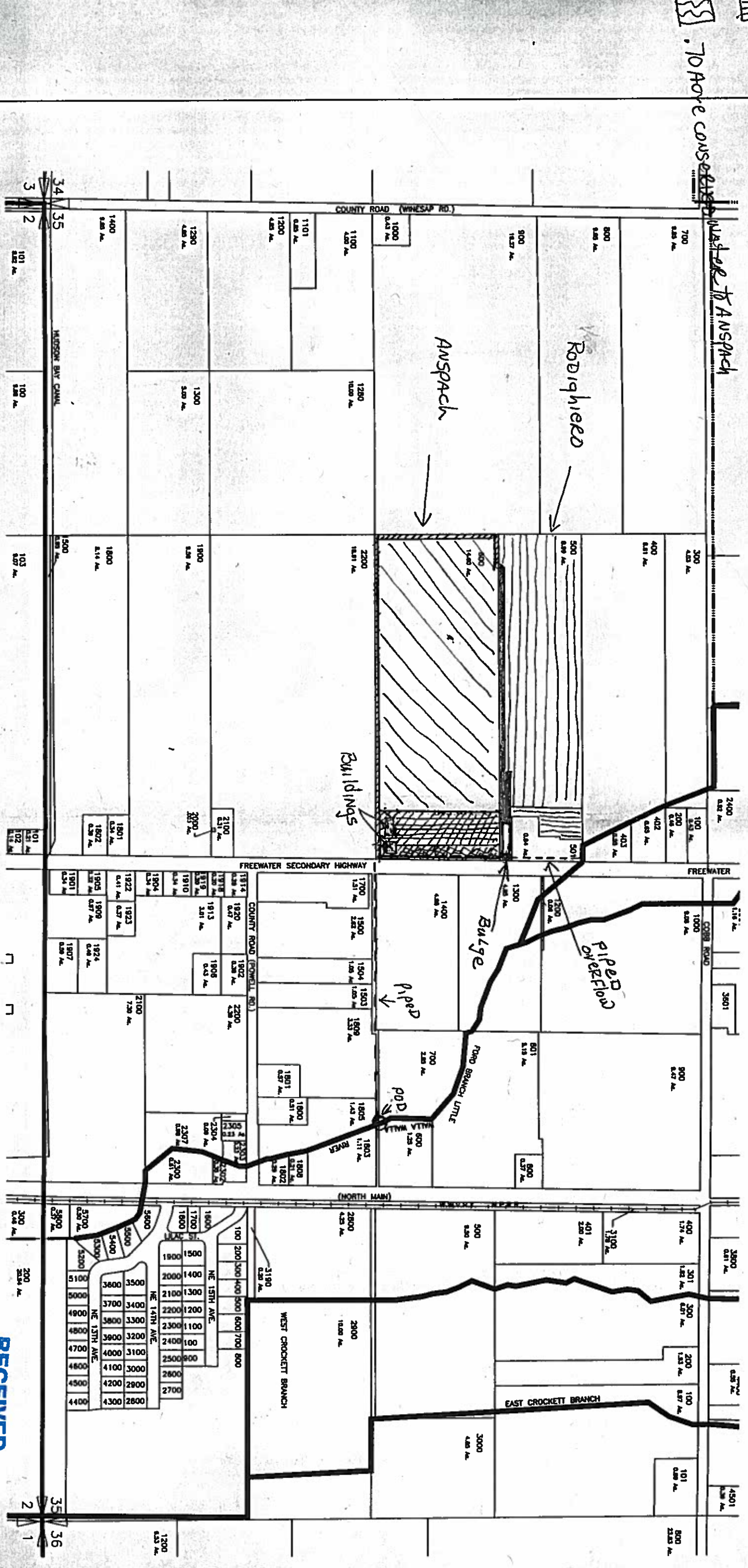
Rodriguez

NOT Irrigated, 72 Acres

Water Right cert. 12889, 1891, 8 Acres

77 Acres conserved water

SOUTH 1/2 SECTION 35 TOWNSHIP 6 NORTH, RANGE 35 EAST, W.M.



ANSPACK

- Water Right cert. 12519, 2.48 Acres of them sum (back to state)

- Water Right cert. 12518, 10 Acres & 1875; 12519 cert. 1 acre 1891 and 12519 cert. 1 acre 1901 Year Round

- Conserved water from 12 acre water rights (17.5 GPM) Year Round

151 70 Acres conserved water from

WALLA WALLA RIVER IRRIGATION DISTRICT

PIPED - - - - -

RECEIVED

APR 02 2001

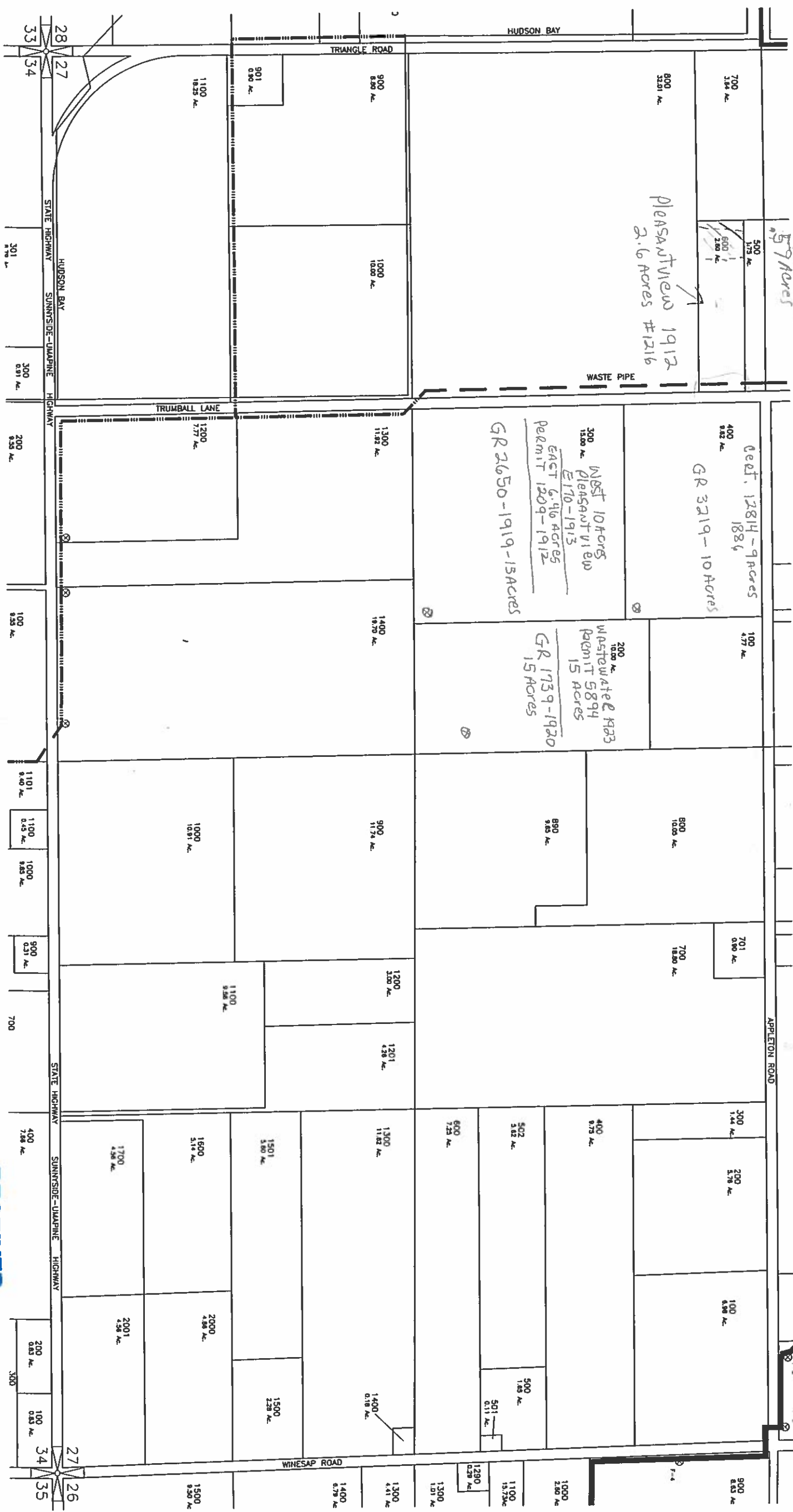
WATER RESOURCES UEP
SALEM, OREGON



DWG 355

SAM
CONSULTANTS, INC.
Architects & Engineers
Remond, WA 98238
4376.015 4376-355.DWG

SOUTH 1/2 SECTION 27 TOWNSHIP 6 NORTH, RANGE 35 EAST, W.M.



RECEIVED

APR 02 2001

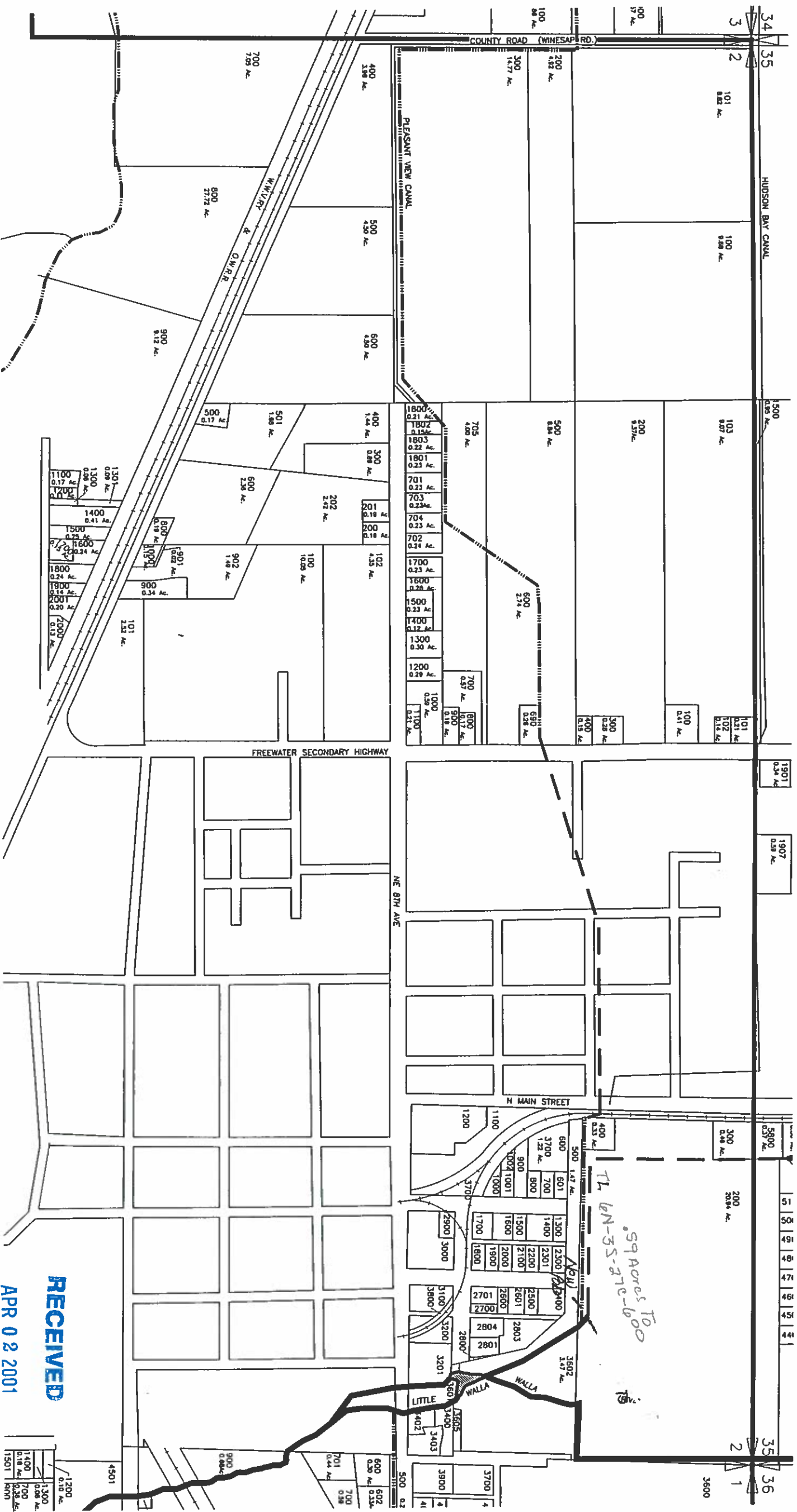
WATER RESOURCES DEPT
SALEM, OREGON

DWG 27S

WALLA WALLA RIVER IRRIGATION DISTRICT

SCM Consultants, Inc. Architects & Engineers
4376-015 4376-27S.DWG

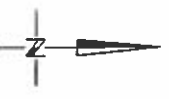
NORTH 1/2 SECTION 2 TOWNSHIP 5 NORTH, RANGE 35 EAST, W.M.



RECEIVED

APR 02 2001

WATER RESOURCES DEPT
SALEM, OREGON



DWG 2N

WALLA WALLA RIVER IRRIGATION DISTRICT

S&M

Consultants, Inc.
Architects & Engineers
Kennewick, WA 98536
4376-2N.DWG