



9 10  
16 15

T6S R1E

PROPERTY  
S BOUNDARY

Google earth

TOFT-KASER  
FARM, LLC

10/6/17

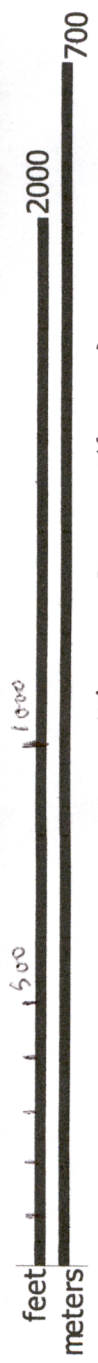
Raymond Kaser

A. POINT OF  
DIVERSION

B. BULGE  
PONDS

C. EXISTING  
IRRIGATION

D. NEW  
IRRIGATION



Google earth

RECEIVED

OCT 06 2017

OWRD

SECTION 15 T.6S. R.1E. W.M.

CLACKAMAS COUNTY

1" = 400'

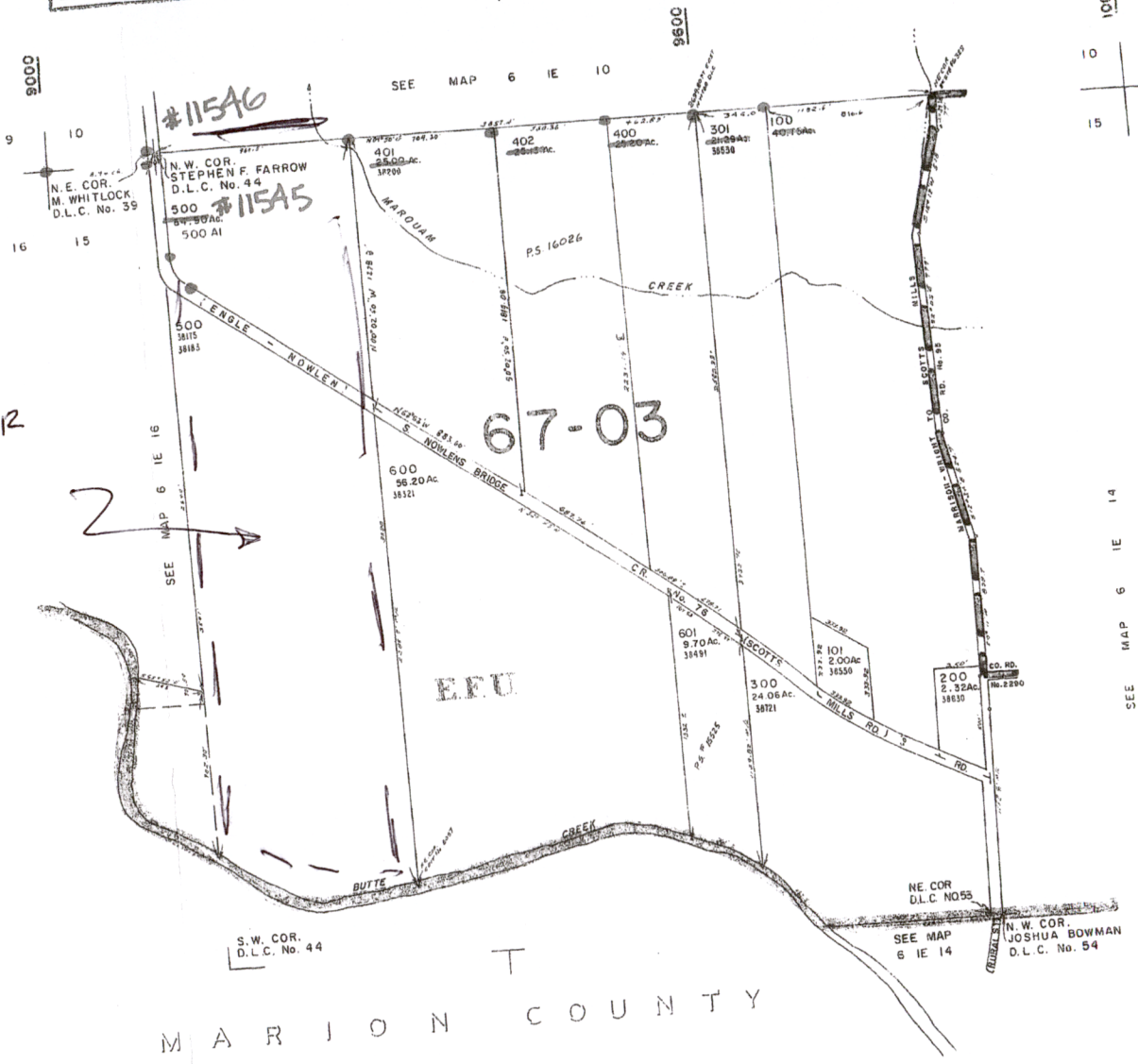
D.L.C.  
STEPHEN F FARROW NO. 44

6 1E 15

This map was prepared for  
assessment purpose only.

#11544

TOFT-KASER  
FARM, LLC



67-03

M A R I O N C O U N T Y

10000  
10 11  
15 14  
38000  
SEE MAP 6 1E 14  
38400

RECEIVED  
OCT 05 2017  
OWRD

16 15  
21 22  
S.E. COR.  
D.L.C. No. 391

15 14  
22 23  
39000  
6 1E 15  
BOOK 42